

# Nucleoporin Nup58 localizes to centrosomes and mid-bodies during mitosis

*by* Hartono Hartono

---

**Submission date:** 21-Jun-2023 01:09PM (UTC+0100)

**Submission ID:** 209265908

**File name:** 3.pdf (2.1M)

**Word count:** 6978

**Character count:** 38950

SHORT REPORT

Open Access

# Nucleoporin Nup58 localizes to centrosomes and mid-bodies during mitosis



Hartono<sup>1,2\*</sup>, Masaharu Hazawa<sup>3,4</sup>, Kee Siang Lim<sup>4</sup>, Firlil R. P. Dewi<sup>3,5</sup>, Akiko Kobayashi<sup>3</sup> and Richard W. Wong<sup>1,3,4\*</sup>

## Abstract

**Background:** Nuclear pore complexes (NPCs) act as nano-turnstiles within nuclear membranes between the cytoplasm and nucleus of mammalian cells. NPC proteins, called nucleoporins (Nups), mediate trafficking of proteins and RNA into and out of the nucleus, and are involved in a variety of mitotic processes. We previously reported that Nup62 localizes to the centrosome and mitotic spindle during mitosis, and plays a role in centrosome homeostasis. However, whether Nup58, a Nup62 subcomplex protein, also localizes to spindle poles is unknown.

**Result:** Herein, we show that Nup58 localizes to the nuclear rim during interphase, and to mitotic spindles, centrosomes, and midbodies during mitosis. Our confocal microscopy, live-cell imaging, and stimulated emission depletion nanoscopy results also demonstrated that Nup58 localized to the centrosomes during metaphase and relocalized to midbodies during abscission. Depletion of Nup58 resulted in centrosomal abnormalities and delayed abscission.

**Conclusion:** Nup58 localized at the centrosomes and mitotic spindle during metaphase and relocalized at midbodies during abscission. This study highlights the important role of Nup58 in mitosis.

**Keywords:** Nup58, Centrosome, Midbody, Mitosis, Cytokinesis

## Background

Nuclear pore complexes (NPCs) control trafficking of macromolecules between the cytoplasm and nucleus in interphase cells [1–3]. NPCs consist of approximately 30 proteins (called nucleoporins/Nups), which form a central nano-turnstile with filaments extending into both the nucleus and cytoplasm [4, 5]. Macromolecular transport across the pore occurs rapidly by an energy-dependent process. Nuclear trafficking pathways are regulated by an intracellular gradient of the small GTPase Ran, with a high concentration of RanGTP in the nucleus and high concentration of RanGDP in the cytoplasm. In addition to macromolecular trafficking, Nups also contribute to the control of gene expression, chromatin maintenance, and mitotic progression [6, 7]. Indeed, as mammalian cells enter mitosis, the nuclear envelope pulls apart during its breakdown process, which involves the disassembly of NPCs and nuclear lamina, as well as release

of the nuclear envelope membrane from chromatin [8, 9]. An increasing number of Nups have now been demonstrated to function at kinetochores, centrosomes, and spindles during mitosis [10–13]. NPC components are actively involved at various stage during mitosis. However, precise roles of individual Nups, both spatially and temporally, during cell cycle progression are still largely unknown (for review see: [14–17]). Using conventional confocal microscopy and live-cell imaging techniques, we previously demonstrated the mitotic functions [16] of nucleoporin Rae1 [18–21], Nup88 [22], Tpr [23–26], and Nup358 [27]; more recently, we also revealed that Nup62 plays a novel role in centrosome integrity during mitosis [28, 29].

Nup62 is a constituent of the Nup62 complex that also includes Nup58 and Nup54 [30, 31], which are anchored by Nup93 at the pore and are critical for NPC function [32]. Although Nup62 localizes to the centrosome during mitosis, little is known about the spatiotemporal localization and functions of Nup58 [33, 34]. Depletion of Nup58 by RNA interference (RNAi) has been shown to reduce viability of colorectal cancer cell lines (DLD1 and SW480) [35]. Moreover, knockdown of Nup58 by RNAi

\*Correspondence: hartono@unm.ac.id; rwong@staff.kanazawa-u.ac.jp

<sup>1</sup> School of Natural System, Institute of Natural Science and Technology, Kanazawa University, Kanazawa, Japan

Full list of author information is available at the end of the article



in MDCK cell lines elicited cell polarity defects [36]. Further, Nup58 also facilitates metastasis and epithelial-mesenchymal transition (EMT) of lung adenocarcinoma via the GSK-3 $\beta$ /Snail signaling pathway during interphase [37]. However, the functional consequences of Nup58 in the cell cycle of cancer cells remains unknown.

In this report, we address whether Nup58 plays a role in regulating cell cycle progression. We demonstrate that Nup58 localized to the centrosomes and midbody at the metaphase-telophase-cytokinesis transition during cell division. In addition, Nup58 depletion further influenced the abscission process, resulting in defective cytokinesis.

## Results

### Nup58 localized to mitotic spindles and spindle poles during mitosis

To further clarify specific roles of Nup58 during mitosis, we sought to investigate the detailed subcellular localization of Nup58 during the cell cycle in HeLa cells. We first synchronized HeLa cells using a double-thymidine block (Fig. 1a) and examined Nup58 localization during cell division. HeLa cells were coimmunostained for endogenous Nup58 and  $\alpha$ -tubulin. We observed dynamic localization of Nup58 within different mitotic and cytokinetic subcompartments. During interphase, Nup58 was present in the cytoplasm and on the nuclear envelope, thereby forming a typical nuclear rim pattern in HeLa cells (Fig. 1b). However, during prometaphase and metaphase, Nup58 gradually accumulated into spindle-like structures, which were identified by co-staining with an  $\alpha$ -tubulin antibody; Nup58 was also detectable at mitotic spindle poles or centrosomal regions during metaphase. As cells progressed into late telophase or cytokinesis, Nup58 was no longer detectable at the centrosome, but instead ephemerally localized at the midzone (Fig. 1b, Additional file 1: Fig. S1). Thus, our immunofluorescence data indicated that Nup58 has dynamic localization during the cell cycle and is associated with the cytokinesis apparatus during the late telophase-cytokinesis transition.

### Nup58 localized to centrosomes during the metaphase–anaphase transition

The metaphase observations described above led us to surmise that Nup58 contributes to centrosome assembly during cell division. Indeed, we showed that a fraction of Nup62, the *bona fide* binding partner of Nup58,

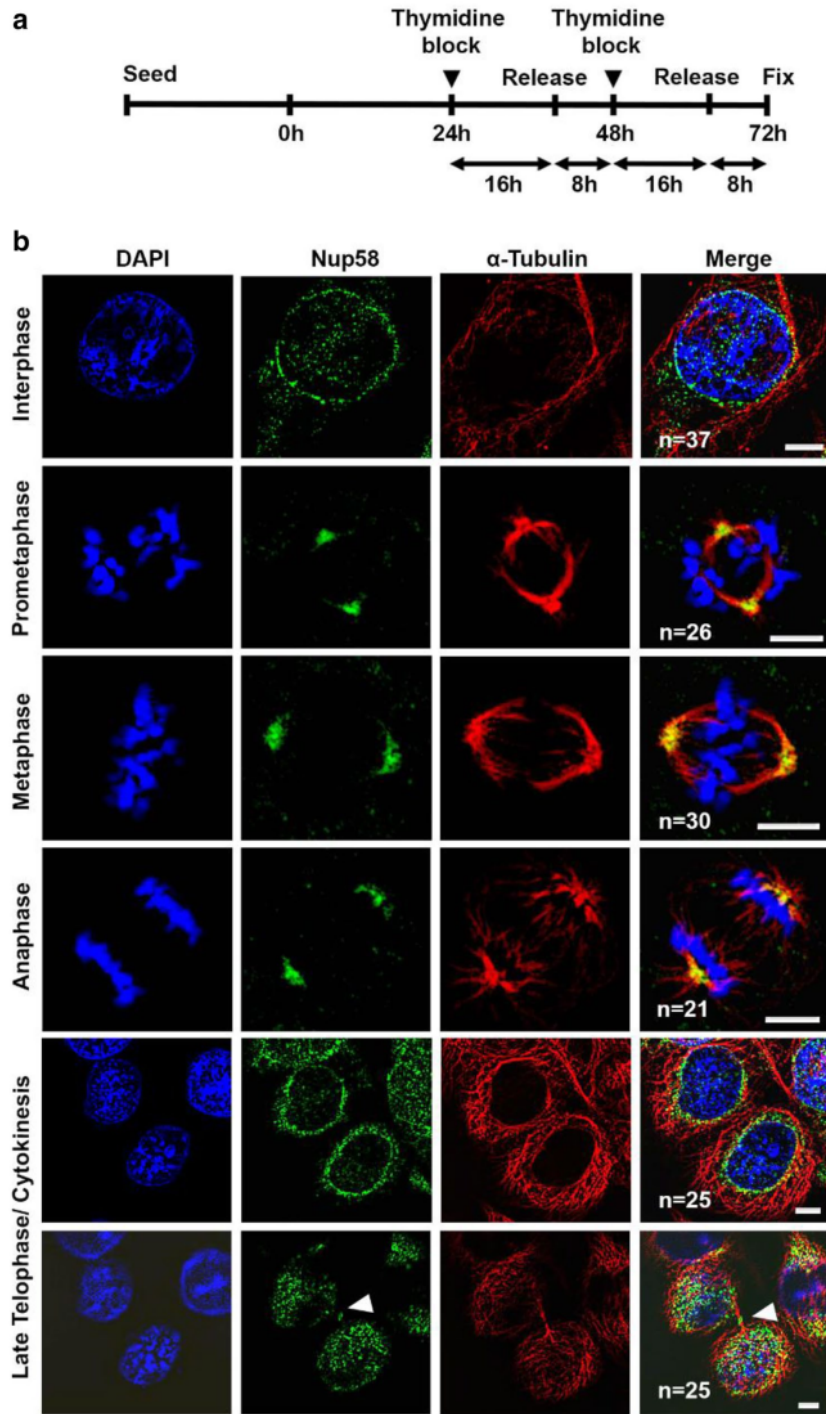
localized to centrosomes during mitosis [28]. To investigate whether Nup58 also localized to centrosomes, we used specific antibodies against centrosome markers Nup58,  $\gamma$ -tubulin, and SAS-6 to examine their localization at different cell cycle stages. Deconvoluted confocal imaging of HeLa cells indicated colocalization of Nup58, SAS-6, and  $\gamma$ -tubulin (Fig. 2a, b). Moreover, a series of maximum projections of the z-plane were captured to rule out potential staining artifacts (Additional file 1: Fig. S2a-c). Given the colocalization of Nup58 with  $\gamma$ -tubulin at the centrosome, we sought to investigate whether Nup58 physically interacts with centrosomal proteins. Thus, we next examined whether Nup58 was associated with centrosomal proteins in HeLa cells during interphase or mitosis. Using immunoblotting of anti-Nup58 immunoprecipitates, we detected coprecipitating  $\gamma$ -tubulin and SAS-6, but not the coiled-coil centrosomal protein ninein during mitosis (Fig. 2c). To confirm the binding specificity and sensitivity of Nup58 in our immunoprecipitation assay, we used ninein as negative control because it has a major role in microtubule minus-end anchorage and also acts as a docking site for  $\gamma$ -tubulin-containing complexes at centrosomes [38]. Similarly, Tpr, which acts as another negative control Nup, localized to the nuclear basket region [25]. Moreover, we found that Nup58 did not pull down any centrosomal proteins during interphase (Fig. 2d). These data suggest that Nup58, along with Nup62, interact with  $\gamma$ -tubulin and SAS-6 at the spindle pole/centrosome during mitosis. Thus, our staining data indicated that endogenous Nup58 localized at centrosomal regions during the metaphase–anaphase transition, although the biological function of the interaction between Nup58 and centrosome markers during cell division needs further exploration.

### Nup58 localized to the dark zone region of midbodies during telophase

We next isolated and purified midbody extracts and confirmed that Nup58 and Nup62 were indeed accumulated in the biochemical midbody fraction. Moreover, to confirm the specificity of fractionation, we blotted Tpr as a negative control and Aurora B,  $\alpha$ -tubulin,  $\gamma$ -tubulin, and KIF4 as positive controls (Fig. 3a). Midbody protein localization was further categorized into two main groups: bulge and dark zone-flanking regions (Fig. 3b). We compared Nup58 midbody localization by counterstaining for two different midbody marker proteins,

(See figure on next page.)

**Fig. 1** Localization of Nup58 on mitotic spindles during mitosis, as acquired with a confocal microscope. **a** Schedule of collecting mitotic HeLa cells for confocal microscopy imaging. **b** Deconvoluted confocal images of HeLa cells at different cell cycle stages. Green, anti-Nup58; red, anti- $\alpha$ -tubulin; blue, chromatin (DAPI). Scale bars, 5  $\mu$ m



(See figure on next page.)

**Fig. 2** Localization of Nup58 on the centrosome and its interaction with centrosome protein during cell division. **a, b** Deconvoluted confocal images of HeLa cells at different stages in the cell cycle. Green, anti-Nup58; red, anti- $\gamma$ -tubulin (**a**) or anti-SAS-6 (**b**); blue, chromatin (DAPI). Scale bars, 5  $\mu$ m. **c, d** Immunoprecipitation of HeLa cell extracts with nonspecific rabbit antibodies (IgG) or anti-Nup58, as analyzed by SDS-PAGE and immunoblotting with antibodies against Nup58, Nup62,  $\gamma$ -tubulin, SAS-6, ninein, and Tpr during mitosis (**c**) and interphase (**d**)

such as  $\gamma$ -tubulin (bulge protein marker) and KIF4 (dark zone protein marker) (Fig. 3b, Additional file 1: Fig. S1). To further refine and validate Nup58 midbody localization, we performed stimulated emission depletion (STED) nanoscopy. We co-stained for Nup58 and KIF4 in mitotic HeLa cells and found that KIF4 associated with Nup58 at midbodies, consistent with immunofluorescence results. In addition, our STED data also revealed that mitotic Nup58 completely colocalized with KIF4 at the dark zone-flanking region, but not at the bulge (with  $\gamma$ -tubulin) at midbodies during cytokinesis (Fig. 3c–f). Altogether, during the telophase-cytokinesis transition, Nup58 signal was detected in two disks on either side of the midbody. These data suggest that Nup58 first associates with the centrosome in metaphase, and remains accumulated at the finest portions surrounding the dark-flanking zone in the midbody during abscission.

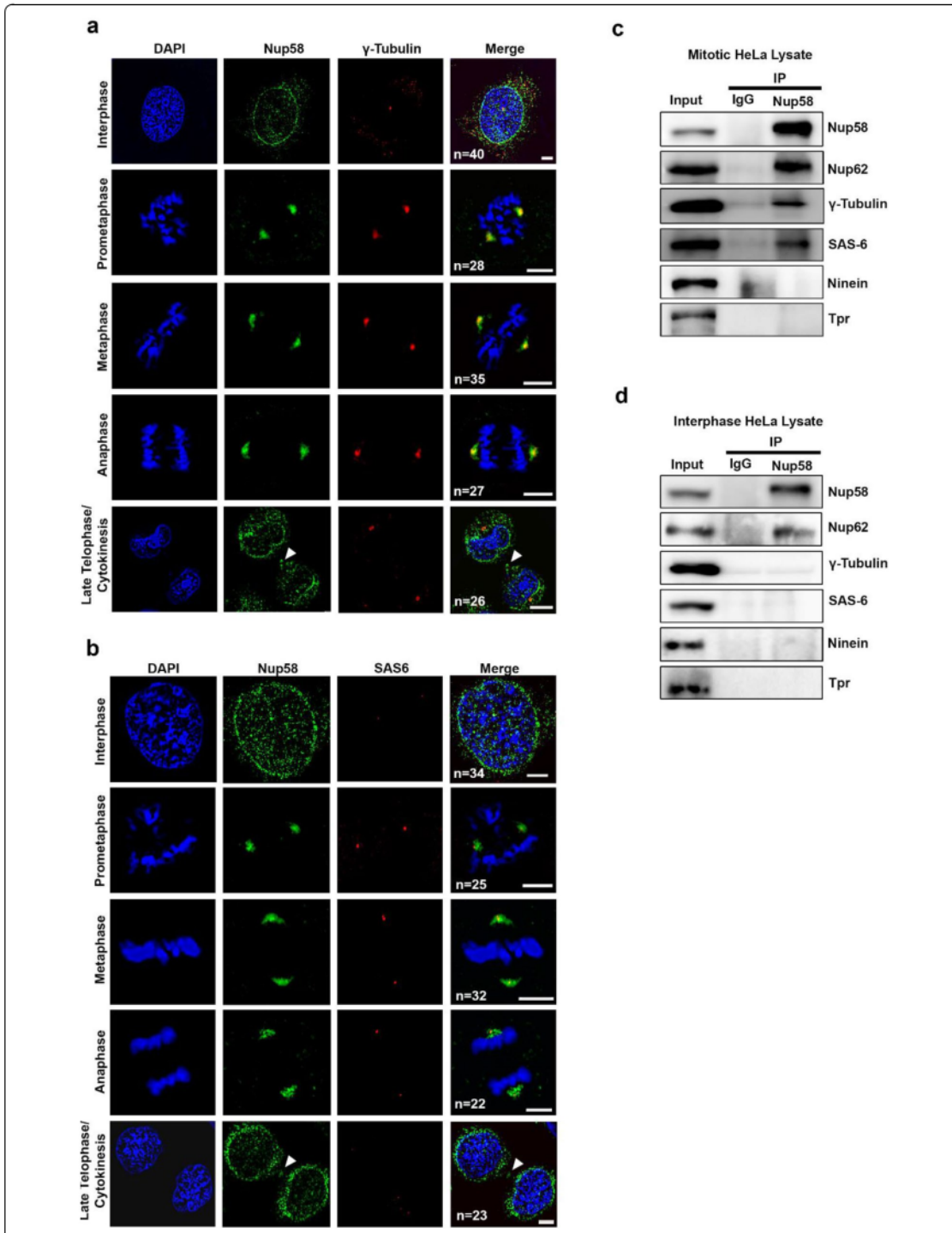
#### Nup58 relocated to the midbody during telophase

To prevent non-specificity in the expression pattern established using a Nup58 antibody and further ratify the centrosomal or midbody-like localization of Nup58 during mitosis, we performed real-time live imaging of Nup58. An N-terminal green fluorescent protein (GFP)-tagged Nup58 was generated to detect expression of the GFP-tag (Fig. 4a). Live-cell imaging analysis was used to determine Nup58-GFP cell cycle localization. A representative series from time-lapse images of GFP-Nup58 during interphase–anaphase transitions is shown in Additional file 2: Video 1. We observed a GFP-Nup58 staining pattern around the nuclear rim during interphase, and then at the centrosome during metaphase, which dynamically relocated back to the newly developed chromatin boundary during late anaphase (Additional file 2: Video 1). Consistent with immunofluorescence data (Figs. 1, 2 and 3, Additional file 1: Fig. S1), we also found that some GFP-Nup58 partially localized to midbody regions during late telophase and cytokinesis (Fig. 4b, c; Additional files 4, 5: Video 3a, 3b). Notably, with live-cell imaging, we found that Nup58-GFP signals were obviously detectable at the midbody, where they remained until the abscission process finished [Fig. 4c (red arrowheads) and Additional files 4, 5: Video 3a, 3b] compared with GFP vector alone (Fig. 4b, Additional file 3: Video 2). Thus, our live-cell imaging data suggest that, in addition to its well-defined nuclear

envelope localization, Nup58 also partially relocates at the centrosome during metaphase and midbody during abscission.

#### Nup58 depletion triggered centrosomal abnormalities and delayed abscission

To further analyze the mitotic role of Nup58, we used a Nup58 siRNA-knockdown approach (Fig. 5a). Immunoblotting analysis of HeLa cells subjected to Nup58 siRNA treatment for 3 days revealed ~77% reduction in Nup58 compared with controls (Fig. 5b, Additional file 1: Fig. S3). Moreover, there were no significant changes in  $\gamma$ -tubulin levels. Notably, Nup62 and SAS-6 levels were reduced compared with mock-treated (control siRNA) cells (Fig. 5b). Moreover, we did not observe significant changes in mRNA levels of Nup62 or SAS-6 by qPCR, apart from potential Nup58 siRNA off-target effects (Fig. 5c). To confirm that mitotic phenotypes were specific to Nup58 and not a secondary effect arising from other problems with nuclear transport, we also examined the level of importin- $\beta$ , a major protein in nuclear transport, in cytoplasmic and nuclear fractions of Nup58-knockdown cells and controls. Our results revealed that there was no significant difference in protein levels in either cell type (Additional file 1: Fig. S4). This result is in line with a study by Rodriguez-Berriguete et al. [39] reporting that knockdown of Nup58 does not impair nuclear import. Furthermore, we found that centrosomal abnormalities were increased three-fold compared with control siRNA mitotic cells ( $n=500$  mitotic cells). In contrast with centrosomal abnormalities induced by Nup62 knockdown, which mostly involve the formation of multipolar spindles [28], Nup58 depletion induced monopolar spindles including spindles with poorly separated poles (34.96% vs. 7.93%;  $p<0.0001$ ; Fig. 5d). Moreover, compared with the staining pattern in control siRNA cells, downregulation of Nup58 also induced a marked ~25% increase in the formation of monopolar spindle (co-staining with  $\gamma$ -tubulin, as a centrosome marker,  $n=500$  mitotic cells) (Fig. 5d, e). Next, we analyzed cytokinesis in Nup58-depleted cells in detail. In fixed-cell images, siNup58-treated cells exhibited a considerably shifted distribution of midbody widths together with elongated and thin midbodies (Fig. 5f, g). Midbody maturation to abscission was also significantly slower when Nup58 was depleted (Fig. 5g,  $p<0.01$ ). On the basis



(See figure on next page.)

**Fig. 3** Colocalization of Nup58 with midbody protein markers. **a** Total cell extracts of interphase cells and extracts of purified midbodies were examined by immunoblotting with the indicated antibodies. **b** Categorization of midbody proteins according to localization on the midbody. **c, d** Deconvoluted confocal images of HeLa cells during stages of cytokinesis. **e, f** Super-resolution images of Nup58 and KIF4 acquired with confocal and STED microscopy, respectively. Green, anti-Nup58 ab; red, anti- $\gamma$ -tubulin (**c**) or anti-KIF4 (**d-f**). Line scans show the positions of proteins in relation to each other

of observed late-stage midbody defects, we further examined whether loss of Nup58 induced delays or failures in abscission by carrying out live-cell time-lapse imaging with siRNA-treated HeLa cells stably expressing GFP- $\alpha$ -tubulin. Figure 5h shows a typical example of time-lapse images of abscission collected via confocal microscopy (Fig. 5h, Additional file 6: Video 4). We recorded significant delays in the abscission process (> 180 min) in Nup58-depleted cells compared with control siRNA mitotic cells (~70 min; Fig. 5h, Additional file 6: Video 4). Further, in response to Nup58 depletion, cell division was halted primarily in metaphase, and those Nup58-depleted monopolar spindle cells exhibited severe mitotic catastrophe and cell death (Additional file 7: Video 5).

## Discussion

In recent years, Nups have been shown to perform a great variety of alternative functions, many of which are apparently unrelated to nuclear transport [2, 4, 7]. Herein, we found evidence for an additional role of Nup58, a NPC member required for nuclear pore biogenesis [3], in cytokinesis; namely, temporal regulation of telophase, cytokinesis, and abscission. Using live-cell imaging and STED nanoscopy, we revealed that Nup58 transiently localized to the centrosomes (Additional file 2: Video 1) and midbody (Additional file 4, 5: Video 3a, 3b), and was especially enriched near the midbody core and around dark zone/flanking regions; these patterns are distinct from other Nups.

Indeed, during cytokinesis, contraction of the actomyosin ring alters the cellular cortex to form a cleavage furrow and midbody, which serves as a platform for the gathering of the abscission apparatus that governs the final separation of daughter cells [40]. The midbody, initially described by Walther Flemming in the 19th century, forms from the midzone—a bipolar microtubule array that assembles between separating sister chromatids during anaphase [41]. Recently, it has become clear that the midbody acts as a polarity cue during spindle orientation, asymmetric cell division, and cell polarization by orchestrating vesicular transport, cytoskeletal organization, and localized cortical cues [41–44].

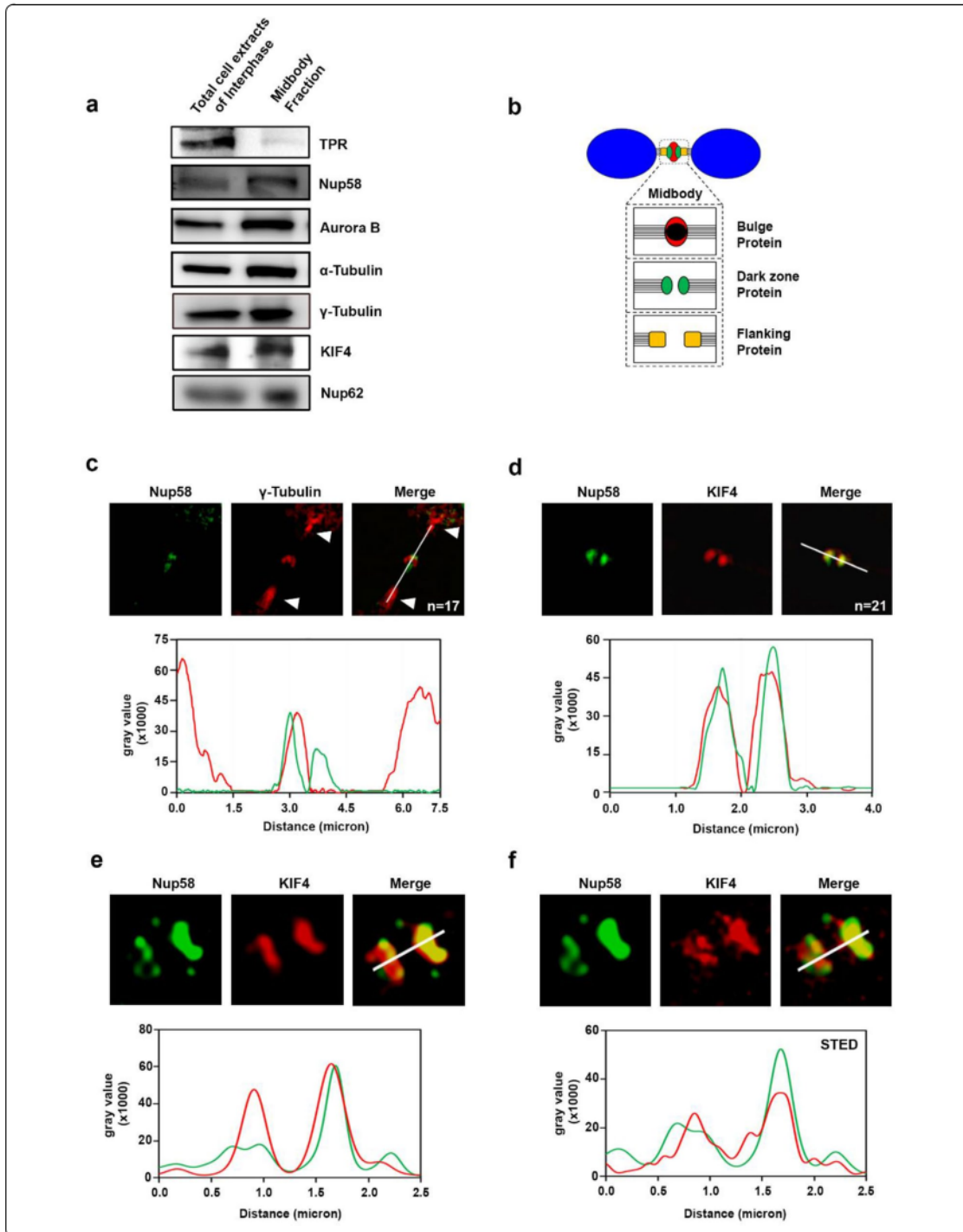
Although the overall program of cytokinesis is well-documented, many questions remain, particularly at the molecular level, in part because of the high spatiotemporal complexity of cytokinesis accompanied by conditions

for significant force during cleavage [40, 45, 46]. We demonstrated here that Nup58 depletion changed midbody widths. This may arise from the role of Nup58 in bundling and anchoring microtubules at the center of the midzone. Our finding that Nup58 depletion induces cells to be stuck in abscission for hours also raises the idea that Nup58 may contribute to effectual abscission during cytokinesis.

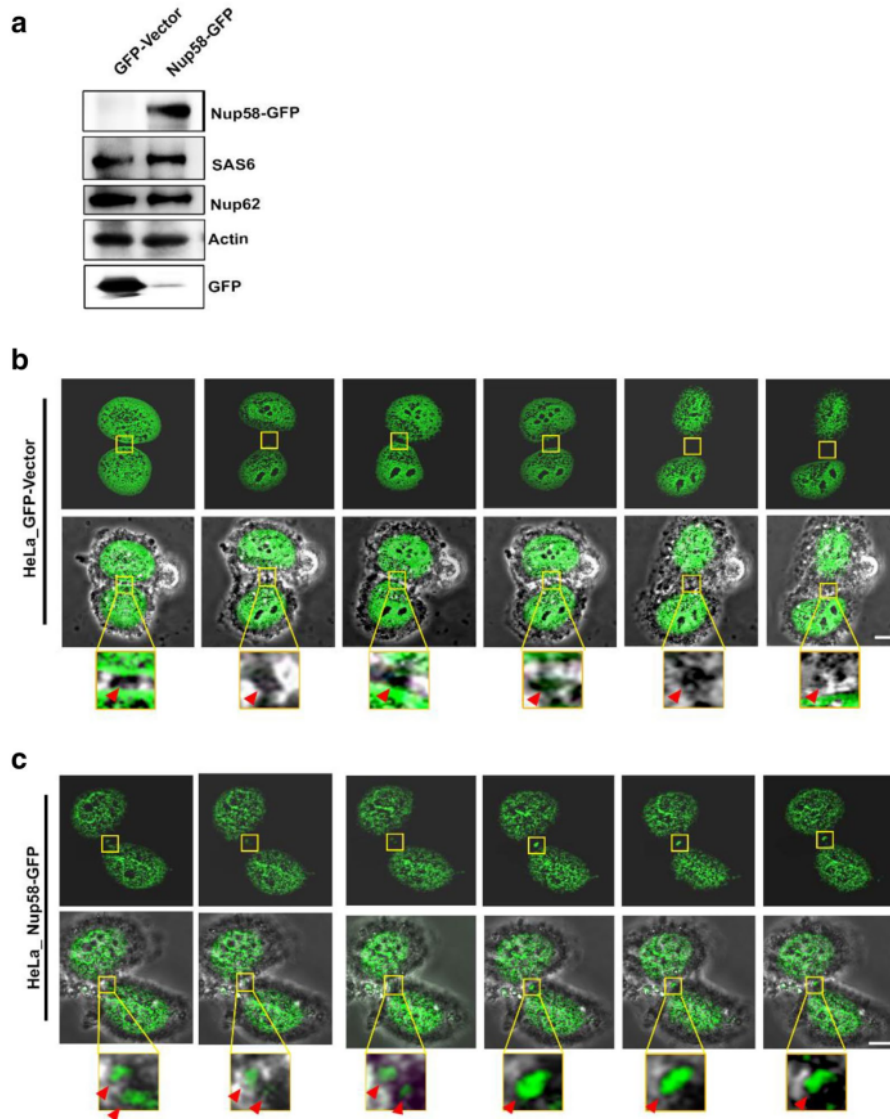
Previously, we reported that Nup62 knockdown induced significantly higher numbers of multipolar spindles compared with controls [28]. In contrast, our present study revealed that Nup58 depletion primarily enhanced monopolar spindle formation. Our live-cell imaging also revealed that Nup58-depleted monopolar spindle cells induce mitotic catastrophe, aneuploidy, and eventually cell death; as these delayed processes (~300 min) happened before cytokinesis, midbody formations were often not found (Fig. 5d, e, Additional file 7: Video 5). In mammals, aneuploidy has been linked to cancer progression, which, like cancer development, is a complex process involving functional and genetic abnormalities [27]. Moreover, Nup58 aids metastasis and EMT in lung cancer [37].

Another attractive option is that Nup58 stabilizes microtubules in a specific arrangement to enable the formation of dark zone and/or flanking regions with other midbody proteins (such as KIF4, PLK1, or ESCRT). In a previous study, we reported that Nup62 localized on the mitotic spindles and centrosomes during cell division [28]. In line with this observation, the centrosome has been shown to contribute to abscission and many centrosomal proteins have been found to localize to the midbody ring. Indeed, Nup62 also transiently localizes to the midbody ring at the end of abscission, whereby it interacts with the filamentous actin-capping protein CapG [47]. This study is consistent with our result (Fig. 3a).

Assuming that such a Nup58-Nup62-Nup54 protein subcomplex is required for the correct progression of cytokinesis, then a missing partner might dissolve the complex and result in cytokinetic defects, as observed with Nup58 depletion (Fig. 5h, Additional file 6: Video 4). Given this perspective, we postulate that Nup54 may also localize to centrosomes or midbodies during mitosis. Several organelles, such as the mitotic spindle, centrosome, and midbody, use microtubules as a structural constituent. Interactions







**Fig. 4** Localization of Nup58 on the midbody during cytokinesis. **a** Cell lysates of HeLa cells transfected with Nup58–GFP expression plasmid or GFP-vector were analyzed by immunoblotting for GFP or Nup58–GFP. **b** Live-cell images of GFP-vector-expressing HeLa cells during cytokinesis from midbody maturation to final abscission (Additional file 3: Video 2). **c** Live-cell images of Nup58–GFP-expressing HeLa cells during cytokinesis from midbody maturation to final abscission showing localization of Nup58 on the midbody. Insets are magnifications of midbody areas in observed cells (Additional files 4, 5: Video 3a, 3b). Arrowheads indicate HeLa cell midbodies during cytokinesis. Scale bars, 5  $\mu$ m

between microtubule-dependent organelles and the actin cytoskeleton can be categorized as regulatory or structural [47]. However, the nature of regulatory effects elicited by Nup58 and Nup62 on centrosomes

and midbodies is complex, and remains to be resolved in future studies. Indeed, future experiments should also examine the detailed interplay between molecular mechanisms of Nup58, Nup62, Nup54, and other mid-body protein interactions.

(See figure on next page.)

**Fig. 5** Nup58 depletion induced centrosomal abnormalities and delayed cytokinesis. **a** Brief agenda of collecting cells after Nup58 knockdown via siRNA transfection. **b** HeLa cells were transfected with control or Nup58 siRNA, then cell lysates were collected 72 h after transfection and analyzed by immunoblot of Nup58, Nup62, SAS-6,  $\gamma$ -tubulin, and  $\beta$ -actin expression. **c** qRT-PCR analysis of Nup58, Nup62, and SAS-6 mRNA in HeLa cells after transfection with siRNA Nup58 for 72 h. Data show mean  $\pm$  SD of three separate experiments. Significance difference was assessed with a Student's t-test,  $**p < 0.01$ . **d** Quantification (relative %) of abnormal centrosome phenotypes in control or Nup58 siRNA-transfected HeLa cells. Values are based on three independent experiments ( $n = 500$  cells). Mean values  $\pm$  SD (error bars) are shown. Significance difference was assessed with a Student's t-test,  $****p < 0.0001$ . **e** Deconvoluted confocal images of synchronous HeLa cells, transfected with control or Nup58 siRNA, 72-h post-transfection. Green, anti-Nup58; red, anti- $\alpha$ -tubulin; blue, chromatin (DAPI). Scale bars, 5  $\mu$ m. White arrows indicate bipolar and monopolar spindles as centrosome abnormalities when Nup58 was completely depleted. **f** Deconvoluted confocal images of HeLa cells 72-h post-transfection with control or Nup58 siRNA. Green, anti-Nup58; red, anti-acetylated- $\gamma$ -tubulin; blue, chromatin (DAPI). Scale bars, 5  $\mu$ m. Insets are magnifications of the midbody areas in observed cells. **g** Midbody maturation to abscission time in cells transfected with Nup58 siRNA ( $n = 30$  cells) compared with control ( $n = 30$  cells). Mean values  $\pm$  SD (error bars) are shown, and significant differences were assessed with a Mann-Whitney U test,  $****p < 0.0001$ . **h** Confocal live-cell images of stable GFP- $\alpha$ -tubulin expression in HeLa cells transfected with Nup58 siRNA shows delayed cytokinesis expression compared with the control. Insets are magnifications of microtubules areas in observed cells (Additional file 6: Video 4). Arrowheads indicate microtubules abscission. Scale bars, 5  $\mu$ m

## Conclusions

We revealed the presence of Nup58 at the centrosome during metaphase and its localization in the midbody during cytokinesis. We propose that mitotic Nup58 localization favors abscission during cytokinesis.

## Methods

### Antibodies

Primary antibodies used for western blot analysis, immunostaining, and immunoprecipitation (IP) were as follows: anti-Nup58 (R36031, Atlas Antibodies, Bromma, Sweden), anti-SAS-6 (sc-82360, Santa Cruz Biotechnology, Dallas, TX, USA), anti- $\alpha$ -tubulin (T9026, clone DM1A, Sigma-Aldrich, St. Louis, MO, USA), anti- $\gamma$ -tubulin (T5326, clone GTU-88, Sigma-Aldrich), anti-KIF4 (K1765, clone 3E2, Sigma-Aldrich), anti-acetylated  $\alpha$ -tubulin (ab24610, clone 6-11B-1, Abcam, Cambridge, UK), anti-Nup62 (N1163, Sigma-Aldrich), anti-Tpr (sc-101294, Santa Cruz Biotechnology), anti-ninein (sc-376420, Santa Cruz Biotechnology), anti Aurora B (ab2254, Abcam), anti- $\beta$ -actin (sc-47778, Santa Cruz Biotechnology), and GFP tag polyclonal antibody (A11122, Thermofisher, Rockford, IL, USA). Secondary antibodies (Alexa Fluor- or rhodamine-conjugated) were from Molecular Probes (Life Technologies, Carlsbad, CA, USA).

### Cell culture

HeLa cells were obtained from American Type Culture Collection (Manassas, VA, USA). Cell lines were propagated in Dulbecco's Modified Eagle's Medium (Nacalai Tesque, Kyoto, Japan) supplemented with 10% (v/v) fetal bovine serum (Life Technologies) and 50 U/ml penicillin-streptomycin (Nacalai Tesque). HeLa cells were maintained in a humidified incubator at 37 °C with 5% CO<sub>2</sub> [23]. The HeLa EGFP- $\alpha$ -tubulin cell line, used in live cell imaging, was generated by transfection of

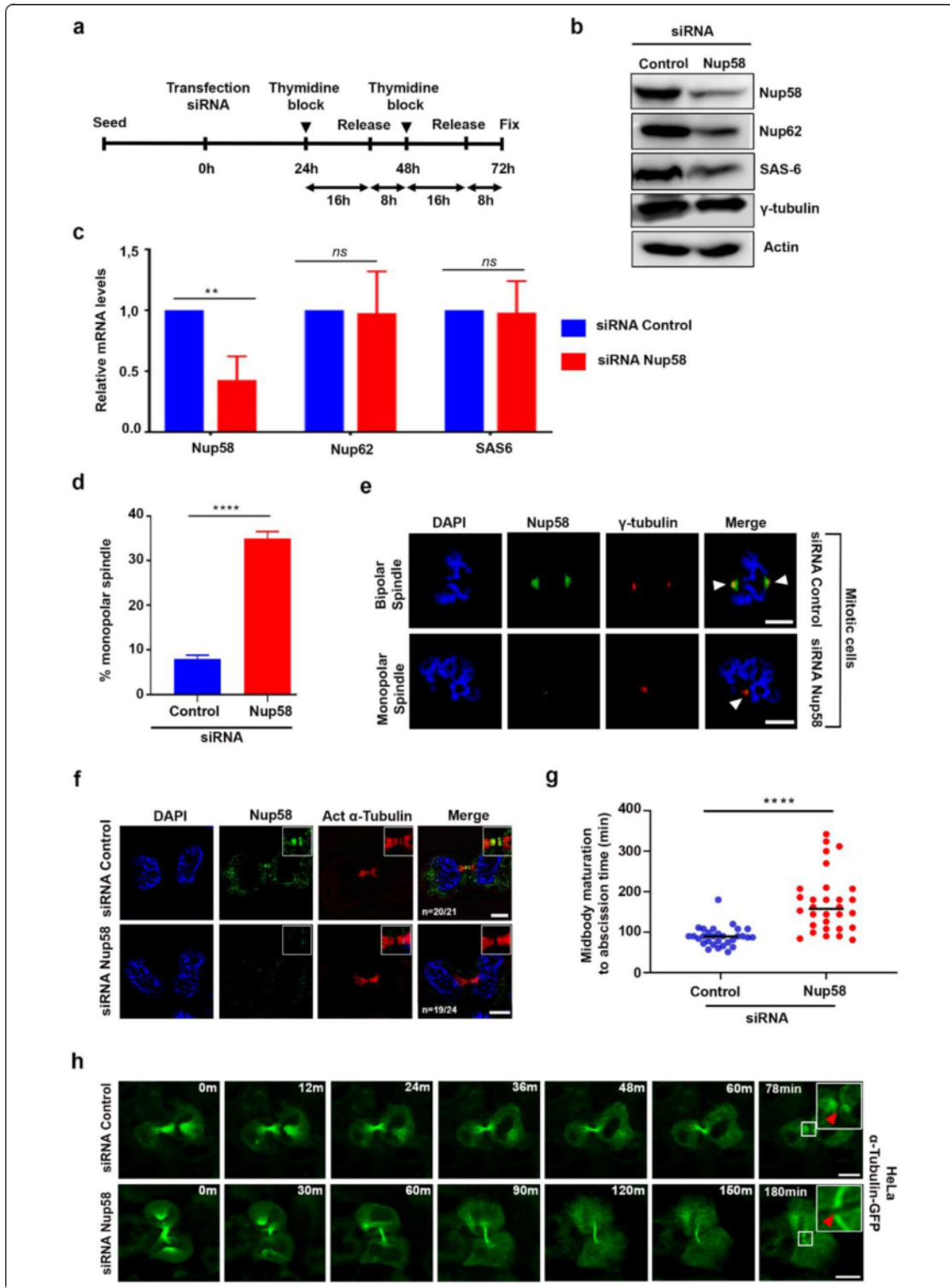
EGFP- $\alpha$ -tubulin cDNA to HeLa cells and maintained in G418 (600  $\mu$ g/ml).

### Immunostaining

Procedures used for immunostaining was described previously [23]. Briefly, M-phase-synchronized HeLa cells cultured on coverslips were washed in phosphate-buffered saline (PBS) and fixed for 10 min in ice-cold methanol absolute. Cells were then permeabilized with 0.3% Triton X-100 in phosphate-buffered saline for 10 min at room temperature. After incubation with primary and secondary antibody, samples were mounted onto coverslips with ProLong Gold Antifade reagent (Invitrogen) and were examined on an Olympus FV10i-LIV laser-scanning confocal microscope with a 60 $\times$  PlanApo/1.45NA DIC objective (Olympus, Tokyo, Japan).

### Immunoprecipitation

Procedures used for IP and western blotting were previously described [23, 26]. Briefly, Mitotic HeLa cells were collected, washed with PBS, spun at 400 $\times$ g for 10 min, and lysed in 1 ml of cold lysis buffer (50 mM Tris-HCl (pH 7.2), 250 mM NaCl, 0.1% Nonidet P-40, 2 mM EDTA, 10% glycerol) containing 1 $\times$  protease inhibitor mixture (Roche Applied Science) and 1 mM phenylmethylsulfonyl fluoride. Lysates were centrifuged for 30 min at 4 °C at 14,000 $\times$ g. The resulting lysate supernatants were pre-cleared with 50  $\mu$ l of protein A/G bead slurry (Santa Cruz Biotechnology), mixed with 10  $\mu$ l of various antibodies as specified, and incubated for 1 h at 4 °C with rocking. The beads were then washed five times with 500  $\mu$ l of lysis buffer. After the last wash, 50  $\mu$ l of 1 $\times$  SDS-PAGE blue loading buffer (New England Biolabs) was added to the bead pellet before loading. Signals were detected with an enhanced chemiluminescence system (GE Healthcare, Chicago, IL) and quantified using a LAS-4000 image



analyzer (Fuji Film, Tokyo, Japan) according to the manufacturer's specifications.

#### Midbody isolation

Midbodies were isolated from HeLa cells as described previously [48, 49]. Briefly, HeLa cells were collected after synchronized by thymidine/nocodazole followed by mitotic shake-off. Midbodies were isolated in a buffer (2 mM PIPES, pH 6.9, 0.25% Triton X-100, and 20 µg/ml Taxol) supplemented with protease inhibitor mixture (Roche Applied Science). The final midbody pellet was chilled on ice, washed, and subjected to centrifugation through a cushion of 40% glycerol.

#### Plasmids, RNA interference, and transfection

An expression plasmid containing Nup58-GFP was generated by inserting 1800 bp of the Nup58 isoform A gene into the pEGFP-N1 vector (Takara, Kusatsu, Japan). The construct was confirmed by DNA sequencing (PRISM3100-AvantGenetic Analyzer, Applied Biosystems, Foster City, CA, USA). Small interfering (si)RNA duplexes targeting Nup58-specific siRNA (sc-75984) and control siRNA (sc-37007) were purchased from Santa Cruz Biotechnology. Procedures used for transfection was previously described [26].

#### Confocal live-cell imaging

Time-lapse analysis of Nup58 dynamics during the metaphase–cytokinesis transition in live cells was recorded from  $\alpha$ -tubulin-GFP-, Nup58-GFP- and GFP vector-expressing HeLa cells. Cells were placed into glass-bottomed dishes on the stage of an Olympus FV10i-LIV laser-scanning confocal microscope with a 60 $\times$  PlanApo/1.45NA DIC objective.

#### Confocal microscopy image processing

Confocal microscopy images were processed using CellSens (ver.2.1) software (Olympus) to produce deconvoluted confocal images, which were then converted to 16-bit images for processing with Adobe Photoshop CS6 and ImageJ software (imagej.nih.gov/ij/). Procedures used for immunostaining and image processing were previously described [50–52].

#### STED nanoscopy, image deconvolution, and analysis

For STED, cells were imaged with a 100 $\times$  NA 1.4 oil objective on a Leica SP8 gated STED microscope (Wetzlar, Germany). Alexa Fluor 488-labeled probes were excited with a 488-nm wavelength of pulsed white light (WL) using an 80-MHz laser and subsequently depleted with a CW 592-nm STED laser with a typical maximum power of 260–300 mW at the back aperture of the objective (corresponding to  $\sim$ 150 MW/cm<sup>2</sup> in the focal plane).

The settings optimized for a maximum gain in lateral resolution, corresponding to full laser depletion on an internal Leica GaAsP HyD hybrid detector with a time gate of  $1.5 \leq \text{tg} \leq 6.5$  ns.

Deconvolution of STED data was carried out using the STED module in Huygens Professional Deconvolution software (version 14.10; Scientific Volume Imaging, Hilversum, the Netherlands), which contains a theoretical estimation of the STED PSF based on values calculated from metadata of the acquired image. For deconvoluted images presented here, we used the calculated Huygens default deconvolution settings that were estimated from the metadata with the exception of a STED immunity fraction of 5%.

#### cDNA preparation and quantitative real-time RT-PCR assay

Procedures for cDNA preparation and qRT-PCR were performed as previously described [23, 29]. Total RNA was isolated using a NucleoSpin RNA isolation kit (Macherey–Nagel), and then 500 ng total RNA was used for cDNA preparation using a cDNA synthesis kit (ThermoScript RT-PCR system, Takara). Quantitative real time PCR (qPCR) was performed using a Thermal Cycler Dice Real Time System with SYBR Premix Ex Taq II (Takara). The primer sets were as follows: for Nup58, forward: 5'-CACAGCCATCTCTGGGAGTT-3' and reverse: 5'-GCCAAAGCCTGCACTAAGAC-3' for Nup62, forward: 5'-ACATCGATGCACAGCTCAAG-3' and reverse: 5'-ACTGCAGTGAGTCCATGTGC-3'; for SAS-6, forward: 5'-CGCAGGCTGTTTGAATGTA-3' and reverse: 5'-TGTATGTGACGCCCATTCAT-3'; for GAPDH, forward: 5'-GTCAGTGGTGGACCTGACCT-3' and reverse: 5'-AGGGTTCTACATGGCAA CTG-3'. Relative mRNA expression levels of target genes were calculated using *GAPDH* as an internal control.

#### Statistics

Statistical analyses were performed using Prism 7 (GraphPad Software, San Diego, CA, USA). Data are presented as mean  $\pm$  standard deviation (SD). Statistically significant differences in mean or median values between respective groups were tested by a Student's *t* test or a Mann–Whitney U test. *P* values < 0.05 with a confidence interval of 95% were considered to indicate a statistically significant difference.

#### Additional files

**Additional file 1: Figure S1.** Colocalization of Nup58 with midbody protein markers  $\gamma$ -tubulin (a) and KIF4 (b) acquired with confocal microscopy. **Figure S2.** z-plane confocal images of HeLa cells during metaphase and its maximum projections showing colocalization of Nup58 with midbody

protein markers  $\alpha$ -tubulin (a),  $\gamma$ -tubulin (b) and SAS-6 (c). **Figure S3.** Depletion of Nup58 in HeLa cells. HeLa cells were transfected with control or Nup58 siRNA, then cell lysates were collected 72 h after transfection, analyzed for knockdown efficiency by immunoblot of Nup58 and  $\beta$ -actin expression (upper panel) and for expression of Nup62 by confocal images (lower panel). Green, anti- $\gamma$ -tubulin; red, anti-Nup62; blue, chromatin (DAPI). Scale bars, 5  $\mu$ m. **Figure S4.** Expression of importin- $\beta$  after depletion of Nup58 in HeLa cells.

**Additional file 2: Video 1.** Localization of Nup58 on the centrosome in Nup58-GFP-expressing HeLa cells (right) during mitosis compared with GFP-vector-expressing HeLa cells (left) acquired with live-cell imaging

**Additional file 3: Video 2.** Live-cell imaging of GFP-vector-expressing HeLa cells during cytokinesis from midbody maturation to final abscission.

**Additional file 4: Video 3a.** Localization of Nup58 on the midbody in Nup58-GFP-expressing HeLa cells during cytokinesis from midbody maturation to final abscission acquired with live-cell imaging.

**Additional file 5: Video 3b.** Magnification of Nup58-GFP-expressing HeLa cells from video 3a. The inset shows enlarged detail of midbody areas in observed cells. Arrowheads indicate HeLa cell midbodies during cytokinesis.

**Additional file 6: Video 4.** Delayed cytokinesis of Nup58 siRNA transfected GFP- $\alpha$ -tubulin expressing HeLa cells (right) compared with the control (left) acquired with live-cell imaging.

**Additional file 7: Video 5.** A halt in cell division of Nup58 siRNA transfected GFP- $\alpha$ -tubulin expressing HeLa cells (right) compared with the control (left) acquired with live-cell imaging.

#### Acknowledgements

We are grateful to Dini Kurnia Iklipikawati for technical assistance. We also thank all our colleagues for sharing their reagents. We thank Edanz Group for editing a revision manuscript.

#### Authors' contributions

RW designed the study, wrote the manuscript. H and MH performed the experiments and prepared figures. KL, FRPD and AK analyzed the data. All authors read and approved the final manuscript.

#### Funding

Research was funded by the Grant from the MEXT/JSPS KAKENHI Grant Number 17H05874, 17K08655 (to R.W.) from MEXT Japan, by Grants from the Kobayashi International Scholarship Foundation (to R.W.), the Shimadzu Science Foundation (to R. W.), and by Indonesia Endowment Fund for education (LPDP) and Ministry of Research, Technology and Higher Education of the Republic of Indonesia (BUDI-LN Scholarship) (to H).

12

#### Data availability

All data generated or analyzed during this study are included in the article (and its additional files).

40

#### Ethics approval and consent to participate

Not applicable.

#### Consent for publication

Not applicable.

7

#### Competing interests

The authors declare that they have no competing interests.

#### Author details

<sup>1</sup>School of Natural System, Institute of Natural Science and Technology, Kanazawa University, Kanazawa, Japan. <sup>2</sup>Biology Department, Faculty of Mathematics and Natural Science, Universitas Negeri Makassar, Jl. Dg Tata Raya, Makassar 90224, Indonesia. <sup>3</sup>Cell-Bionomics Research Unit, INFINITI, Kanazawa University, Kanazawa, Japan. <sup>4</sup>WPI-Nano Life Science Institute, Kanazawa University, Kakuma-machi, Kanazawa, Japan. <sup>5</sup>Biology Department, Faculty of Science and Technology, University of Airlangga, Jl. Airlangga No. 2-4, Gubeng, Surabaya, East Java 60115, Indonesia.

44

Received: 1 April 2019 Accepted: 3 July 2019  
Published online: 03 August 2019

#### References

- Lim KS, Wong RW. Targeting nucleoporin POM121-importin beta axis in prostate cancer. *Cell Chem Biol*. 2018;25(9):1056–8.
- Wong RW, D'Angelo M. Linking nucleoporins, mitosis, and colon cancer. *Cell Chem Biol*. 2016;23(5):537–9.
- Beck M, Hurt E. The nuclear pore complex: understanding its function through structural insight. *Nat Rev Mol Cell Biol*. 2017;18(2):73–89.
- Wong RW, Mamede JI, Hope TJ. Impact of nucleoporin-mediated chromatin localization and nuclear architecture on HMV integration site selection. *J Virol*. 2015;89(19):9702–5.
- Sakuma S, D'Angelo MA. The roles of the nuclear pore complex in cellular dysfunction, aging and disease. *Semin Cell Dev Biol*. 2017;68:72–84.
- Wong RW. Nuclear pore complex: from structural view to chemical tools. *Chem Biol*. 2015;22(10):1285–7.
- Funasaka T, Wong RW. The role of nuclear pore complex in tumor micro-environment and metastasis. *Cancer Metasta Rev*. 2011;30(2):239–51.
- Dultz E, Zanin E, Wurzenberger C, Braun M, Rabut G, Sironi L, et al. Systematic kinetic analysis of mitotic dis- and reassembly of the nuclear pore in living cells. *J Cell Biol*. 2008;180(5):857–65.
- Martino L, Morchoisne-Bolhy S, Cheerambathur DK, Van Hove L, Dumont J, Joly N, et al. Channel nucleoporins recruit PLK-1 to nuclear pore complexes to direct nuclear envelope breakdown in *C. elegans*. *Dev Cell*. 2017;43(2):157–71 e7.
- Zuccolo M, Alves A, Galy V, Bolhy S, Formstecher E, Racine V, et al. The human Nup107-160 nuclear pore subcomplex contributes to proper kinetochore functions. *EMBO J*. 2007;26(7):1853–64.
- Linder MI, Kohler M, Boersema P, Weberruss M, Wandke C, Marino J, et al. Mitotic disassembly of nuclear pore complexes involves CDK1- and PLK1-mediated phosphorylation of key interconnecting nucleoporins. *Dev Cell*. 2017;43(2):141–56 e7.
- Lussi YC, Shumaker DK, Shimi T, Fahrenkrog B. The nucleoporin Nup153 affects spindle checkpoint activity due to an association with Mad1. *Nucleus*. 2010;1(1):71–84.
- Dawlaty MM, Malureanu L, Jeganathan KB, Kao E, Sustmann C, Tahk S, et al. Resolution of sister centromeres requires RanBP2-mediated SUMOylation of topoisomerase IIalpha. *Cell*. 2008;133(1):103–15.
- Mossaid I, Fahrenkrog B. Complex commingling: nucleoporins and the spindle assembly checkpoint. *Cells*. 2015;4(4):706–25.
- Chatel G, Fahrenkrog B. Dynamics and diverse functions of nuclear pore complex proteins. *Nucleus*. 2012;3(2):162–71.
- Nakano H, Wang W, Hashizume C, Funasaka T, Sato H, Wong RW. Unexpected role of nucleoporins in coordination of cell cycle progression. *Cell Cycle*. 2011;10(3):425–33.
- Hazawa M, Kobayashi A, Wong RW. NPCs in mitosis and chromosome segregation. Springer 2018 Book Chap. 10, p 219–240. ISBN 978-3-319-71612-1
- Wong RW, Blobel G. Cohesin subunit SMC1 associates with mitotic microtubules at the spindle pole. *Proc Natl Acad Sci USA*. 2008;105(40):15441–5.
- Wong RW, Blobel G, Coutavas E. Rae1 interaction with NuMA is required for bipolar spindle formation. *Proc Natl Acad Sci USA*. 2006;103(52):19783–7.
- Wong RW. Interaction between Rae1 and cohesin subunit SMC1 is required for proper spindle formation. *Cell Cycle*. 2010;9(1):198–200.
- Funasaka T, Nakano H, Wu Y, Hashizume C, Gu L, Nakamura T, et al. RNA export factor RAE1 contributes to NUP98-HOXA9-mediated leukemogenesis. *Cell Cycle*. 2011;10(9):1456–67.
- Hashizume C, Nakano H, Yoshida K, Wong RW. Characterization of the role of the tumor marker Nup88 in mitosis. *Mol Cancer*. 2010;9:119.
- Dewi FRP, Domoto T, Hazawa M, Kobayashi A, Douwaki T, Minamoto T, et al. Colorectal cancer cells require glycogen synthase kinase-3beta for sustaining mitosis via translocated promoter region (TPR)-dynein interaction. *Oncotarget*. 2018;9(17):13337–52.
- Kobayashi A, Hashizume C, Dowaki T, Wong RW. Therapeutic potential of mitotic interaction between the nucleoporin Tpr and aurora kinase A. *Cell Cycle*. 2015;14(9):1447–58.

25. Funasaka T, Tsuka E, Wong RW. Regulation of autophagy by nucleoporin Tpr. *Sci Rep*. 2012;2:878.
26. Nakano H, Funasaka T, Hashizume C, Wong RW. Nucleoporin translocated promoter region (Tpr) associates with dynein complex, preventing chromosome lagging formation during mitosis. *J Biol Chem*. 2010;285(14):10841–9.
27. Hashizume C, Kobayashi A, Wong RW. Down-modulation of nucleoporin RanBP2/Nup358 impaired chromosomal alignment and induced mitotic catastrophe. *Cell Death Dis*. 2013;4:e854.
28. Hashizume C, Moyori A, Kobayashi A, Yamakoshi N, Endo A, Wong RW. Nucleoporin Nup62 maintains centrosome homeostasis. *Cell Cycle*. 2013;12(24):3804–16.
29. Hazawa M, Lin DC, Kobayashi A, Jiang YY, Xu L, Dewi FRP, et al. ROCK-dependent phosphorylation of NUP62 regulates p63 nuclear transport and squamous cell carcinoma proliferation. *EMBO Rep*. 2018;19(1):73–88.
30. Guan T, Müller S, Klier G, Pante N, Blevitt JM, Haner M, et al. Structural analysis of the p62 complex, an assembly of O-linked glycoproteins that localizes near the central gated channel of the nuclear pore complex. *Mol Biol Cell*. 1995;6(11):591–603.
31. Kita K, Omata S, Horigome T. Purification and characterization of a nuclear pore glycoprotein complex containing p62. *J Biochem*. 1993;113(3):377–82.
32. Chug H, Trakhanov S, Hulsmann BB, Pleiner T, Gorlich D. Crystal structure of the metazoan Nup62<sup>\*</sup>Nup58<sup>\*</sup>Nup54 nucleoporin complex. *Science*. 2015;350(6256):106–10.
33. Melcak I, Hoelz A, Blobel G. Structure of Nup58/45 suggests flexible nuclear pore diameter by intermolecular sliding. *Science*. 2007;315(5819):1729–32.
34. Ulrich A, Partridge JR, Schwartz TU. The stoichiometry of the nucleoporin 62 subcomplex of the nuclear pore in solution. *Mol Biol Cell*. 2014;25(9):1484–92.
35. Camps J, Pitt JJ, Emons G, Hummon AB, Case CM, Grade M, et al. Genetic amplification of the NOTCH modulator LNX2 upregulates the WNT/beta-catenin pathway in colorectal cancer. *Cancer Res*. 2013;73(6):2003–13.
36. Li Y, Xu J, Xiong H, Ma Z, Wang Z, Kipreos ET, et al. Cancer driver candidate genes AVL9, DENND5A and NUPL1 contribute to MDCK cystogenesis. *Oncoscience*. 2014;1(12):854–65.
37. Shi J, Li C, Wang H, Xiao B, Qiu W. NUP58 facilitates metastasis and epithelial-mesenchymal transition of lung adenocarcinoma via the GSK-3beta/Snail signaling pathway. *Am J Transl Res*. 2019;11(1):393–405.
38. Moss DK, Bellett G, Carter JM, Liovic M, Keynton J, Prescott AR, et al. Ninein is released from the centrosome and moves bi-directionally along microtubules. *J Cell Sci*. 2007;120(Pt 17):3064–74.
39. Rodriguez-Berriguete G, Granata G, Puliyadi R, Tiwana G, Prevo R, Wilson RS, et al. Nucleoporin 54 contributes to homologous recombination repair and post-replicative DNA integrity. *Nucleic Acids Res*. 2018;46(15):7731–46.
40. Terry SJ, Dona F, Osenberg P, Carlton JG, Eggert US. Capping protein regulates actin dynamics during cytokinetic midbody maturation. *Proc Natl Acad Sci USA*. 2018;115(9):2138–43.
41. Johnson CA, Wright CE, Ghashghaei HT. Regulation of cytokinesis during corticogenesis: focus on the midbody. *FEBS Lett*. 2017;591(24):4009–26.
42. Pohl C. The midbody and its remnant in cell polarization and asymmetric cell division. *Results Probl Cell Differ*. 2017;61:165–82.
43. Mierzwa BE, Chiaruttini N, Redondo-Morata L, von Filseck JM, König J, Larios J, et al. Dynamic subunit turnover in ESCRT-III assemblies is regulated by Vps4 to mediate membrane remodelling during cytokinesis. *Nat Cell Biol*. 2017;19(7):787–98.
44. Tamir A, Elad N, Medalia O. Assembly and breakdown of microtubules within the midbody. *Commun Integr Biol*. 2011;4(5):552–3.
45. Pollard TD. Nine unanswered questions about cytokinesis. *J Cell Biol*. 2017;216(10):3007–16.
46. Janisch KM, McNeely KC, Dardick JM, Lim SH, Dwyer ND. Kinesin-6 KIF20B is required for efficient cytokinetic furrowing and timely abscission in human cells. *Mol Biol Cell*. 2018;29(2):166–79.
47. Hubert T, Vandekerckhove J, Gettemans J. Exo70-mediated recruitment of nucleoporin Nup62 at the leading edge of migrating cells is required for cell migration. *Traffic*. 2009;10(9):1257–71.
48. Bailey JK, Fields AT, Cheng K, Lee A, Wagenaar E, Lagrois R, et al. WD repeat-containing protein 5 (WDR5) localizes to the midbody and regulates abscission. *J Biol Chem*. 2015;290(14):8987–9001.
49. Kuriyama R, Keryer G, Borisy GG. The mitotic spindle of Chinese hamster ovary cells isolated in taxol-containing medium. *J Cell Sci*. 1984;66:265–75.
50. Mohamed MS, Kobayashi A, Taoka A, Watanabe-Nakayama T, Kikuchi Y, Hazawa M, et al. High-Speed Atomic Force Microscopy Reveals Loss of Nuclear Pore Resilience as a Dying Code in Colorectal Cancer Cells. *ACS Nano*. 2017;11(6):5567–78.
51. Funasaka T, Balan V, Raz A, Wong RW. Nucleoporin Nup98 mediates galectin-3 nuclear-cytoplasmic trafficking. *Biochem Biophys Res Commun*. 2013;434(1):155–61.
52. Wong RW, Setou M, Teng J, Takei Y, Hirokawa N. Overexpression of motor protein KIF17 enhances spatial and working memory in transgenic mice. *Proc Natl Acad Sci USA*. 2002;99(22):14500–5.

### Publisher's Note

Springer Nature remains neutral with regard to jurisdictional claims in published maps and institutional affiliations.

#### Ready to submit your research? Choose BMC and benefit from:

- fast, convenient online submission
- thorough peer review by experienced researchers in your field
- rapid publication on acceptance
- support for research data, including large and complex data types
- gold Open Access which fosters wider collaboration and increased citations
- maximum visibility for your research: over 100M website views per year

At BMC, research is always in progress.

Learn more [biomedcentral.com/submissions](https://biomedcentral.com/submissions)



# Nucleoporin Nup58 localizes to centrosomes and mid-bodies during mitosis

## ORIGINALITY REPORT

11%

SIMILARITY INDEX

5%

INTERNET SOURCES

8%

PUBLICATIONS

3%

STUDENT PAPERS

## PRIMARY SOURCES

1

[core-cms.prod.aop.cambridge.org](https://core-cms.prod.aop.cambridge.org)

Internet Source

<1%

2

Submitted to University of New Haven

Student Paper

<1%

3

[www.oncotarget.com](http://www.oncotarget.com)

Internet Source

<1%

4

Kerstin M. Janisch, Katrina C. McNeely, Joseph M. Dardick, Samuel H. Lim, Noelle D. Dwyer.

"Kinesin-6 KIF20B is required for efficient cytokinetic furrowing and timely abscission in human cells", Cold Spring Harbor Laboratory, 2017

Publication

<1%

5

Yuta Seki, Hiroshi Shitara, Rie Ishii, Takafumi Ouchi, Shumpei P. Yasuda, Yoshiaki Kikkawa.

"Myosin VI Haploinsufficiency Reduced Hearing Ability in Mice", Neuroscience, 2021

Publication

<1%

6

[cris.maastrichtuniversity.nl](https://cris.maastrichtuniversity.nl)

Internet Source

<1%

---

7	Karthik Nallasivan, Irmgard Haussmann, Alberto Civetta, Matthias Soller. "Channel nuclear pore protein 54 directs sexual differentiation and neuronal wiring required for female reproductive behaviors in <i>Drosophila</i> ", Cold Spring Harbor Laboratory, 2020 Publication	<1 %
8	<a href="http://cob.silverchair-cdn.com">cob.silverchair-cdn.com</a> Internet Source	<1 %
9	<a href="http://patents.google.com">patents.google.com</a> Internet Source	<1 %
10	Danfeng Li, Yongming Zeng, Peilin Shen, Xiaosheng Lin, Tian Yang, Binlie Chen, Zhiyan Ma, Huaiming Wang. "AVL9 is Upregulated in and Could Be a Predictive Biomarker for Colorectal Cancer", Cancer Management and Research, 2021 Publication	<1 %
11	Mossaid, Ikram, and Birthe Fahrenkrog. "Complex Commingling: Nucleoporins and the Spindle Assembly Checkpoint", Cells, 2015. Publication	<1 %
12	Submitted to Northeastern Illinois University Student Paper	<1 %
13	Submitted to University of Durham Student Paper	<1 %

---



---

14	<a href="http://www.labome.org">www.labome.org</a> Internet Source	<1 %
15	Submitted to University of Birmingham Student Paper	<1 %
16	Keesiang Lim, Goro Nishide, Elma Sakinatus Sajidah, Tomoyoshi Yamano et al. "Nanoscopic Assessment of Anti-SARS-CoV-2 Spike Neutralizing Antibody Using High-Speed AFM", Nano Letters, 2023 Publication	<1 %
17	<a href="http://academictree.org">academictree.org</a> Internet Source	<1 %
18	The Kinetochore, 2009. Publication	<1 %
19	X. Lin, C.-C. Liu, Q. Gao, X. Zhang, G. Wu, W.-H. Lee. "RINT-1 Serves as a Tumor Suppressor and Maintains Golgi Dynamics and Centrosome Integrity for Cell Survival", Molecular and Cellular Biology, 2007 Publication	<1 %
20	Anne Doerr, Elise de Reus, Pauline van Nies, Mischa van der Haar, Katy Wei, Johannes Kattan, Aljoscha Wahl, Christophe Danelon. "Modelling cell-free RNA and protein synthesis with minimal systems", Physical Biology, 2019 Publication	<1 %

---

21 Jianyu Zheng, Qing Tian, Weihong Hou, John A. Watts, Laura W. Schrum, Herbert L. Bonkovsky. "Tissue-specific expression of ALA synthase-1 and heme oxygenase-1 and their expression in livers of rats chronically exposed to ethanol", FEBS Letters, 2008  
Publication

---

22 Submitted to Jyväskylä University  
Student Paper

---

23 N. Elad, S. Abramovitch, H. Sabanay, O. Medalia. "Microtubule organization in the final stages of cytokinesis as revealed by cryo-electron tomography", Journal of Cell Science, 2010  
Publication

---

24 Schnerch, D, and E A Nigg. "Structural centrosome aberrations favor proliferation by abrogating microtubule-dependent tissue integrity of breast epithelial mammospheres", Oncogene, 2015.  
Publication

---

25 Submitted to Taipei Medical University  
Student Paper

---

26 mafiadoc.com  
Internet Source

---

27 "NuSAP, a novel microtubule-associated protein involved in mitotic spindle

organization", The Journal of Cell Biology,  
09/08/2003

Publication

---

28

Patrick D. Ellis Fisher, Qi Shen, Bernice Akpınar, Luke K. Davis et al. "A Programmable DNA Origami Platform for Organizing Intrinsically Disordered Nucleoporins within Nanopore Confinement", ACS Nano, 2018

Publication

---

29

Rannar Airik, Gisela G. Slaats, Zhi Guo, Anna-Carina Weiss et al. "Renal-Retinal Ciliopathy Gene Regulates DNA Damage Response Signaling", Journal of the American Society of Nephrology, 2014

Publication

---

30

[www.reproduction-online.org](http://www.reproduction-online.org)

Internet Source

---

31

Laurell, E.. "Phosphorylation of Nup98 by Multiple Kinases Is Crucial for NPC Disassembly during Mitotic Entry", Cell, 20110218

Publication

---

32

Parshuram J. Sonawane, Pravin S. Dewangan, Pankaj Kumar Madheshiya, Kriti Chopra et al. "Molecular and structural analysis of central transport channel in complex with Nup93 of Nuclear Pore Complex", Protein Science, 2020

Publication

---

<1 %

<1 %

<1 %

<1 %

<1 %

33

Portal, Maximiliano M, Valeria Pavet, Cathie Erb, and Hinrich Gronemeyer. "Human cells contain natural double-stranded RNAs with potential regulatory functions", Nature Structural & Molecular Biology, 2014.

Publication

<1 %

34

Submitted to University of Queensland

Student Paper

<1 %

35

pure.johnshopkins.edu

Internet Source

<1 %

36

www.neoplasia.com

Internet Source

<1 %

37

Lian, Audrey TY, Peter G Hains, Boris Sarcevic, Phillip J Robinson, and Megan Chircop. "IQGAP1 is associated with nuclear envelope reformation and completion of abscission", Cell Cycle, 2015.

Publication

<1 %

38

Prabakaran, T., E. I. Christensen, R. Nielsen, and P. J. Verroust. "Cubilin is expressed in rat and human glomerular podocytes", Nephrology Dialysis Transplantation, 2012.

Publication

<1 %

39

Zan Huang, Chenxin Gu, Zengdi Zhang, Rini Arianti, Aneesh Swaminathan, Kevin Tran, Alex Battist, Endre Kristof, Hai-Bin Ruan. "Supraclavicular brown adipocytes originate

<1 %

from Tbx1+ myoprogenitors", Cold Spring Harbor Laboratory, 2023

Publication

40

[api.crossref.org](https://api.crossref.org)

Internet Source

<1 %

41

Haruka Sudo, Kazunori Nakajima. "The mitotic tensegrity guardian tau protects mammary epithelia from katanin-like1-induced aneuploidy", Oncotarget, 2016

Publication

<1 %

42

Rui Shi, Liang Xu, Li Huang, Jing-Xin Cheng. "Nucleoporin 107 Promotes the Survival of Tumor Cells in Cervical Cancers", Gynecologic and Obstetric Investigation, 2019

Publication

<1 %

43

Yang, Xusan, Hao Xie, Eric Alonas, Yujia Liu, Xuanze Chen, Philip J Santangelo, Qiushi Ren, Peng Xi, and Dayong Jin. "Mirror-enhanced super-resolution microscopy", Light Science & Applications, 2016.

Publication

<1 %

44

[vbn.aau.dk](https://vbn.aau.dk)

Internet Source

<1 %

45

Endo, A, A Moyori, A Kobayashi, and R W Wong. "Nuclear mitotic apparatus protein, NuMA, modulates p53-mediated transcription in cancer cells", Cell Death and Disease, 2013.

Publication

<1 %

---

46

Rabut, G.. "Nucleocytoplasmic transport:  
Diffusion channel or phase transition?",  
Current Biology, 20010724

Publication

---

<1 %

---

Exclude quotes      On

Exclude matches      Off

Exclude bibliography      On

# Nucleoporin Nup58 localizes to centrosomes and mid-bodies during mitosis

---

GRADEMARK REPORT

---

FINAL GRADE

**/0**

GENERAL COMMENTS

**Instructor**

---

PAGE 1

---

PAGE 2

---

PAGE 3

---

PAGE 4

---

PAGE 5

---

PAGE 6

---

PAGE 7

---

PAGE 8

---

PAGE 9

---

PAGE 10

---

PAGE 11

---

PAGE 12

---

PAGE 13

---