

IPTEK

The Journal of Engineering

2022 | Institut Teknologi Sepuluh Nopember

eISSN 2807-5064
pISSN 2337-8557

[HOME](#) [ABOUT](#) [LOGIN](#) [REGISTER](#) [SEARCH](#) [CURRENT](#) [ARCHIVES](#) [ANNOUNCEMENTS](#)

Home > **IPTEK The Journal of Engineering**

IPTEK The Journal of Engineering

IPTEK The Journal of Engineering (p-ISSN: 2337-8557, e-ISSN:2807-5064) is an academic journal on the issued related to engineering and technology. IPTEK The Journal of Engineering published by Pusat Publikasi Ilmiah, Institut Teknologi Sepuluh Nopember. IPTEK The Journal of Engineering published first time in August 2014. From 2014-2018 (Volume 1-4) IPTEK The Journal of Engineering publish three issues (numbers) annually (April, August, and December). Since 2019 published annually in April and August. It is open to all scientist, researchers, education practitioners, and other scholars. Therefore this journal welcomes various topics in different engineering disciplines. Our target is to reach all universities, research centers and institutes worldwide.

Call for Papers

IPTEK The Journal of Engineering is an open-access journal, which means that visitors all over the world could read, download, cite, and distribute papers published in this journal for free. We adopt a peer-review model, which insured fast publishing and convenient submission. In addition to peer-reviewed original research papers, the Editorial Board welcomes original research reports, state-of-the-art reviews and communications in the broadly defined field of engineering science and technology. Theses, dissertations, research papers, and reviews are all acceptable for publication.

All topics should relevant to the issues faced by industries, governments, and communities. The broad-based topics may be covered by the following knowledge areas:

Computer Engineering and Information Systems (Telematics, Algorithms and Programming, Network Based Computing, Smart Computing and Vision, Intelligent Information Management, Computer Architecture and Networking, Applied Modeling and Computing, Graphics Interaction and Games, Software engineering, Information Technology Infrastructure and Security, Information Systems Management, Data Engineering and Business Intelligence, Data Acquisition and Information Dissemination, Enterprise System, and Smart Cities and Cyber Security)

Civil Infrastructure Engineering (Hydrotechnics and Surveying, Construction Implementation Management, Building Materials and Structures, and Transportation and Geotechnics)

[Contact](#)

[Focus and Scope](#)

[Editorial Board](#)

[Reviewers](#)

[Author Guidelines](#)

[Authors Demography](#)

[Publication Ethics](#)

[Online Submissions](#)

[Copyright Notice](#)

[Article Processing Charges](#)

[Plagiarism Checker](#)

[Peer Review Process](#)

TEMPLATES



Mechanical Engineering (Energy Conversion, Metallurgical and Materials Engineering, Mechanical Design, and Manufacture)

Electrical Engineering Automation (Cyber Physical, Automation, and Industrial Robots, Programmable Logic Controller and Control System, Antennas and Propagation, Instrumentation, Measurement and Power System Identification, Multimedia Telecommunications Network, Multimedia Communication, Electric Energy Conversion, Electric Power System Simulation, High voltage, System and Cybernetics, Microelectronics and Embedded Systems, Biocybernetics, Instrumentation and Biomedical Signal Processing, Multimedia Computing and Machine Intelligence, and Digital Signal Processing)

Chemical Engineering (Applied Chemistry, Biochemical and Bioprocess, Advance Functional Materials and Analysis, Thermodynamic, Chemical Reaction, Material and Nanocomposite, Bioenergy, Wastewater Treatment, Process Integration, Fluid Mechanic, and Sustainable Industrial Systems)

Instrumentation Engineering (Control Instrumentation, Measurement Instrumentation, Photonic Engineering, Vibration and Acoustics, and Embedded Systems and Physical Cyber)

Business Statistics (Business Analytic, and Quality and Productivity Engineering)

And physical, chemical, biological, and environmental sciences that are directly related to engineering.

Please **click here** to submit your paper.



USER

Username

Password

Remember me

Login

INDEXED BY



PARTNERSHIP



FPTVI LSP (Forum Perguruan Tinggi Vokasi Indonesia Asosiasi Lembaga Sertifikasi Profesi)



Announcements

No announcements have been published.

[More Announcements...](#)



This work is licensed under a Creative Commons Attribution 4.0 International License. IPTEK The Journal of Engineering published by Pusat Publikasi Ilmiah, Institut Teknologi Sepuluh Nopember.

Please contact us for order or further information at: **email: iptek.joe@gmail.com** Fax/Telp: 031 5992945. Editorial Office Address: **Pusat Riset Building 6th floor, ITS Campus, Sukolilo, Surabaya 60111, Indonesia.**



MIA (Pusat Unggulan IPTEK
Mechatronics and Industrial
Automation)



APTIMOR (Aktor Penyedia
Teknologi Industri Mekatronika,
Otomasi dan Robotika)

ISSN

ISSN 2807-5064



VISITORS AND STATISTICS

Visitors

 ID 5,874	 CN 108
 US 775	 PH 96
 IN 209	 KR 84
 MY 137	 TH 73
 JP 136	 IR 65

Pageviews: 37,704



FONT SIZE

Vol 3, No 3 (2017)

TABLE OF CONTENTS

IPTEK

JOURNAL OF ENGINEERING

CONTENTS

Analysis of Head Losses Consequent Section Diameter, Pipe Material and Flow Debit Using Contrast Test (Scheffe's Method) at 900 Elbow Joint
AM. MUFARRIH, SAUT KASDIARDI SILALAH, IRWAN SETYOWIDODO 9

Variability of Sea Surface Temperature in Indonesia Based on Aqua Modis Satellite Data
NURUL FATIMAH YUNITA, MUHAMMAD ZIKRA 15

Influence of the Compression Ratio and Duration Injection on Performance and Emission of Sinjai Engine Type Flexible Fuel Engine 150 cc Fueled Bioethanol E70
HANAPI HASAN, BAMBANG SUDARMANTA, MARTHEN PALOBORAN 19

Influence of The Compression Ratio and Ignition Timing On CB150R Engine Performance with 85% Bioethanol Gasoline Blended Fuel
YULI MAFENDRO D. E. S, BAMBANG SUDARMANTA, MARTHEN PALOBORAN 25

In The Face of Gentrification: A Case Study of Social Capital in supporting Community Efforts to Form A Collective Action
AZKA NUR MEDHA, PUTU GDE ARIASITTA 30

IPTEK	Vol. 3	Number 3	Pages 9—36	Surabaya Dec 2017	E-ISSN: 2337-8557
-------	--------	----------	------------	----------------------	----------------------



This work is licensed under a Creative Commons Attribution 4.0 International License. IPTEK The Journal of Engineering published by Pusat Publikasi Ilmiah, Institut Teknologi Sepuluh Nopember.

Please contact us for order or further information at: email: [iptek.joe\[at\]gmail.com](mailto:iptek.joe[at]gmail.com) Fax/Telp: 031 5992945. Editorial Office Address: Pusat Riset Building 6th floor, ITS Campus, Sukolilo, Surabaya 60111, Indonesia.

Contact

Focus and Sc

Editorial Boar

Reviewers

Author Guidel

Authors Dema

Publication El

Online Submi

Copyright Not

Article Proces

Plagiarism Cf

Peer Review

TEMPLATE:



USER

Username

Password

Remember

Login

INDEXED B



PARTNERS



FPTVI LSP (F
Tinggi Vokasi
Lembaga Sert



Editorial Board

Chief Editor

- **Eva Oktavia Ningrum**, Institut Teknologi Sepuluh Nopember, Department of Industrial Chemical Engineering, Surabaya, Indonesia (Scopus, Google Scholar, Sinta)

Members of Section Editor

- **Prof. Tegoeh Tjahjowidodo**, KU Leuven, Belgium (Scopus, Google Scholar)
- **Prof. Amer Hameed**, Cranfield University, United Kingdom (Scopus)
- **Prof. Muhammad Aziz**, The University of Tokyo, Japan (Scopus, Google Scholar)
- **Prof. Estiko Rijanto**, LIPI Telimek, Bandung, Indonesia (Scopus, Google Scholar, Sinta)
- **Prof. Hendro Wicaksono**, Jacobs University Bremen, Germany (Scopus)
- **Hendro Nurhadi**, Institut Teknologi Sepuluh Nopember, Department of Industrial Mechanical Engineering, Surabaya, Indonesia (Scopus, Google Scholar, Sinta)
- **Dedy Zulhidayat Noor**, Institut Teknologi Sepuluh Nopember, Department of Industrial Mechanical Engineering, Surabaya, Indonesia (Scopus, Google Scholar, Sinta)
- **Achmad Dwitama Karisma**, Institut Teknologi Sepuluh Nopember, Surabaya, Indonesia (Scopus, Google Scholar, Sinta)
- **Berlian Al Kindhi**, Institut Teknologi Sepuluh Nopember, Department of Automation Electronic Engineering, Surabaya, Indonesia (Scopus, Google Scholar, Sinta)
- **Atria Pradityana**, Institut Teknologi Sepuluh Nopember, Surabaya, Indonesia (Scopus, Google Scholar, Sinta)
- **Putri Yeni Aisyah**, Institut Teknologi Sepuluh Nopember, Department of Instrumentation Engineering, Surabaya, Indonesia (Scopus, Google Scholar, Sinta)
- **Saidah Altway**, Institut Teknologi Sepuluh Nopember, Department of Industrial Chemical Engineering, Surabaya, Indonesia (Scopus, Google Scholar, Sinta)
- **Afan Hamzah**, Institut Teknologi Sepuluh Nopember, Department of Industrial Chemical Engineering, Surabaya, Indonesia (Scopus, Google Scholar, Sinta)



This work is licensed under a Creative Commons Attribution 4.0 International License. IPTEK The Journal of Engineering published by Pusat Publikasi Ilmiah, Institut Teknologi Sepuluh Nopember.

Please contact us for order or further information at: email: [iptek.joe\[at\]gmail.com](mailto:iptek.joe[at]gmail.com) Fax/Telp: 031 5992945. Editorial Office Address: **Pusat Riset Building 6th floor, ITS Campus, Sukolilo, Surabaya 60111, Indonesia.**

Contact

Focus and Sc

Editorial Boar

Reviewers

Author Guidel

Authors Dem

Publication EI

Online Submi

Copyright Not

Article Proces

Plagiarism Cf

Peer Review

TEMPLATE:



USER

Username
Password
 Remember

INDEXED B



PARTNERS



FPTVI LSP (F
Tinggi Vokasi
Lembaga Sert



[4] G. S. Lee, "A new approach to the design of a digital filter for speech communication," IEEE Trans. Comp., vol. 46, pp. 695-701, June 1997.

eJournal (from database):

[5] H. Ayasso and A. Mohammad-Djafari, "Joint NDT Image Restoration and Segmentation Using Gauss–Markov–Potts Prior Models and Variational Bayesian Computation," IEEE Transactions on Image Processing, vol. 19, no. 9, pp. 2265-77, 2010. [Online]. Available: IEEE Xplore, <https://www.ieee.org>. [Accessed Sept. 10, 2010].

eJournal (from internet):

[6] A. Altun, "Understanding hypertext in the context of reading on the web: Language learners' experience," Current Issues in Education, vol. 6, no. 12, July, 2005. [Online serial]. Available: <https://cie.ed.asu.edu/volume6/number12/>. [Accessed Dec. 2, 2007].

Conference Paper:

[7] L. Liu and H. Miao, "A specification based approach to testing polymorphic attributes," in Formal Methods and Software Engineering: Proceedings of the 6th International Conference on Formal Engineering Methods, ICFEM 2004, Seattle, WA, USA, November 8-12, 2004, J. Davies, W. Schulte, M. Barnett, Eds. Berlin: Springer, 2004. pp. 306-19.

Conference Proceedings:

[8] T. J. van Weert and R. K. Munro, Eds., Informatics and the Digital Society: Social, ethical and cognitive issues: IFIP TC3/WG3.1&3.2 Open Conference on Social, Ethical and Cognitive Issues of Informatics and ICT, July 22-26, 2002, Dortmund, Germany. Boston: Kluwer Academic, 2003.

Newspaper Article (from database):

[9] J. Riley, "Call for new look at skilled migrants," The Australian, p. 35, May 31, 2005. [Online]. Available: Factiva, <https://global.factiva.com>. [Accessed May 31, 2005].

Technical Report:

[10] K. E. Elliott and C.M. Greene, "A local adaptive protocol," Argonne National Laboratory, Argonne, France, Tech. Rep. 916-1010-BB, 1997.

Patent:

[11] J. P. Wilkinson, "Nonlinear resonant circuit devices," U.S. Patent 3 624 125, Jul. 16, 1990.

Standard:

[12] IEEE Criteria for Class IE Electric Systems, IEEE Standard 308, 1969.

Thesis/Dissertation:

[13] J. O. Williams, "Narrow-band analyzer," Ph.D. dissertation, Dept. Elect. Eng., Harvard Univ., Cambridge, MA, 1993.

The author has to fill stamped **declaration letter** about the originality of submitted manuscript.

Sent the manuscript to :

IPTEK The Journal of Engineering

Institute for Research and Public Services

(Lembaga Penelitian dan Pengabdian kepada Masyarakat, LPPM) ITS

Kampus ITS, Sukolilo, Surabaya (60111), Indonesia

Phone/Fax : +62-31-5992945

E-mail: [iptek.joe\[at\]gmail.com](mailto:iptek.joe[at]gmail.com)

Website : <https://www.ipitek.its.ac.id>

Correspondence of delivered manuscript needs to mention title, name of composer, and date of delivery of manuscript, but we encourage author to send it by email.

The **sample** of manuscript and more detail information can be found on **here**.

Submission Preparation Checklist

As part of the submission process, authors are required to check off their submission's compliance with all of the following items, and submissions may be returned to authors that do not adhere to these guidelines.

1. The submission has not been previously published, nor is it before another journal for consideration (or an explanation has been provided in Comments to the Editor).
2. The submission file is in OpenOffice, Microsoft Word, RTF, or WordPerfect document file format.
3. Where available, URLs for the references have been provided.
4. The text is single-spaced; uses a 12-point font; employs italics, rather than underlining (except with URL addresses); and all illustrations, figures, and tables are placed within the text at the appropriate points, rather than at the end.
5. The text adheres to the stylistic and bibliographic requirements outlined in the **Author Guidelines**, which is found in About the Journal.

Copyright Notice

IPTEK THE JOURNAL OF ENGINEERING COPYRIGHT AND CONSENT FORM

To ensure uniformity of treatment among all contributors, other forms may not be substituted for this form, nor may any wording of the form be changed. This form is intended for original material submitted to IPTEK The Journal of Engineering and must accompany any such material in order to be published by IPTEK The Journal of Engineering. Please read the form carefully and keep a copy for your files.



MIA (Pusat Ur Mechatronics Automation)



APT (Asosiasi Profesi Teknik Industri dan F)

ISSN



VISITORS A

Visitors	
	ID 5,874
	US 775
	IN 209
	MY 137
	JP 136
Pageviews: 37	

FONT SIZE

Influence of the Compression Ratio and Duration Injection on Performance and Emission of Sinjai Engine Type Flexible Fuel Engine 150 cc Fueled Bioethanol E70

Hanapi Hasan¹, Bambang Sudarmanta¹, Marthen Paloboran²

Abstract—In this study, the effects of using gasoline (E0) and gasoline-ethanol blends E70 on engine performance and exhaust emissions have been experimentally investigated. The investigation was conducted on a single-cylinder, four-stroke, spark ignition engine. The experiments were performed by varying the compression ratio and duration injection (100%, 125%, 150%, 175% and 200%) at a speed of 2000 up to 8000 rpm at full open throttle. The experimental results showed that blending gasoline with ethanol slightly increased the torque and decreased Carbon Monoxide (CO) and hydrocarbon (HC) emissions. It was also found that blending with ethanol allows increasing the compression ratio without knock occurrence.

Keywords—Bioethanol E70, Compression ratio, Duration injection, Emissions, Performance.

I. INTRODUCTION

The rapid depletion of the world's crude oil reserves and environmental considerations has focused on the clean, renewable and sustainable energy systems. The energy crisis and environmental pollution created an incentive to study and evaluate alcohol as a fuel in spark ignition engines [1], [2].

Renewable alternative fuels, as defined by the Energy Policy ACT of 1992 (EPACT), include alcohols (biomethanol, bioethanol and others), natural gas, liquified petroleum gas, hydrogen, coal derived liquid fuels, biofuels (include biodiesel, syntesis gas and others), and electricity [3]. They are a major force in the effort to reduce fossil fuels consumption and environmental impact (include harmful pollutants and exhaust emissions) in the transportation sectors [4]. Combustion of fossil fuel does not only produce carbon dioxide, but also CO, HC and NOX emissions. The pollutants are endangering of human survival and all the ecosystems on the Earth [5].

At the present time ethanol is used in spark ignition engines by blending with gasoline at low concentrations without any modification. Pure ethanol can be used in spark ignition engines but necessitates some modifications to the engine [2], [6]. Some changes that can be done are changing the ignition time, change the compression ratio of the engine and as well as modify the engine fuel input system [7]. Introducing the fuels at the point of

consumption or online blending can also be used to avoid phase separation. An online fuel blending system was developed by using separate tanks for ethanol and gasoline and a stepper motor based control valve with a mixing chamber. Performance and emission characteristics with E70 (70% ethanol in gasoline) were observed to be better than gasoline and E10 [8].

In research [9] variation in the compression ratio from 6: 1 up to 10: 1 with a gasoline ethanol mixture using concentrations of 0% (E0), 25% (E25), 50% (E50), 75% (E75) and 100% (E100) indicate that when compared to E0 fuel, the power increases of 3%, 6% and 2% are obtained with E25, E50 and E75 fuels. In the study [4] indicate that fuel E50 with CR 9.6 has a range of initial time of combustion of 20°-26 ° BTDC and resulted in torque down by 4.12%, while E50 CR 11.6 has a range of initial burning time of 17°-23° resulting in torque up 3,68%. These parameters require a higher compression ratio, require higher pressure, and require synchronization between injection timing and ignition timing. Study of pure ethanol on a SI engine equipped with a turbocharger and a modified motor on a fuel line system, a cylindrical geometry and raised the compression ratio from 9.5 to 12.5 [10]. The 12.5 compression ratio is selected to optimize engine efficiency. At full load, the maximum torque and power generated is 15% greater than gasoline fuel.

In the study [11] investigate effect of the compression ratio on the performance of the gasoline engine with a mixture of 78% 22% gasoline ethanol (E22) or ethanol hydrate (E100). Variations in speeds in the range of 1,500-6,500 rpm with three compression ratios tested were 10: 1, 11: 1 and 12: 1. The results showed that higher compression ratios improved engine performance for both fuels throughout the tested speed range, with major effects observed when ethanol hydrate was used. [12] In his

¹Hanapi Hasan, Bambang Sudarmanta are with Department of Mechanical Engineering, Faculty of Industrial Engineering, Institut Teknologi Sepuluh Nopember (ITS), Kampus ITS Sukolilo, Surabaya 60111, Indonesia. E-mail: hanapihasan7@gmail.com; sudarmanta@me.its.ac.id;

²Marthen Paloboran is with Department of Automotivel Engineering, Faculty of Engineering, Universitas Negeri Makasar, Kampus UNM Makasar, 90242, Indonesia marthen.paloboran@unm.ac.id.

research, found that torque E60 shows the highest increase of 14% when the compression ratio increases from 8: 1 to 13: 1. [13] investigate effect of the mixture of ethanol and unleaded gasoline (E0, E10, E20, E40 and E60), ignition timing and compression ratios for performance and exhaust emissions. Increased torque on all ethanol additions occurred at 10: 1 compression ratio, the largest CO decrease (32%) occurred there was E40 and compression ratio 9: 1 while the greatest HC decrease (31%) occurred at E60 and compression ratio 10: 1.

II. METHOD

This study uses the Sinjai engine type Flexible Fuel Engine 150 cc with literature studied on the use of bioethanol fuel. For standard data, tested on a fuel engine Pertamina (RON 92) with a standard ECU and a Programmable ECU. Furthermore, for the test data, performed with ECU Programmable and bioethanol fuel E70 (RON 109). This test uses a waterbrake dynamometer and is done in fully open throttle condition with engine rotation of 2000, 3000, 4000, 5000, 6000, 7000, and 8000 rpm. In the test data, a fuel injection test was performed to achieve AFR bioethanol E70 with injection percentages of 100, 125, 150, 175 and 200 percent of the total fuel injection standard and compression ratio which has been changed to 12, 12,5, and 13. At each engine rotation change, data recording includes torque, consumption time of 25 ml of fuel, exhaust emissions and temperature (exhaust, engine and oil).

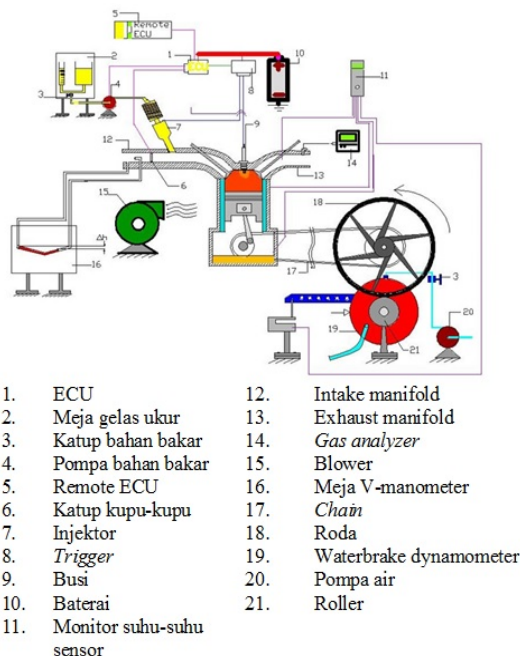


Figure 1. Experimental Scheme.

III. RESULT AND ANALYSIS

A. Engine Performance Analysis Using Pertamina Fuel (RON 92)

From the tests that have been done, obtained data in the form of torque from engine on the use of Pertamina fuel (RON 92) with standard ECU and ECU programmable. The

test is done at engine speed of 2000 to 8000 rpm. Measurements of the torque released by the engine are carried out using a waterbrake dynamometer that has been installed with load cell already equipped with data acquisition, so that the result of the test can be directly read on the monitor in the form of torque data with unit kgf.m, which will be converted and processed first Before it is presented in graphical form. The engine torque measurement data can be shown in figure 2 below.

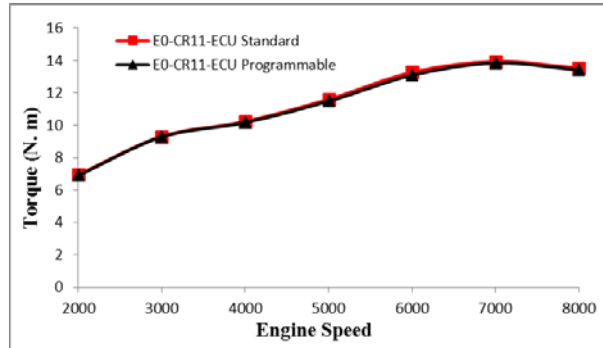


Figure 2. Torque Graph as Engine Speed Function

From figure 2 above shows the trendline that represents the torque of the engine at each engine rotation and the type of ECU used. The torque generated by the Sinjai engine on both ECU types will increase as engine speed increases from 2000 rpm to 7000 rpm and will decrease at 7000 rpm engine speeds up to 8000 rpm. In the standard ECU, the resulting torque of 6.958 N.m at 2000 rpm rotation which then will tend to rise until it reaches maximum torque at 7000 rpm rotation of 13.936 N.m and then the torque of the engine will decrease to 13.524 N.m at 8000 rpm rotation. In the programmable ECU, the resulting torque of 6.909 N.m at 2000 rpm rotation will then tend to rise until it reaches maximum torque at 7000 rpm rotation of 13.838 N.m and then the torque of the engine will decrease up to 13.416 N.m at 8000 rpm rotation.

The increase in torque as the engine spins increases due to the higher rotation, the airflow entering the combustion chamber is more turbulent which will cause the air and fuel mixture to become better, so the torque will increase. In addition, increased engine speed is caused by increasing fuel flow rate, so with more fuel coming into the combustion chamber, the resulting torque will increase. But increased engine speed will also increase friction, increase operational temperature, and increase the likelihood of incomplete combustion resulting in decreased torque.

From the above data can be calculated that at 2000 rpm rotation, torque decrease will occur by 0.7% when replacing the standard ECU with programmable ECU. At 7000 rpm rotation, the torque decrease is 0.7% of the standard ECU, and at engine speed of 8000 rpm, the decrease in torque is 0.8% of the standard ECU. Despite the decrease in torque, the programmable ECU is considered feasible for use in this study because the reduced torque is very small. Therefore, the further analyzes are compared with E0 with the use of programmable ECU.

B. Performance Analysis of Fuel Engine Bioethanol E70 (RON 104) Variation in Fuel Injection Duration

Prior to testing with fuel Bioethanol E70 (RON 104) variation compression ratio, then first tested with variations in fuel injection duration. This is done because Bioethanol fuel has an AFR of 9: 1. Therefore, it is necessary to increase the duration of fuel injection so that the AFR of the engine that originally 14.7: 1 can approach 9: 1. Mapping fuel injection is done to increase the incoming fuel injection from 100% to 200%. The test of variation of fuel injection duration is carried out to produce maximum torque at each engine rotation by inserting mapping between 100%, 125%, 150%, 175%, 200% of the injector spraying discharge, then from the test result is taken maximum torsi from each engine rotation So the magnitude of mapping duration of injection of maximum fuel in each engine speed can be obtained. From the test data obtained in the form of torque from engine Sinjai engine on fuel use Bioethanol E70 (RON 104) with ECU programmable. The test is done at engine speed of 2000 to 8000 rpm. Measurements of the torque released by the engine are carried out using a waterbrake dynamometer that has been installed with load cell that has been equipped with data acquisition, so that the results of the test can be directly read on the monitor in the form of torque data with unit kgf.m, which will be converted and processed first Before it is presented in graphical form. The results of the engine torque measurements can be shown in figure 3 below.

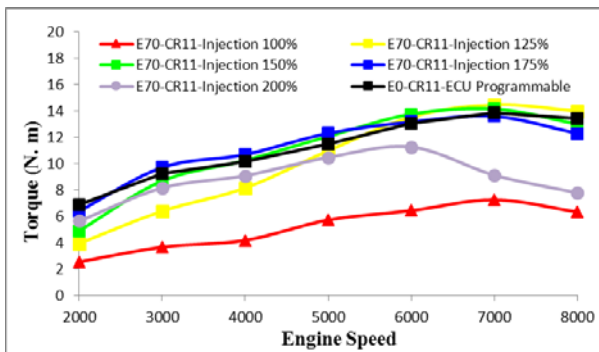


Figure 3. Torque at variation duration injection and engine speed

From figure 3 above shows the trendline representing torque at each engine rotation and variation of fuel injection duration with fuel consumption of Bioethanol E70 (RON 104). The torque generated by the duration of 100%, 125%, 150%, and 175% has a trendline that is almost the same as the trendline shown by fuel Pertamina (RON 92) that the torque value continues to increase until 7000 rpm rotation then drops at 8000 rpm. This does not occur at 200% duration, in this duration the torque value continues to increase until 6000 rpm speed then dropped drastically in 7000 rpm and 8000 rpm rotation.

If from the above graph taken samples at 5000 rpm rotation can be seen that by replacing fuel from Pertamina to Bioethanol E70 (with 100% injection duration), torque from engine will decrease from 11,486 N.m to 5,735 N.m. This indicates that the torque decreased by 50%. Then if the duration is increased to 125%, the torque generated is 10.981 N.m, so the torque decrease from Pertamina fuel usage can be reduced to 4.6%. At a 150% injection

duration, the torque increase occurred at 5.1% to 12.074 N.m, while the torque increased by 7.2% to 12.315 N.m on the use of 175% injection duration. Then at 200% duration, the value of torque decreased by 8.7% with a value of 10,481 N.m.

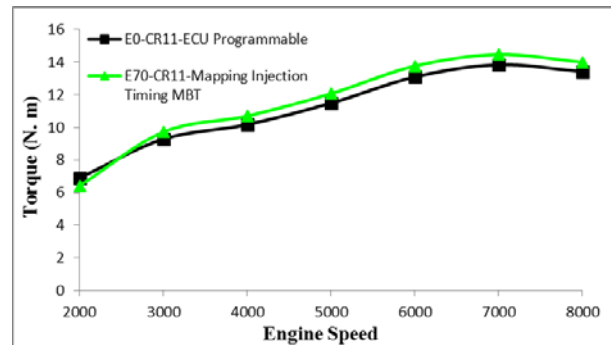


Figure 4. Torque Mapping Injection Graph as Engine Speed Function

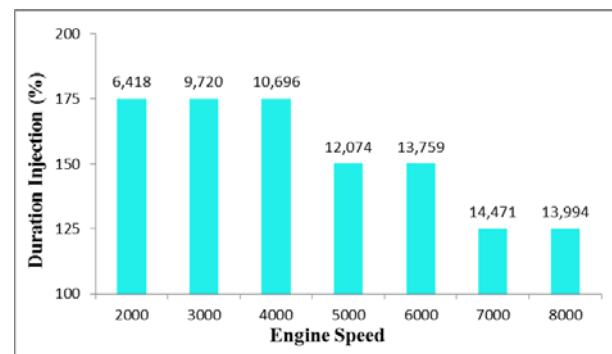


Figure 5. Optimal Injection Mapping Graph

From figure 4 it can be seen from the graph's trendline that the torque generated by injection mapping on E70 is greater than torque with Pertamina fuel (E0), so with the mapping of fuel injection duration it can be concluded that there is an increase of torque value from Pertamina fuel usage. Test results with variations of fuel injection duration on Sinjai engine shown in figure 5 obtained optimal mapping for engine Sinjai engine bioethanol fuel E70 is on the engine speed 2000 to 4000 rpm best on 175% fuel injection mapping, 5000 engine rotation and 6000 rpm on 150% fuel injection mapping, as well as on 7000 rotations and 8000 rpm fuel injection mapping 125%.

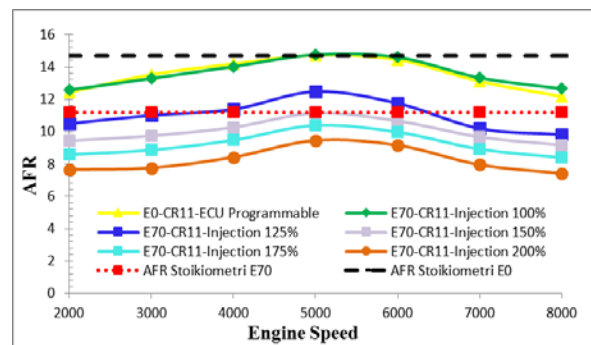


Figure 6. AFR Variation Injection Graph as Engine Speed Function

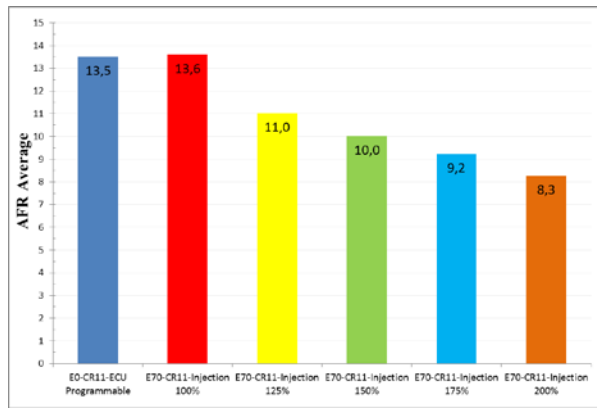


Figure 7. Graph Average AFR Variation Injection

From figure 6 it can be observed that with the replacement of the fuel into bioethanol, AFR will become poorer than that produced when using Pertamina. But with the addition of fuel injection duration up to 200%, AFR will get richer. This can happen because bioethanol fuel has high latent heat. The latent high heat causes the temperature of air entering the combustion chamber to decrease as the heat from the air is absorbed by bioethanol fuel to evaporate. As a result, the air density becomes higher so the air volume becomes smaller. Because of this, then the supply of air entering the combustion chamber will be more due to the empty spaces caused by the smaller volume of air in the combustion chamber. In this condition, the mixture of fuel and air is called a poor mix (lean).

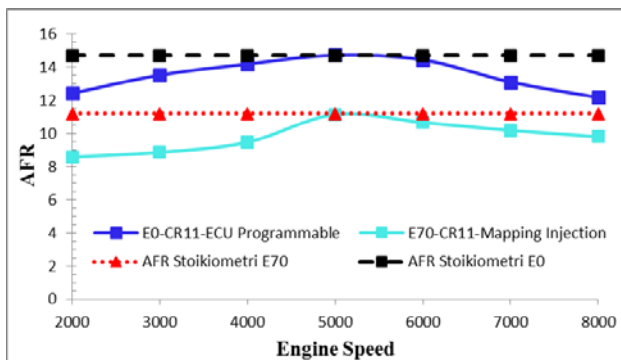


Figure 8. AFR Mapping Injection Graph as Engine Speed Speed Function

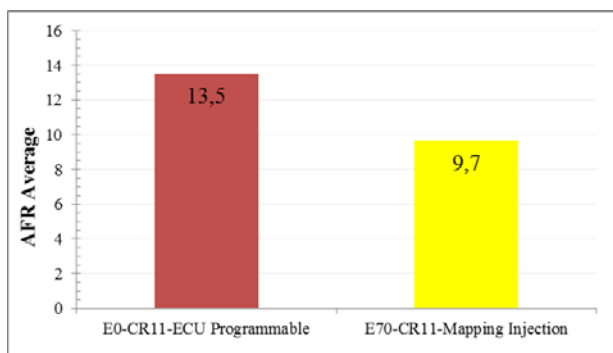


Figure 9. Graph Average AFR Mapping Injection

In the use of Bioethanol E70, by increasing the fuel injection duration from 125% to 175%, the torque of the engine will be greater than 100% duration. This happens because the AFR of the engine decreases as the mass flow rate of fuel continues to increase while the air flow rate of the air is relatively constant. Each decrease from AFR

Pertamax was 18.4%, 25.8%, and 31.7% for the duration of 125%, 150%, and 175%. This falling AFR causes more complete combustion, because AFR stoichiometry from bioethanol is 9: 1, richer than Pertamina fuel. At a 125% injection duration, the torque generated at high rotation 7000 and 8000 rpm is the highest value of the duration of the other injection. This occurs because of the injection duration of 125%, the AFR produced is closest to the stoichiometric AFR of bioethanol. While at 200% duration, there is a drastic reduction of torque from 6000 rpm to 8000 rpm. This happens because the average AFR generated at the duration of 200% is 8.3: 1. AFR is too rich for bioethanol fuel which means too much fuel supply, so that in the high torque generated will be smaller.

C. Performance Analysis of Fuel Engine Bioethanol E70 (RON 104) Variation of Compression Ratio

After testing the variation of fuel injection duration, then further testing with variation of ignition time and compression ratio can be done. In this test, the Sinjai engine should be set at a 13: 1 compression ratio by replacing the pistons with modified pistons with the addition of dome. After testing with 13: 1 compression ratio is complete, then the addition of packing so that the compression ratio can go down to 12.5: 1, and 12: 1. Testing with variation of this compression ratio aims to determine the effect on the performance, exhaust emissions, and operating temperature of the sinjai engine.

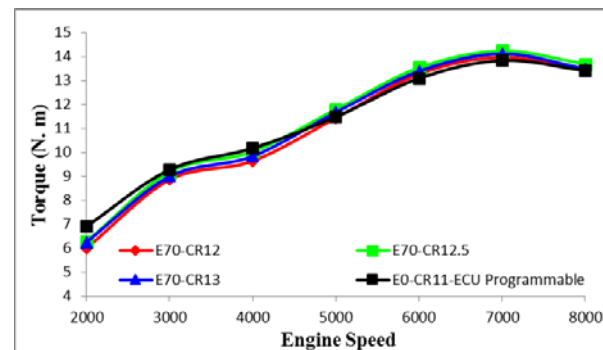


Figure 10. Graph of Torque Variation of Compression Ratio as Engine Speed Function

From Figure 10 above shows the trendline that represents the torque of the engine at each compression ratio and engine speed. Torque generated by the Sinjai engine on all variations of the compression ratio will increase along with the engine speed increase from 2000 rpm to 7000 rpm and will decrease at engine speed 7000 rpm to 8000 rpm. From the above graph taken one speed engine samples at 7000 rpm for analysis, because in this engine rotation maximum torque occurs. At E70 with a compression ratio of 12.5: 1, the resulting torque of 13.974 N.m increases 1% of the torque generated by E0. At E70 with a compression ratio of 12.5: 1, the resulting torque is 14.239 N.m and increases 2.9% of the torque generated by E0. While at E70 with a 13: 1 compression ratio, the resulting torque of 14.122 N.m increased 2.05% of the torque generated by E0.

Increased torque as the compression ratio increases due to higher compression ratio, the pressure that occurs in the combustion chamber will be higher than the standard

compression ratio of 11: 1. Because of this higher pressure, the combustion that occurs in the combustion chamber will have a higher pressure to push the piston from the top dead point (TMA) to the lower dead point (TMB) at the engine working step, resulting in higher torque.

D. Exhaust Emissions Analysis of Fuel Engine Bioethanol E70 (RON 104) Variation in Fuel Injection Duration

Carbon monoxide is one of the combustion gases that are harmful to health and adversely affect the environment. The emission of CO gas in motor vehicle exhaust is caused by lack of perfect combustion in the combustion chamber. In this study more focused on the influence of fuel changes from E0 to E70, as well as the addition of injection duration and compression ratio of the engine. The increasing engine speed, the amount of CO gas emissions will increase. This is caused by incomplete combustion in the upper spin due to a mixture of fuel and increasingly rich air.

In the CO emission graph of engine speed, the trendline tend to be the same for fuel replacement from E0 to E70 with injection mapping. The value of CO with E0 to E70 replacement will decrease because bioethanol fuel has oxygen element in its chemical bond. The oxygen element will bind CO to become CO₂.

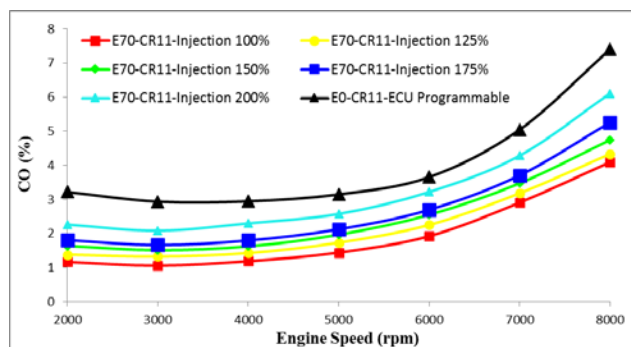


Figure 11. Carbon monoxide at variation duration injection and engine speed

HC Emissions or Unburned Hydrocarbons are the amount of fuel that does not burn in the combustion process. Theoretically HC emission levels will decrease as engine speed increases. This is due to the increased homogeneity of air and fuel mixtures as the engine speed increases. But in the upper lap, HC emissions will increase because the combustion that occurs when the lap top will be more imperfect because of the fuel mixture and the increasingly rich air in the lap top.

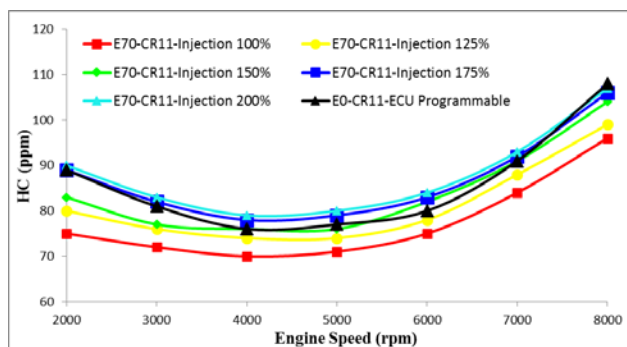


Figure 12. Hydrocarbons at variation duration injection and engine speed

Figure 12 above shows the emission of HC as the engine speed increases. In low rotation HC emissions tend to be high and decrease with increasing engine speed. Once the HC emission is at its lowest point it will increase until rpm is at 8000 rpm.

IV. CONCLUSION

Duration injection appropriate can increase performance and reduce emissions engine. Optimal injection duration for Sinjai engine type Flexible Fuel Engine 150 cc fueled bioethanol E70 on engine speed 2000 up to 4000 rpm best on 175% fuel mapping, engine speed 5000 rpm and 6000 rpm at 150% fuel mapping, and at engine speed 7000 and 8000 rpm injection mapping 125%.

ACKNOWLEDGEMENT

This article is part of the research activities INSINAS 2017 about testing of gasoline-bioethanol engine through Institute for Research and Community Services (LPPM) ITS. So in this opportunity, author would like to thanks RISTEKDIKTI and LPPM ITS for support that has been given.

REFERENCES

- [1] W.-D. Hsieh, R.-H. Chen, T.-L. Wu, and T.-H. Lin, "Engine performance and pollutant emission of an SI engine using ethanol-gasoline blended fuels," *Atmos. Environ.*, vol. 36, no. 3, pp. 403–410, Jan. 2002.
- [2] F. Yüksel and B. Yüksel, "The use of ethanol-gasoline blend as a fuel in an SI engine," *Renew. Energy*, vol. 29, no. 7, pp. 1181–1191, Jun. 2004.
- [3] B. Sudarmanta, S. Darsopuspito, and D. Sungkono, "Influence of Bioethanol-Gasoline Blended Fuel on Performance and Emissions Characteristics from Port Injection Sinjai Engine 650 cc," *Appl. Mech. Mater.*, vol. 493, pp. 273–280, Jan. 2014.
- [4] B. Sudarmanta, B. Junipitoyo, A. Bachtiar, K. Putra, and I. N. Sutantra, "Influence of The Compression Ratio and Ignition Timing on Sinjai Engine Performance with 50% Bioethanol-Gasoline Blended Fuel," *ARPJ. Eng. Appl. Sci.*, vol. 11, no. 4, 2016.
- [5] M. E. N. Paloboran, I. N. Sutantra, B. Sudarmanta, M. E. N. Paloboran, I. N. Sutantra, and B. Sudarmanta, "Performances and Emissions Characteristics of Three Main Types Composition of Gasoline-Ethanol Blended in Spark Ignition Engines," *Int. Rev. Mech. Eng.*, vol. 10, no. 7, p. 552, Nov. 2016.
- [6] M. Al-Hasan, "Effect of ethanol-unleaded gasoline blends on engine performance and exhaust emission," *Energy Convers. Manag.*, vol. 44, no. 9, pp. 1547–1561, Jun. 2003.
- [7] G. A. Pamuji and B. Sudarmanta, "Studi Eksperimen Pengaruh Mapping Ignition Timing Dan Durasi Penginjeksian Bahan Bakar Terhadap Unjuk Kerja Dan Emisi....," Institut Teknologi Sepuluh Nopember, 2016.
- [8] A. Kumar, D. S. Khatri, and M. K. G. Babu, "An Investigation of Potential and Challenges with Higher Ethanol-gasoline Blend on a Single Cylinder Spark Ignition Research Engine." SAE International, 2009.
- [9] M. B. Celik, "Experimental determination of suitable ethanol-gasoline blend rate at high compression ratio for gasoline engine," *Appl. Therm. Eng.*, vol. 28, no. 5–6, pp. 396–404, Apr. 2008.
- [10] N. Jeuland, X. Montagne, and X. Gautrot, "Potentiality of Ethanol As a Fuel for Dedicated Engine," *Oil Gas Sci. Technol.*, vol. 59, no. 6, pp. 559–570, Nov. 2004.
- [11] R. C. Costa and J. R. Sodr , "Compression ratio effects on an ethanol/gasoline fuelled engine performance," *Appl. Therm. Eng.*, vol. 31, no. 2–3, pp. 278–283, Feb. 2011.
- [12] H. S. Yücesu, T. Topg l, C.  inar, and M. Okur, "Effect of ethanol-gasoline blends on engine performance and exhaust emissions in different compression ratios," *Appl. Therm. Eng.*, vol.

26, no. 17–18, pp. 2272–2278, Dec. 2006.

- [13] T. Topgül, H. S. Yücesu, C. Çınar, and A. Koca, “The effects of ethanol–unleaded gasoline blends and ignition timing on engine performance and exhaust emissions,” *Renew. Energy*, vol. 31, no. 15, pp. 2534–2542, Dec. 2006.