



---

## Submission of the manuscript research paper

---

Abdul Malik <abdulmalik@unm.ac.id>  
To: zoobiomag2004@yahoo.com

Sat, May 25, 2019 at 11:04 PM

Dear Dr. Ioan Valentin Petrescu-Mag (Editor-in-Chief of AACL Bioflux)

Please consider the submitted manuscript research paper for publication in AACL Bioflux (Attached)

I declare the manuscript paper has not been published elsewhere and it has not been submitted simultaneously for publication elsewhere.

**Biodiversity assessment of mangrove vegetation for the sustainability of ecotourism area in West Sulawesi Indonesia**

The objective of this study is to assess the biodiversity of mangrove vegetation for the sustainability of ecotourism area in Bebanga Village of West Sulawesi Province, Indonesia. Biodiversity of mangrove has decreased in this area due to unsustainable use of mangrove for firewood, house materials and mainly for aquaculture ponds expansion. It has a potential threat to tourist attractions in mangrove ecotourism area and tourism business. More attention from stakeholders and decision-makers is required to conserve and restore mangrove areas lost to over-exploitation in this area. It is a high priority to maintain and possibly increase mangrove biodiversity for the sustainability of ecotourism area.

This manuscript paper is important and gives a contribution to the biodiversity of mangrove study, especially for the relationship between biodiversity and sustainability of mangrove ecotourism area where there are limited empirical case studies concerning this topic in developing countries. Hence this paper could be interest to broad international readers. In addition, the results finding is required by the public, policymakers, and businessman in planning, implementation, and monitoring in conservation for the sustainability of mangrove ecotourism area.

Corresponding author: Abdul Malik. E-Mail: [abdulmalik@unm.ac.id](mailto:abdulmalik@unm.ac.id)

Sincerely yours,

Abdul Malik  
Department of Geography  
Faculty of Mathematics and Natural Sciences  
Universitas Negeri Makassar (UNM)  
Jl. Malengkeri Raya, Kampus UNM Parangtambung Makassar, 90224  
South Sulawesi - Indonesia.

--  
Abdul Malik, Ph.D.

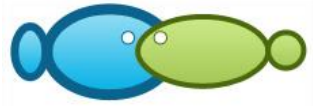
Department of Geography  
Faculty of Mathematics and Natural Sciences  
Universitas Negeri Makassar (UNM)  
Kampus UNM Parangtambung, Jl.Malengkeri Raya, Makassar, 90224  
South Sulawesi - INDONESIA  
Phone: +62-853 9859 2785 Fax: +62-411-880568  
E-mail: [abdulmalik@unm.ac.id](mailto:abdulmalik@unm.ac.id)

---

### 2 attachments

 **Manuscript.docx**  
242K

 **Submission letter AACL Bioflux\_AM.doc**  
61K



Submission letter

Article title:

Biodiversity assessment of mangrove vegetation for the sustainability of ecotourism area in West Sulawesi Indonesia

Name of the authors:

Abdul Malik, Abd. Rahim, Uca Sideng, Abdul Rasyid, Jamaluddin Jumaddin

Hereby I would like to submit the manuscript entitled “**Biodiversity assessment of mangrove vegetation for the sustainability of ecotourism area in West Sulawesi Indonesia**” to Aquaculture, Aquarium, Conservation & Legislation - International Journal of the Bioflux Society.

This manuscript was not submitted or published to any other journal. The authors declare that the manuscript is an original paper and contain no plagiarised text. All authors declare that they are not currently affiliated or sponsored by any organization with a direct economic interest in subject of the article. My co-authors have all contributed to this manuscript and approve of this submission.

Corresponding author

Abdul Malik

Date: 25 May 2019



Abdul Malik &lt;abdulmalik@unm.ac.id&gt;

---

**Submission of the manuscript research paper**

---

**gavriloaie ionel claudiu** <ionelclaudiu@yahoo.com>  
Reply-To: gavriloaie ionel claudiu <ionelclaudiu@yahoo.com>  
To: "abdulmalik@unm.ac.id" <abdulmalik@unm.ac.id>

Fri, May 31, 2019 at 12:53 AM

Dear Dr. Abdul Malik,

We received the paper. We need some time for a preliminary evaluation and then we will come back with a decision.  
Since I will be your editor, kindly keep in touch with me only from now on, not with dr. Petrescu-Mag.  
Thank you very much!

With best regards,  
Claudiu Gavriiloaie, PhD  
editor-in-chief AACL Bioflux journal

On Wednesday, May 29, 2019 11:08 PM, Mag Ioan Valentin <zoobiomag2004@yahoo.com> wrote:

Petrescu-Mag I. V., PhD, Hab. Senior Lecturer & Senior Researcher (CSI) USAMV Cluj & Bioflux SRL & University of Oradea & University of Liege Tel: 0040 744470794 ; e-mail [zoobiomag2004@yahoo.com](mailto:zoobiomag2004@yahoo.com) Visit our journals: Aquaculture, Aquarium, Conservation & Legislation [www.bioflux.com.ro/aac](http://www.bioflux.com.ro/aac) Advances in Environmental Sciences [www.aes.bioflux.com.ro](http://www.aes.bioflux.com.ro) Human & Veterinary Medicine [www.hvm.bioflux.com.ro](http://www.hvm.bioflux.com.ro) Advances in Agriculture & Botanic [www.aab.bioflux.com.ro](http://www.aab.bioflux.com.ro) Animal Biology & Animal Husbandry [www.abah.bioflux.com.ro](http://www.abah.bioflux.com.ro) Extreme Life, Biospeology & Astrobiology [www.elba.bioflux.com.ro](http://www.elba.bioflux.com.ro) Porcine Research [www.porc.bioflux.com.ro](http://www.porc.bioflux.com.ro) Rabbit Genetics [www.rg.bioflux.com.ro](http://www.rg.bioflux.com.ro) ProEnvironment Promediu <http://journals.usamvcluj.ro/index.php/promediu> Poeciliid Research [www.pr.bioflux.com.ro](http://www.pr.bioflux.com.ro)

[Quoted text hidden]

---

**2 attachments**

 **Manuscript.docx**  
242K

 **Submission letter AACL Bioflux\_AM.doc**  
61K



Abdul Malik <abdulmalik@unm.ac.id>

---

## Submission of the manuscript research paper

---

**Abdul Malik** <abdulmalik@unm.ac.id>

Fri, May 31, 2019 at 2:37 AM

To: gavriloaie ionel claudiu <ionelclaudiu@yahoo.com>

Dear  
Claudiu Gavrioloaie, PhD  
Editor in chief of ACL Bioflux

Thank you very much for your information. As mentioned in your journal web regarding manuscript processing fee, I would like to inform that I am willing to pay 300 USD for manuscript processing fee with priority.

Sincerely yours,  
Abdul Malik

[Quoted text hidden]



Abdul Malik <abdulmalik@unm.ac.id>

---

## Submission of the manuscript research paper

---

**gavriloaie ionel claudiu** <ionelclaudiu@yahoo.com>  
Reply-To: gavriloaie ionel claudiu <ionelclaudiu@yahoo.com>  
To: Abdul Malik <abdulmalik@unm.ac.id>

Sat, Jun 1, 2019 at 5:51 AM

Dear Dr. Abdul Malik,

I noted your request. So, we will try to speed up the preliminary evaluation so you can have then the complete review in the shortest time.  
Thank you!

Yours,  
Claudiu Gavriolaie

[Quoted text hidden]



Abdul Malik <abdulmalik@unm.ac.id>

---

## Submission of the manuscript research paper

---

Abdul Malik <abdulmalik@unm.ac.id>

Sun, Aug 4, 2019 at 12:16 PM

To: gavriloaie ionel claudiu <ionelclaudiu@yahoo.com>

Dear Claudiu Gavrioloaie, PhD  
editor-in-chief AACL Bioflux journal

We would like to know the status and/or progress of our manuscript paper with the title  
**"Biodiversity assessment of mangrove vegetation for the sustainability of ecotourism area in West Sulawesi Indonesia"** since submission on May 25, 2019, in your journal (AACL-Bioflux).

Sincerely yours,  
Abdul Malik  
Corresponding author.

On Fri, May 31, 2019 at 12:53 AM gavriloaie ionel claudiu <ionelclaudiu@yahoo.com> wrote:

[Quoted text hidden]

[Quoted text hidden]

---

**Submission of the manuscript research paper**

---

**gavriloaie ionel claudiu** <ionelclaudiu@yahoo.com>  
To: Abdul Malik <abdulmalik@unm.ac.id>

Tue, Aug 6, 2019 at 1:07 AM

Dear Dr. Abdul Malik,

I am sending you the complete review for your paper.  
There are few minor comments to be addressed. For that, work only in attached document and **use a bright color to highlight all the changes you will do in text.**

Regarding the processing fee of 250 USD + bank taxes, pay it by using only one of the variants below. After the payment, send me a scan copy of the bank document.  
Thank you very much!

Cordially yours,  
Claudiu Gavriloaie

**1st variant of payment:**

Beneficiary: Bioflux SRL

City: Cluj-Napoca,

Country: Romania, European Union;

SWIFT CODE of the bank: BTRLRO22

Account (IBAN):

USD: **RO68BTRL**01302202L28614XX (Cluj-Napoca)EURO: **RO19BTRL**01304202L28614XX (Cluj-Napoca)

Bank:

BANCA TRANSILVANIA

**Important!** When bank transfer is used to pay a publication fee, please pay attention to which modality of payment you chose! There are three options: Ben, Our, Us.

Use always "Us" option (meaning that all the bank transfer costs are in your concern/ authors support them and not the publisher). If you forgot to mention that and you let the bank to set "Ben" or "Our" options, we receive about 200 usd instead of 250 usd. Such payments are not valid and you need to pay again for the rest of the sum and one more transfer charge.

**2nd variant of payment:**

via Paypal. If you can process such a payment we can start the online form. For this variant, please contact dr. Petrescu-Mag ([zoobiomag2004@yahoo.com](mailto:zoobiomag2004@yahoo.com)).

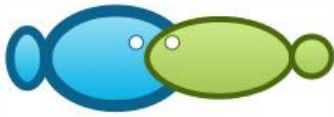
[Quoted text hidden]

---

**2 attachments**

 **Malik A. et al - Letter of acceptance.pdf**  
76K

 **Malik A. et al - review & comments.doc**  
286K



## Biodiversity assessment of mangrove vegetation for the sustainability of ecotourism area in West Sulawesi Indonesia

<sup>1</sup>Abdul Malik, <sup>2</sup>Abd. Rahim, <sup>1</sup>Uca Sideng, <sup>3</sup>Abdul Rasyid, <sup>1</sup>Jamaluddin Jumaddin

<sup>1</sup> Department of Geography, Faculty of Mathematics and Natural Sciences, Universitas Negeri Makassar, Makassar, Indonesia 90224; <sup>2</sup> Study program of Economic Development, Faculty of Economic, Universitas Negeri Makassar, Makassar, Indonesia 90222; <sup>3</sup> Department of Marine Science, Faculty of Marine Science and Fisheries, Universitas Hasanuddin (UNHAS), Makassar, Indonesia 90245. Corresponding author: A. Malik, [abdulmalik@unm.ac.id](mailto:abdulmalik@unm.ac.id)

**Abstract.** Sustainability of mangrove ecotourism areas largely depends on the existence of biodiversity. However, a threat to mangrove biodiversity due to mangrove wood cutting for firewood and house materials, and especially conversion into aquaculture ponds still occurs. The objective of this study is to assess the biodiversity of mangrove vegetation for the sustainability of ecotourism area in West Sulawesi Indonesia. The mangroves of Bebanga village, West Sulawesi province represent an ecotourism area that has not been subject to studies about biodiversity for their sustainability. This ecotourism area provides tourist attractions such as mangrove tracking, mangrove learning and rehabilitation, fishing, bird watching, spots for pre-wedding and selfie photoshoot, culinary, and gazebo with an ocean view for relaxation of tourists. We implemented a line transect method for mangrove vegetation survey and used vegetation analysis equations to calculate mangrove density, frequency, coverage and Important Value Index (IVI). In addition, we have used the Shannon-Wiener index for assessing mangrove diversity. Seven species were found namely *Avicennia marina*, *Bruguiera gymnorhiza*, *Rhizophora mucronata*, *Rhizophora stylosa*, *Sonneratia alba*, *Sonneratia caseolaris*, and *Xylocarpus granatum*. However, mangrove area was dominated by *R. mucronata* and most mangroves in sapling growth level. In addition, relative density, frequency and coverage of mangroves at all regeneration were below 56% and found at moderate diversity. These findings suggest the biodiversity of mangrove vegetation has decreased and it will become a potential threat for tourist attractions and tourism business. Therefore, improving mangroves conservation and rehabilitation should be considered for maintaining and improving biodiversity for the sustainability of ecotourism area.

**Key Words:** biodiversity, mangrove, loss of biodiversity, ecotourism, West Sulawesi.

**Introduction.** Ecotourism is a responsible journey to natural areas that conserve the environment, supporting education, and improve the welfare of the local people and alleviate poverty (Wood 2002). Ecotourism is interesting for tourists in the recent decades due to it gives opportunities to tourists to learn the environment, local culture, and contribute to preserving biodiversity, and economic development of communities around ecotourism area (Mondino & Beery 2018). The growing of ecotourism has a significant contribution to the tourism industry in Indonesia and other Southeast Asian countries (Ly & Bauer 2014).

The biodiversity is vital to human development because it provides goods and services for contributing to human well-being (at least 40% of the world's economy is based on biological products and ecosystem services) (WEHAB 2002). Biodiversity and ecosystem services are close relationships both in term impact and dependency (MEA 2005) and often positive (Cardinale et al 2006; Harrison et al 2014). Many varieties of tourism depend directly on biodiversity and ecosystem services such as ecotourism, agri-tourism, wellness tourism, adventure tourism, etc. (EU B&B Platform 2010). The biodiversity plays an important role as a tourist attraction, resources for consumption

Commented [J1]: 'area' may be deleted

Commented [indra2]: write the full name

Commented [indra3]: may be Economics?

Commented [J4]: area may be deleted

Commented [indra5]: please rephrase, it is confusing



goods, natural component to support environmental survival and aesthetics (Hakim 2017). Habibullah et al (2016) point out that the tourism industry mostly depends on biodiversity and no tourism activities will sustain without rich biodiversity. However, loss of biodiversity on a global scale becomes increasing than that of natural extinction. It is due to anthropogenic activities such as unsustainable use of natural resources, land conversion development and the introduction of invasive species (Christ et al 2003). MEA (2005) point out that human activities threatened the sustainability of biodiversity and ecosystem services for future generations, and recognized as one of the foremost environmental challenges internationally (WTO 2010)

Mangrove is one of the important coastal ecosystems in the tropical and subtropical regions of the world (Giri et al 2011). They are providing a variety of products (e.g. fish, crab, shrimp, and timber and non-timber products) and essential ecosystem services (e.g. carbon sequestration, coastal protection, saltwater intrusion prevention, habitat for marine biota and ecotourism) that contribute significantly to the livelihood of local communities (Vo et al 2015; Malik et al 2015a). However, over the recent decades, communities around the mangrove area have been highly dependent upon mangroves for many purposes and have generated high levels of exploitation and deforestation (Kusmana 2014; Malik et al 2017).

In Bebanga village, West Sulawesi province, the mangroves use for ecotourism area has been expanding since 2013. This ecotourism area provides tourist attractions such as mangrove tracking, mangrove learning and rehabilitation, fishing, bird watching, spots for pre-wedding and selfie photoshoot, culinary, and gazebo with an ocean view for relaxation of tourists (Zain 2014; Malik et al 2018). However, mangrove woodcutting for firewood and house materials and mainly the expansion of aquaculture pond is still happening and not only decrease areas of mangrove but also often cause negative impacts to the biodiversity such as the species composition, structure, and diversity. Malik et al (2015b) reported that exploitation of mangrove in South Sulawesi has a consequence to decline mangrove areas and cause loss of biodiversity. Malik et al (2018) demonstrated that excessive use of mangroves for firewood and house materials and clearing for the creation of aquaculture ponds have become the driving force behind the degradation and deforestation of mangrove in West Sulawesi. Mangroves have decreased from 95 to 82 ha, whereas aquaculture ponds increased from 205 ha to 212 ha during 2013-2018 (Malik et al 2018).

The status of mangrove biodiversity requires to be communicated to the public, policy-makers, and businessmen in the tourism industry. The contribution of biodiversity knowledge is essential in planning, implementation, and monitoring in conservation for the sustainability of mangrove ecotourism area. The loss of mangrove biodiversity that has correspondence to human activities can be measured through degradation of quantity and quality of the forest and a growing number of species that are threatened with the disappearing or which have already disappeared (WTO 2010). However, this topic is rarely applied in research and investigations related to the sustainability of ecotourism area in Indonesia and other developing countries (Hakim 2017). There are limited empirical case studies on biodiversity in mangrove ecotourism studies. Therefore, the objective of this study is to assess the biodiversity of mangrove vegetation for the sustainability of ecotourism area of West Sulawesi province, Indonesia. The mangrove ecotourism area in Bebanga village is appropriate to the case study as we hypothesized that the vegetation structure and diversity of mangrove in this area being experienced degradation due to mangrove exploitation for firewood, house materials and primary conversion into aquaculture ponds.

## Material and Method

**Description of the study sites.** This study was conducted in the mangrove ecotourism area of Bebanga Village, Kalukku District, Mamuju Regency, West Sulawesi Province. The area is located at latitude 2°35'7.88" - 2°44'8.62" and longitude 118°58'32.04" - 119° 3'15.74" (Figure 1). The location is about 23 km from the capital of West Sulawesi, Mamuju city.

Commented [indra6]: to be added to the references list

Commented [indra7]: 2014 or 2015?

Commented [indra8]: in South Sulawesi?

Commented [indra9]: 23 km to which direction?

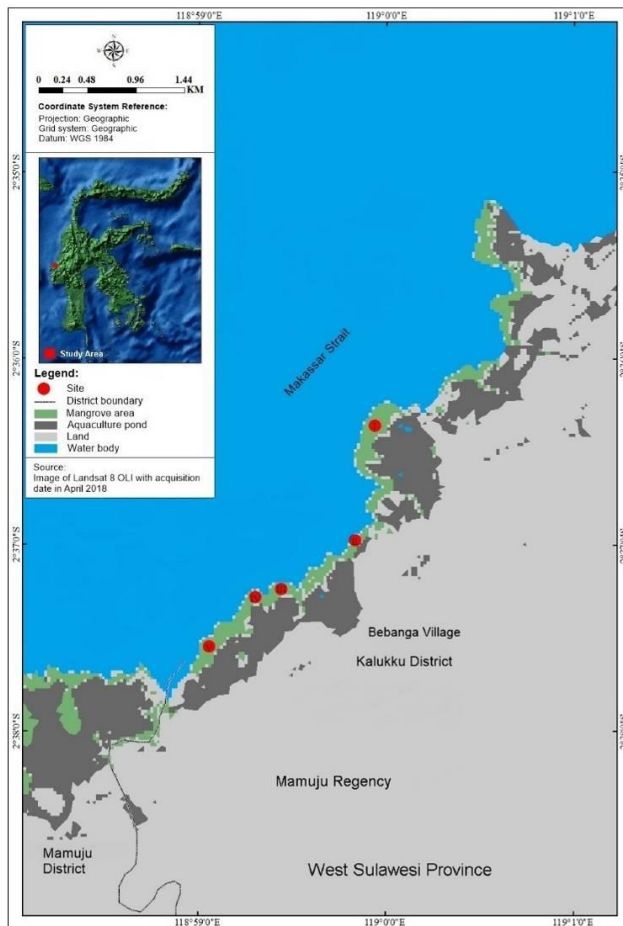


Figure 1. Study area: Bebanga village, Kalukku District, Mamuju Regency, West South Sulawesi Province, and transect locations at five sites.

The village covers 88.42 km<sup>2</sup> and consists of 17 sub-villages. The area borders Makassar Strait to the north, Mamuju District to the south and west, and Sinyonyoi village to the south and east. The population was 8,174 people in 2016 with a population density of 92 people per km<sup>2</sup> (BPS Kabupaten Mamuju 2017). Most of the population is living in this coastal area working as fishermen and farmers (BPS Kabupaten Mamuju 2017). In addition, five sampling sites were selected in this study (Figure 1). The sampling sites were chosen due to an appropriate case study as an area for mangrove ecotourism but remain unwell in managing and under considerable threat.

**Data collection.** Vegetation survey for measuring of mangrove composition, structure and diversity were undertaken in July 2018 using a line-transect method. We installed a line transect at five sites (Figure 1) from the waterfronts towards the landward margin with the length depending on the thickness of the mangrove patch (English et al 1997; Malik et al 2015b). A total of 15 plots were established using a measuring tape and plastic ropes and marked the position using Global Positioning System (GPS), covered by five sites (3 plots per site) along 3.6 km coast length. The sizes for each plot were 10 m

Commented [indra10]: add the numbers from 1 to 5 for the locations

x 10 m for mature tree level, 5 m x 5 m for sapling level, and 2 m x 2 m for the seedling level (English et al 1997; Malik et al 2015b). The distance between plots was around 30 m depending on the specific vegetation characteristics and the landscape (Malik et al 2015b). In each plot, the species name and a total number of mangrove trees, saplings and seedlings were identified and counted using a tally counter. In addition, all stem diameter at breast height (DBH) of trees ( $\geq 5$  cm DBH) and the DBH 1.3 m above the soil surface or 30 cm above the highest prop root for *Rhizophora* spp. were measured (Malik et al 2015b).

**Data analysis.** We used the following equations (1-6) to calculate the density, relative density, frequency, relative frequency, coverage, and relative coverage, respectively (Malik et al 2015b):

$$D_i = \frac{n_i}{A} \quad (1)$$

$$RD_i = \frac{n_i}{\sum n} \times 100 \% \quad (2)$$

where,  $D_i$ : density of species  $i$  (tree/ha);  $RD_i$ : relative density of species  $i$  (%);  $n_i$ : number of counts per species  $i$ ,  $\sum n$ : the total number of counts for all species,  $A$ : total area of the sample observed ( $m^2$ ).

$$F_i = \frac{P_i}{\sum p} \quad (3)$$

$$FR_i = \frac{F_i}{\sum F} \times 100 \% \quad (4)$$

where,  $F_i$ : frequency of species  $i$ ;  $FR_i$ : relative frequency of species  $i$  (%);  $p_i$ : number of the plots where species  $i$  occurs;  $\sum F$ : the total number of occurrences for all species;  $\sum p$ : the total number of plots observed.

$$C_i = \frac{BA}{A} \quad (5)$$

$$RC_i = \frac{C_i}{\sum C} \times 100 \% \quad (6)$$

where,  $C_i$ : areal coverage for species  $i$ ;  $BA$ :  $\pi DBH^2 / 4$ , where  $BA$  = Basal Area (cm) and  $DBH$  = Diameter at Breast Height (cm);  $A$ : total area of the plot ( $m^2$ );  $\sum C$ : total area coverage for all species;  $RC_i$ : relative coverage of species  $i$  (%).

Furthermore, we summed the value of relative density, relative frequency, and relative coverage (equation 7) to determine the importance value index (IVI) that express the dominance level of individual mangrove species (Malik et al 2015b):

$$IVI = RD + RF + RC \quad (7)$$

where the value of IVI between 0 and 300.

We implemented the Index of Shannon-Wiener (equation 8) for calculating the diversity of mangrove species (Ludwig & Reynolds 1988):

$$H' = - \sum P_i \ln (P_i); P_i = (n_i/N) \quad (8)$$

The range of  $H'$  between 0 to  $> 3$  ( $< 1$ , low diversity;  $1 < H' \leq 3$ , moderate diversity;  $H' > 3$ , high diversity), where  $n_i$  is a number of individual species  $i$  and  $N$  is the total number of species.

## Results

**Mangrove vegetation composition and structure.** A total of 2750 standing live mangrove trees recorded at 15 plots of five study sites, containing mature trees 851,

saplings 747 and seedlings 1152 (Table 2). We identified seven species inhabiting this area, including *Avicennia marina*, *Bruguiera gymnorrhiza*, *Rhizophora mucronata*, *Rhizophora stylosa*, *Sonneratia alba*, *Sonneratia caseolaris*, and *Xylocarpus granatum*. These species belong to four families, including *Acanthaceae*, *Rhizophoraceae*, *Lythraceae*, and *Meliaceae*. In each site, the number of species was recorded between four and five, but *B. gymnorrhiza*, *R. mucronata*, and *R. stylosa* were found at all sites (Table 1).

Table 1

List of mangrove species identified

Family name	Species name	Local name	Sampling site				
			I	II	III	IV	V
Acanthaceae	<i>A. marina</i>	Pajapi	✓	-	-	✓	✓
Rhizophoraceae	<i>B. gymnorrhiza</i>	Tanjang	✓	✓	✓	✓	-
Rhizophoraceae	<i>R. mucronata</i>	Pangkang	✓	✓	✓	✓	✓
Rhizophoraceae	<i>R. stylosa</i>	Pangkang	✓	✓	✓	✓	✓
Lythraceae	<i>S. alba</i>	Padada	✓	✓	-	✓	✓
Lythraceae	<i>S. caseolaris</i>	Padada	-	-	✓	-	-
Meliaceae	<i>X. granatum</i>	Buli cella	-	-	✓	-	-
Number of species			5	4	5	5	4

✓ = present; - = not present

The density of *R. mucronata* was the highest at all growth levels of mangrove, followed by *S. alba* for mature trees, and *R. stylosa* for saplings and seedlings. The frequency of mangrove was dominated by *R. mucronata* and *R. stylosa* at all growth stages, followed by *B. gymnorrhiza* and *S. alba*. The coverage of mangrove was dominated by *B. gymnorrhiza*, followed by *R. mucronata*. Furthermore, the IVI shown *R. mucronata* was the dominant species at all growth levels, followed by *S. alba* for mature species, and *R. stylosa* for saplings and seedlings (Table 2).

Table 2

Density, frequency, coverage and important value index (IVI) of mangrove species

Growth level	Species	ni	D	RD	F	RF	C	RC	IVI
Mature tree	<i>A. marina</i>	36	0.02	4	3	13	3.52	8	26
	<i>B. gymnorrhiza</i>	53	0.04	6	4	17	8.75	21	44
	<i>R. mucronata</i>	480	0.32	56	5	22	6.53	15	94
	<i>R. stylosa</i>	102	0.07	12	5	22	2.35	6	39
	<i>S. alba</i>	118	0.08	14	4	17	8	19	50
	<i>S. caseolaris</i>	52	0.03	6	1	4	7.97	19	29
	<i>X. granatum</i>	10	0.01	1	1	4	5.06	12	18
Total		851	0.57	100	23	100	42	10	300
Sapling	<i>A. marina</i>	47	0.03	6	3	13	-	-	19
	<i>B. gymnorrhiza</i>	83	0.06	11	4	17	-	-	29
	<i>R. mucronata</i>	313	0.21	42	5	22	-	-	64
	<i>R. stylosa</i>	162	0.11	22	5	22	-	-	43
	<i>S. alba</i>	79	0.05	11	4	17	-	-	28
	<i>S. caseolaris</i>	34	0.02	5	1	4	-	-	9
	<i>X. granatum</i>	29	0.02	4	1	4	-	-	8
Total		747	0.50	100	23	100	-	-	200
Seedling	<i>A. marina</i>	88	0.06	8	3	13	-	-	21
	<i>B. gymnorrhiza</i>	116	0.08	10	4	17	-	-	27
	<i>R. mucronata</i>	512	0.34	44	5	22	-	-	66
	<i>R. stylosa</i>	244	0.16	21	5	22	-	-	43
	<i>S. alba</i>	124	0.08	11	4	17	-	-	28
	<i>S. caseolaris</i>	42	0.03	4	1	4	-	-	8
	<i>X. granatum</i>	26	0.02	2	1	4	-	-	7
Total		1152	0.77	100	23	100	-	-	200

D = density; RD = relative density; F = frequency; RF = relative frequency; C = coverage; RC = relative coverage; IVI = important value index.

Commented [indra11]: it gives a total of 99 instead 100

Commented [indra12]: it gives 99

Commented [indra13]: it gives 101

Commented [indra14]: it gives 99

Commented [indra15]: it gives 99

**Mangrove diversity.** The highest index value of mangrove vegetation diversity was found at sapling level (1.62), followed by seedling (1.56) (Figure 2). The mangrove diversity at all growth levels was a moderate category.

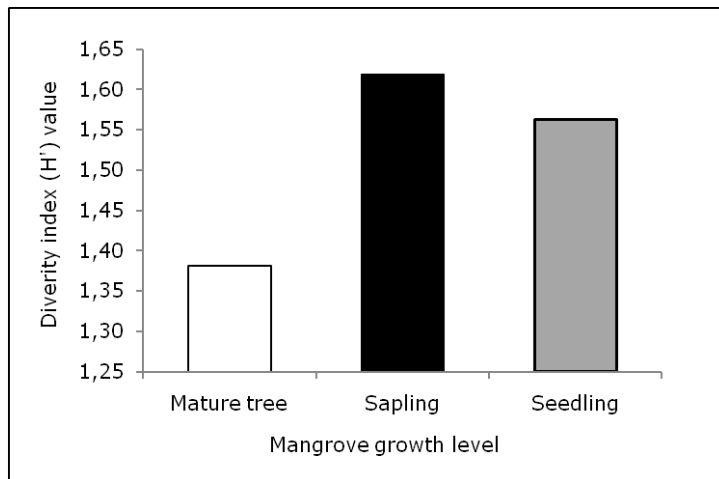


Figure 2. Diversity index (H') value of mangrove in each growth level.

**Discussion.** This study presents a biodiversity assessment of mangrove vegetation from mangrove ecotourism area in Bebanga Village, West Sulawesi. The composition of true mangrove species represented 26% and 16% of the total mangrove species in Sulawesi Island 27 species and Indonesia 43 species, respectively (Kusmana 1993) distributed in this area. Nurkin (1994) reported that the coastal area of Mamuju Regency South Sulawesi (after 2005, Mamuju Regency area was covered by the administration area of West Sulawesi province) contained 12 true mangrove species. It is demonstrating that the mangrove species number decrease over the last two decades. The species composition reduction corresponds to a similar study in South Sulawesi as reported by Malik et al (2015b). In addition, the relative density, frequency, and coverage of mangroves were below 56%, which means there are many mangrove areas and biodiversity in alarming rate status (Table 2). Pickering & Hill (2007) reviewed that impacts of vegetation cover reduction damages to seedlings and change in species composition. Malik & Rahim (2017) demonstrated the annual rate mangrove decreased between 1 and 5% in Sulawesi Island and impacted to mangrove biodiversity (Malik et al 2015b). Most of the mangrove dominated by saplings and seedlings growth level in this area (Table 1), indicating a mangrove area in regenerating status after a disturbance.

Although policy intervention in mangrove conservation at the national, regional and local levels by Indonesian government has improved in the last years (Richards & Friess 2016), unsustainable using of this forest still happens (Malik et al 2018). The rehabilitation programs for preserving of mangrove area, preventing coastal abrasion, and improving fish capture production has introduced in this area in the past years (Abu 2018), however, no great effort was put to increase the diversity of mangrove (Figure 2). It is due to mangrove re-planting merely focused on a single species of *Rhizophora*, resulting in the species become dominant in this area (Table 2). This result confirms the findings of Ellison (2000) and Primavera & Esteban (2008) who were reported that mangrove rehabilitation in Southeast Asian countries has mainly concentrated on planting one or two species, especially *Rhizophora* or red mangrove.

WTO (2010) stated the biodiversity is a direct attraction of nature-based tourism products, such as tourism in protected and ecotourism areas. However, the loss of biodiversity due to human activities is seen as a potential threat to tourist attractions in this mangrove ecotourism area. Malik et al (2018) reported that loss of mangrove

Commented [indra16]: on the left side, replace “,” with “.” for all the values, according to English rules. So, instead of 1,65 you should have 1.65; 1,60 - 1.60 and so on....

Commented [indra17]: wrong grammar

vegetation area has caused fauna that inhabited in this mangrove ecotourism area in low diversity, consequential difficult to found mammals (such as monkey and bat), while bird and reptile were found to be only 4 species (bird: *Collocalia* sp., *Ciconia* sp., *Halycon* sp., and *Egretta* sp.; reptile: *Varanus* sp., *Dasia* sp., *Cerberus* sp., and *Chrysopelea* sp.). Hakim (2017) demonstrated that the change of habitat, degradation, and deforestation due to conversion into other land uses has consequences to reduce reproduction success and decline population survival which may lead to species and population disappear. Many wildlife, such as mammals, reptiles, and birds inhabit in mangrove areas will seek refuge and new habitat. In mangrove ecotourism area of Wonorejo, Surabaya, East Java, where the habitat of the long-tailed macaque (*Macaca fascicularis*), for example, mangrove clearing for aquaculture ponds and settlements have an impact to decreased this species population and them left their habitat to find food in the residential area (Anggraeni et al 2013). Proboscis monkey (*Nasalis larvatus*) is one of the protected endemic species and tourism icon in mangrove conservation areas in East Kalimantan, is being threatened also due to a variety of land use conversions, such as settlements, fish ponds, agriculture lands, and road (Atmoko 2011).

Furthermore, the loss of biodiversity is not only threat to species that inhabit mangrove ecotourism area but also tourism business. When tourist attractions in mangrove ecotourism area threatened, it has a potential decrease in tourist interest to visit the ecotourism areas. The business of tourism services such as transportation, accommodation (e.g. homestay), food and restaurants, and so on will be threatened also and subsequently, has a negative consequence to businessmen and community livelihoods who are involved in the tourism business (Habibullah et al 2016). Malik et al (2017) calculated the potential economic loss of mangrove ecotourism business services on the basis on travel cost method in Sulawesi if mangrove lost reach 1.96 billion Rupiah/year/1000 visits or 145 thousand US Dollar/year/1000 visits (exchange rate 1 US Dollar = 13,500 Rupiah).

Since the sustainability of mangrove ecotourism area and tourism business highly depend on the existence of biodiversity, therefore it is imperative to reduce the loss of biodiversity. More attention of stakeholders and policy-makers to integrate biodiversity consideration in decision-making relating to tourism by preserve of intact mangrove and restore mangrove disturbed areas are important actions. Malik et al (2015a) report the aquaculture businesses frequently abandon ponds as soon as revenue decline (often after only five years) in Sulawesi Island. Therefore, the restoration of abandoned ponds by re-planting mangrove with a variety of species should be considered as a viable option for improving mangrove biodiversity. Brown et al (2014) provided empirical evidence that mangrove restoration project for 43 ha of abandoned ponds has been successful to increased mangrove biodiversity in Tanakeke Island of South Sulawesi by 2171 tree/ha and 3 species within 32 months after restoration in 2010. In addition, conserving biodiversity cannot be separated from economic challenges. Thus, a balance between mangrove wood consumption through selection cutting and re-planting area on mangrove harvested, and aquaculture revitalization program to prevent the expansion of new ponds should be considered as a win-win solution.

**Conclusions.** This study presented an assessment of mangrove biodiversity for the sustainability of ecotourism area in Bebanga village, West Sulawesi province, Indonesia. Biodiversity of mangrove has decreased in this area due to disturbance from wood cutting and mainly from aquaculture pond expansions. It has a potential threat to the tourist attractions in mangrove ecotourism area and tourism business. More attention from stakeholders and decision-makers is required to conserve and restore mangrove areas lost to over-exploitation in this area. It is a high priority to maintain and possibly increase mangrove biodiversity for the sustainability of ecotourism area.

**Acknowledgements.** We would like to thank the Ministry of Research, Technology and Higher Education of the Republic of Indonesia for the financial support through Penelitian Unggulan Terapan Perguruan Tinggi (PTUPT) scheme (Grant number: 127/UN36.9/PL/2018). We also thank the Research Center of Universitas Negeri

Makassar, Department of Geography Universitas Negeri Makassar, and the Governments of West Sulawesi and Mamuju Regency for their support of this research.

## References

- Abu A., 2018 [Gerakan rehabilitasi hutan mangrove saluleang oleh team RLA dan pemprov sulbar]. Available at: <http://lensapena.net/gerakan-rehabilitasi-hutan-mangrove-saluleang-oleh-team-rla-dan-pemprov-sulbar/>. Accessed: November, 2018. [in Indonesian]
- Anggraeni I. W. S, Rinaldi D., Mardiasuti A., 2013 Population and habitat of long-tailed macaque (*Macaca fascicularis*) in Wonorejo mangrove ecotourism, Surabaya. *Bonoworo Wetlands* 3:101-113.
- Atmoko T., 2011 Conservation of proboscis monkey and their isolated habitat in Kuala Samboja, East Kalimantan. Paper session presentation at The First International Conference of Indonesian Forestry Researchers (INAFOR), Bogor. Available at: <https://www.researchgate.net/>. Accessed: December, 2018.
- BPS Kabupaten Mamuju, 2017 [Kabupaten Mamuju dalam angka 2017. Badan Pusat Statistik (BPS) Kabupaten Mamuju]. Available at: <https://mamujukab.bps.go.id/>. 2017. Accessed: November, 2018. [in Indonesian]
- Brown B., Fadillah R., Nurdin Y., Soulsby I., Ahmad R., 2014 Case study: community based ecological mangrove rehabilitation (CBEMR) in Indonesia. *SAPIENS* 7:1-12.
- Cardinale B. J., Srivastava D. S., Duffy J. E., Wright J. P., Downing A. L., Sankaran M., Jouseau C., 2006 Effects of biodiversity on the functioning of trophic groups and ecosystems. *Nature* 443(7114):989.
- Carugati L., Gatto B., Rastelli E., Martire M.L., Coral C., Greco S., Danovaro R., 2018 Impact of mangrove forests degradation on biodiversity and ecosystem functioning. *Scientific Reports* 8: 13298.
- Christ C. C., Hillel O., Matus S., Sweeting J., 2003 Tourism and biodiversity: mapping tourism's global footprint. Conservation International and UNEP, Washington, DC.
- Ellison A. M., 2000 Mangrove restoration: do we know enough? *Restoration Ecology* 8: 219-229.
- English S., Wilkinson C., Baker V., 2007 Survey manual for tropical marine resources. 2<sup>nd</sup> edition, Australian Institute of Marine Science, Townsville, pp. 119-195.
- EU B&B Platform, 2010 Tourism sector and biodiversity conservation: best practice benchmarking. Outcome of a workshop by the European Union Business and Biodiversity Platform. Available at: <http://ec.europa.eu/environment/biodiversity/business/>. Accessed: December, 2018.
- Giri C., Oching E., Tieszen L. L., Zhu Z., Singh A., Loveland T., Masek J., Duke N., 2011 Status and distribution of mangrove forests of the world using earth observation satellite data. *Global Ecology Biogeography* 20:154-159.
- Habibullah M. S., Din B. H., Chong C. W., Radam A., 2016 Tourism and biodiversity loss: implications for business sustainability. *Procedia Economics and Finance* 35:166-172.
- Hakim L., 2017 Managing biodiversity for a competitive ecotourism industry in tropical developing countries: new opportunities in biological fields. *AIP Conference Proceedings* 1908(1):030008.
- Harrison P. A., Berry P. M., Simpson G., Haslett J. R., Blicharska M., Bucur M., Dunford R., Egoh B., Garcia-Liorente M., Geamana N., Geertsema W., Lommelen E., Meiresonne L., Turkelboom F., 2014 Linkages between biodiversity attributes and ecosystem services: a systematic review. *Ecosystem Services* 9:191-203.
- Kusmana C., 1993 The current status of mangrove forest management in Indonesia. Department of Silviculture, Faculty of Forestry, Bogor Agricultural University: Bogor, Indonesia.
- Kusmana C., 2015 Distribution and current status of mangrove forests in Indonesia. In: *Mangrove ecosystems of Asia*. Faridah-Hanum I., Latiff A., Hakeem K. R., Ozturk M. (eds), Springer, New York, pp. 37-60.
- Ludwig J. A., Reynolds J. F., 1998 Statistical ecology. A primer on methods and

Commented [indra18]: not quoted in text

Commented [indra19]: pages

Commented [indra20]: is this the original title? Or the paper was initially written in Indonesian?

Also provide the pages

Commented [indra21]: 2014 or 2015?



- computing. John Wiley and Sons, New York.
- Ly T. P., Bauer T., 2014 Ecotourism in mainland Southeast Asia: theory and practice. *Tourism, Leisure and Global Change* 1:61-80.
- Malik A., Fensholt R., Mertz O., 2015a Economic valuation of mangroves for comparison with commercial aquaculture in South Sulawesi, Indonesia. *Forests* 6:3028-3304.
- Malik A., Fensholt R., Mertz O., 2015b Mangrove exploitation effects on biodiversity and ecosystem services. *Biodiversity and Conservation* 24:3543-3557.
- Malik A., Rahim A., 2017 Assessment of potentials for payment for mangrove ecosystem services in South Sulawesi Indonesia - Final Report DIPA BIOTROP 2017. Southeast Asian Regional Centre for Tropical Biology (SEAMEO BIOTROP), Bogor, West Java.
- Malik A., Mertz O., Fensholt R., 2017 Mangrove forest decline: consequences for livelihoods and environment in South Sulawesi. *Regional Environmental Change* 17: 157-169.
- Malik A., Rahim A., Sideng U., 2018 Strategi dan desain pengembangan kawasan ekowisata mangrove di Kelurahan Bebanga, Kecamatan Kalukku, Kabupaten Mamuju - Laporan Akhir Penelitian Terapan Unggulan Perguruan Tinggi (PTUPT), Universitas Negeri Makassar. [in Indonesian]
- MEA, 2005 Ecosystem and human well-being: synthesis. Island Press, Washington DC.
- Mondino E., Beery T., 2018 Ecotourism as a learning tool for sustainable development. The case of Monviso Transboundary Biosphere Reserve, Italy. *Journal of Ecotourism* 18:1-15.
- Nurkin B., 1994 Degradation of mangrove forests in South Sulawesi, Indonesia. *Hydrobiologia* 285:271-276.
- Pickering C. M., Hill W., 2007 Impacts of recreation and tourism on plant biodiversity and vegetation in protected areas in Australia. *Journal of Environmental Management* 85:791-800.
- Primavera J. H., Esteban J. M. A., 2008 A review of mangrove rehabilitation in the Philippines: successes, failures and future prospects. *Wetlands Ecology Management* 16:345-358.
- Richards D. R., Friess D. A., 2016 Rates and drivers of mangrove deforestation in Southeast Asia, 2000-2012. *Proceedings of the National Academy of Sciences of the USA* 113:344-349.
- WEHAB, 2002 A framework for action on biodiversity and ecosystem management, water, energy, health, agriculture and biodiversity. Working Group Report, contribution to the World Summit on Sustainable Development, Johannesburg, South Africa, 26 August - 4 September 2002. United Nations, New York.
- Wood M., 2002 Ecotourism: principles, practices, and policies for sustainability. UNEP.
- WTO, 2010 Tourism and biodiversity - achieving common goals towards sustainability. UNWTO, Madrid, Spain.
- Zain Z., 2014 [Objek wisata hutan bakau (mangrove) kota Mamuju, Sulawesi Barat]. Available at: <http://kompadansamandar.blogspot.co.id/2014/05/objek-wisata-hutan-bakau-mangrove-kota.html>. Accessed: April, 2016. [in Indonesian]

Received: 25 May 2019. Accepted: 23 July 2019. Published online: xx August 2019.  
 Authors:

**Add here the complete name of each author, in order. Then, for each one of them, provide the complete name of the institution, the street, number, postal code, city, country and e-mail address.**

This is an open-access article distributed under the terms of the Creative Commons Attribution License, which permits unrestricted use, distribution and reproduction in any medium, provided the original author and source are credited.

How to cite this article:

Malik A., Rahim A., Sideng U., Rasyid A., Jumaddin J., 2019 Biodiversity assessment of mangrove vegetation for the sustainability of ecotourism area in West Sulawesi Indonesia. *AAFL Bioflux* 12(4):xxx-xxx.

Commented [indra22]: pages

Commented [indra23]: pages

Commented [indra24]: first, clearly delimitate the title. Then, put the title between [title...title].

Finally, provide the pages too

Commented [indra25]: pages

Commented [indra26]: if possible, provide the pages too

Commented [indra27]: provide the pages too

Commented [indra28]: pages





Abdul Malik &lt;abdulmalik@unm.ac.id&gt;

---

## Submission of the manuscript research paper

---

**Abdul Malik** <abdulmalik@unm.ac.id>

Thu, Aug 8, 2019 at 7:41 PM

To: gavriloaie ionel claudiu &lt;ionelclaudiu@yahoo.com&gt;

Dear Claudiu Gavriloaie  
Editor of AACL Bioflus

Thank you very much for accepting the manuscript for publishing in your journal, and thanks also for a few of the reviewer's comments and suggestions to the manuscript. We have revised the manuscript according to the reviewer's comments and suggestions (attached revision version of the manuscript).

Regarding the processing fee, we have transferred 250 USD, and we have paid for all the bank transfer cost through Bank BNI 46 here so your bank account has received full 250 USD. Bank BNI 46 has a version for the modality of payment not "us" but "our" for all bank transfer cost that pays by the sender. We have asked for this to the bank officer here (Attached the scan copy of bank document).

Best regards,  
Abdul Malik  
Corresponding author

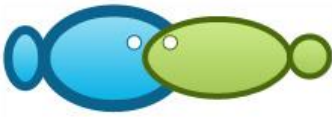
[Quoted text hidden]

---

### 2 attachments

 **Malik A. et al - Revised version with track changes.doc**  
600K

 **Receipt payment transfer\_Abdul Malik.pdf**  
1322K



## Biodiversity assessment of mangrove vegetation for the sustainability of ecotourism ~~area~~ in West Sulawesi Indonesia

<sup>1</sup>Abdul Malik, <sup>2</sup>Abdul Rahim, <sup>1</sup>Uca Sideng, <sup>3</sup>Abdul Rasyid, <sup>1</sup>Jamaluddin Jumaddin

<sup>1</sup> Department of Geography, Faculty of Mathematics and Natural Sciences, Universitas Negeri Makassar, Makassar, Indonesia 90224; <sup>2</sup> Study program of Economic Development, Faculty of Economics, Universitas Negeri Makassar, Makassar, Indonesia 90222; <sup>3</sup> Department of Marine Science, Faculty of Marine Science and Fisheries, Universitas Hasanuddin (UNHAS), Makassar, Indonesia 90245. Corresponding author: A. Malik, abdulmalik@unm.ac.id

**Abstract.** Sustainability of mangrove ecotourism areas largely depends on the existence of biodiversity. However, a threat to mangrove biodiversity due to mangrove wood cutting for firewood and house materials, and especially conversion into aquaculture ponds still occurs. The objective of this study is to assess the biodiversity of mangrove vegetation for the sustainability of ecotourism ~~area~~ in West Sulawesi Indonesia. The mangroves of Bebanga village, West Sulawesi province represent an ecotourism area that has not been subject to studies about biodiversity for their sustainability. This ecotourism area provides tourist attractions such as mangrove tracking, mangrove learning and rehabilitation, fishing, bird watching, spots for pre-wedding and selfie photoshoot, culinary, and gazebo with an ocean view for relaxation of tourists. We implemented a line transect method for mangrove vegetation survey and used vegetation analysis equations to calculate mangrove density, frequency, coverage and Important Value Index (IVI). In addition, we **have** used the Shannon-Wiener index for assessing mangrove diversity. Seven species were found namely *Avicennia marina*, *Bruguiera gymnorhiza*, *Rhizophora mucronata*, *Rhizophora stylosa*, *Sonneratia alba*, *Sonneratia caseolaris*, and *Xylocarpus granatum*. However, mangrove area was dominated by *R. mucronata* and most mangroves in sapling growth level. In addition, relative density, frequency and coverage of mangroves at all regeneration were below 56% and found at moderate diversity. These findings suggest the biodiversity of mangrove vegetation has decreased and it will become a potential threat for tourist attractions and tourism business. Therefore, improving mangroves **conservation** and **rehabilitation** should be considered for maintaining and improving biodiversity for the sustainability of ecotourism area.

**Key Words:** biodiversity, mangrove, loss of biodiversity, ecotourism, West Sulawesi.

**Introduction.** Ecotourism is a responsible journey to natural areas that conserve the environment, supporting education, and improve the welfare of the local people and alleviate poverty (Wood 2002). Ecotourism is interesting **for** tourists in the recent decades due to it **gives** opportunities to tourists to learn the environment, local culture, and contribute to preserving biodiversity, and economic development of communities around ecotourism area (Mondino & Beery 2018). The growing of ecotourism has a significant contribution to the tourism industry in Indonesia and other Southeast Asian countries (Ly & Bauer 2014).

The biodiversity is vital to human development because it provides goods and services for contributing to human well-being (at least 40% of the world's economy is based on biological products and ecosystem services) (WEHAB 2002). Biodiversity and ecosystem services ~~are have~~ close relationships ~~both in term impact and dependency~~ (MEA 2005) and often positive (Cardinale et al 2006; Harrison et al 2014). ~~The loss of biodiversity can lead to a decline in ecosystem services (Carugati et al. 2018).~~ Many varieties of tourism depend directly on biodiversity and ecosystem services such as ecotourism, agri-tourism, wellness tourism, adventure tourism, etc. (EU B&B Platform

Commented [J1]: 'area' may be deleted

Commented [AM2R1]: We have deleted

Commented [indra3]: write the full name

Commented [AM4R3]: We have written in the full name

Commented [indra5]: may be Economics?

Commented [AM6R5]: You right, we have edited

Commented [J7]: area may be deleted

Commented [AM8R7]: We have deleted

Commented [indra9]: please rephrase, it is confusing

Commented [AM10R9]: We have rephrased the sentence

2010). The biodiversity plays an important role as a tourist attraction, resources for consumption goods, natural component to support environmental survival and aesthetics (Hakim 2017). Habibullah et al (2016) point out that the tourism industry mostly depends on biodiversity and no tourism activities will sustain without rich biodiversity. However, loss of biodiversity on a global scale becomes increasing than that of natural extinction. It is due to anthropogenic activities such as unsustainable use of natural resources, land conversion development and the introduction of invasive species (Christ et al 2003). MEA (2005) point out that human activities threatened the sustainability of biodiversity and ecosystem services for future generations, and recognized as one of the foremost environmental challenges internationally (WTO 2010)

Mangrove is one of the important coastal ecosystems in the tropical and subtropical regions of the world (Giri et al 2011). They are providing a variety of products (e.g. fish, crab, shrimp, and timber and non-timber products) and essential ecosystem services (e.g. carbon sequestration, coastal protection, saltwater intrusion prevention, habitat for marine biota and ecotourism) that contribute significantly to the livelihood of local communities (Vo et al 2015; Malik et al 2015a). However, over the recent decades, communities around the mangrove area have been highly dependent upon mangroves for many purposes and have generated high levels of exploitation and deforestation (Kusmana 2014; Malik et al 2017a).

In Bebanga village, West Sulawesi province, the mangroves use for ecotourism area has been **expanding** since 2013. This ecotourism area provides tourist attractions such as mangrove tracking, mangrove learning and rehabilitation, fishing, bird watching, spots for pre-wedding and selfie photoshoot, culinary, and gazebo with an ocean view for relaxation of tourists (Zain 2014; Malik et al 2018). However, mangrove woodcutting for firewood and house materials and mainly the expansion of aquaculture pond is still happening and not only decrease areas of mangrove but also often cause negative impacts to the biodiversity such as the species composition, structure, and diversity. ~~Malik et al (2015b) reported that exploitation of mangrove in South Sulawesi has a consequence to decline mangrove areas and cause loss of biodiversity.~~ Malik et al (2018) demonstrated that excessive use of mangroves for firewood and house materials and clearing for the creation of aquaculture ponds have become the driving force behind the degradation and deforestation of mangrove in West Sulawesi. Mangroves **have decreased** from 95 to 82 ha **in Bebanga Village**, whereas aquaculture ponds increased from 205 ha to 212 ha **during** 2013-2018 (Malik et al 2018).

The status of mangrove biodiversity requires to be communicated to the public, policy-makers, and businessmen in the tourism industry. The contribution of biodiversity knowledge is essential in planning, implementation, and monitoring in conservation for the sustainability of mangrove ecotourism area. The loss of mangrove biodiversity that has correspondence to human activities can be measured through degradation of quantity and quality of the forest and a growing number of species that are threatened with the disappearing or which have already **disappeared** (WTO 2010). However, this topic is rarely applied in research and investigations related to the sustainability of ecotourism area in Indonesia and other developing countries (Hakim 2017). There are limited empirical case studies on biodiversity in mangrove ecotourism studies. Therefore, the objective of this study is to assess the biodiversity of mangrove vegetation for the sustainability of ecotourism area of West Sulawesi province, Indonesia. The mangrove ecotourism area in Bebanga village is appropriate to the case study as we hypothesized that the vegetation structure and diversity of mangrove in this area being experienced degradation due to mangrove exploitation for firewood, house materials and primary conversion into aquaculture ponds.

## Material and Method

**Description of the study sites.** This study was conducted in the mangrove ecotourism area of Bebanga Village, Kalukku District, Mamuju Regency, West Sulawesi Province. The area is located at latitude 2°35'7.88" - 2°44'8.62" and longitude 118°58'32.04" -

Commented [indra11]: to be added to the references list

Commented [AM12R11]: We have added to the references list

Commented [indra13]: 2014 or 2015?

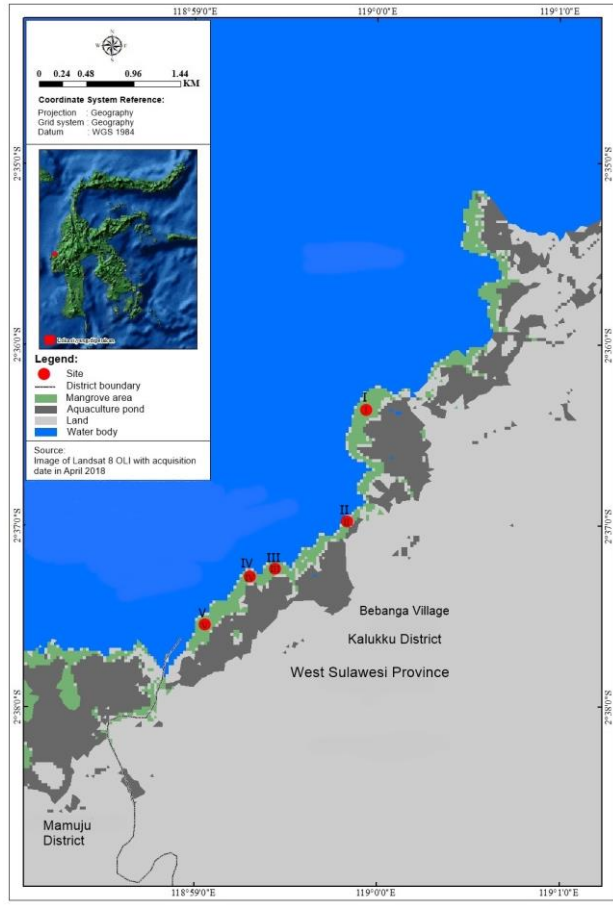
Commented [AM14R13]: 2014

Commented [AM15]: I decided to delete this sentence so it does not make confuse for the next statement.

Commented [indra16]: in South Sulawesi?

Commented [AM17R16]: No, in Bebanga Village, West Sulawesi. We have added it

119° 3'15.74" (Figure 1). The ~~location~~ Bebanga Village is about 23 km from the capital of West Sulawesi, Mamuju city.



Commented [indra18]: 23 km to which direction?

Commented [AM19R18]: Bebanga Village. We have added it

Formatted: Centered

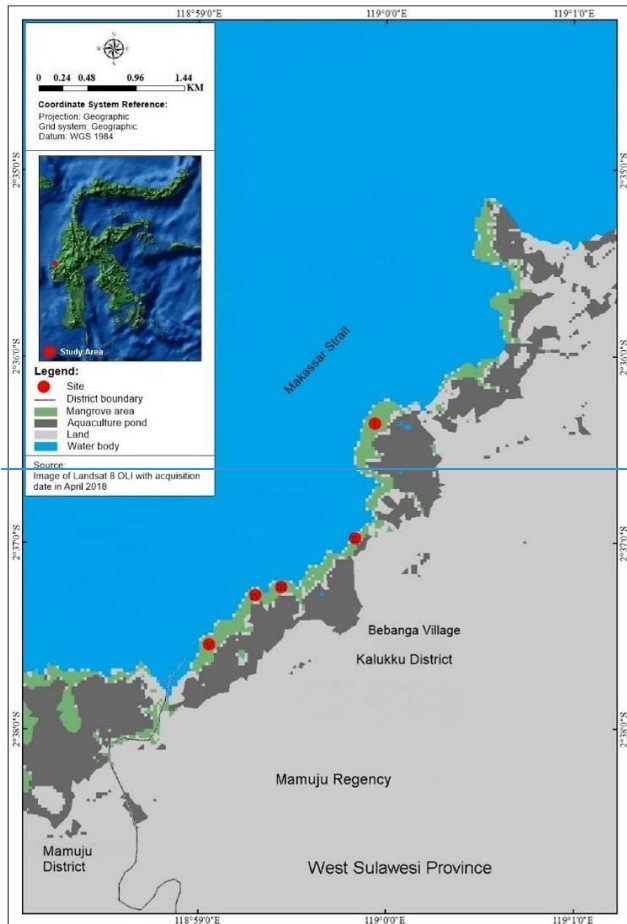


Figure 1. Study area: Bebanga village, Kalukku District, Mamuju Regency, West South Sulawesi Province, and transect locations at five sites.

The village covers 88.42 km<sup>2</sup> and consists of 17 sub-villages. The area borders Makassar Strait to the north, Mamuju District to the south and west, and Sinyonyoi village to the south and east. The population was 8,174 people in 2016 with a population density of 92 people per km<sup>2</sup> (BPS Kabupaten Mamuju 2017). Most of the population is living in this coastal area working as fishermen and farmers (BPS Kabupaten Mamuju 2017). In addition, five sampling sites were selected in this study (Figure 1). The sampling sites were chosen due to an appropriate case study as an area for mangrove ecotourism but remain unwell in managing and under considerable threat.

**Data collection.** Vegetation survey for measuring of mangrove composition, structure and diversity were undertaken in July 2018 using a line-transect method. We installed a line transect at five sites (Figure 1) from the waterfronts towards the landward margin with the length depending on the thickness of the mangrove patch (English et al 1997; Malik et al 2015b). A total of 15 plots were established using a measuring tape and plastic ropes and marked the position using Global Positioning System (GPS), covered by five sites (3 plots per site) along 3.6 km coast length. The sizes for each plot were 10 m

Commented [indra20]: add the numbers from 1 to 5 for the locations

Commented [AM21R20]: We have added it

x 10 m for mature tree level, 5 m x 5 m for sapling level, and 2 m x 2 m for the seedling level (English et al 1997; Malik et al 2015b). The distance between plots was around 30 m depending on the specific vegetation characteristics and the landscape (Malik et al 2015b). In each plot, the species name and a total number of mangrove trees, saplings and seedlings were identified and counted using a tally counter. In addition, all stem diameter at breast height (DBH) of trees ( $\geq 5$  cm DBH) and the DBH 1.3 m above the soil surface or 30 cm above the highest prop root for *Rhizophora* spp. were measured (Malik et al 2015b).

**Data analysis.** We used the following equations (1-6) to calculate the density, relative density, frequency, relative frequency, coverage, and relative coverage, respectively (Malik et al 2015b):

$$D_i = \frac{n_i}{A} \quad (1)$$

$$RD_i = \frac{n_i}{\sum n} \times 100 \% \quad (2)$$

where,  $D_i$ : density of species  $i$  (tree/ha);  $RD_i$ : relative density of species  $i$  (%);  $n_i$ : number of counts per species  $i$ ,  $\sum n$ : the total number of counts for all species,  $A$ : total area of the sample observed ( $m^2$ ).

$$F_i = \frac{P_i}{\sum p} \quad (3)$$

$$FR_i = \frac{F_i}{\sum F} \times 100 \% \quad (4)$$

where,  $F_i$ : frequency of species  $i$ ;  $FR_i$ : relative frequency of species  $i$  (%);  $p_i$ : number of the plots where species  $i$  occurs;  $\sum F$ : the total number of occurrences for all species;  $\sum p$ : the total number of plots observed.

$$C_i = \frac{BA}{A} \quad (5)$$

$$RC_i = \frac{C_i}{\sum C} \times 100 \% \quad (6)$$

where,  $C_i$ : areal coverage for species  $i$ ;  $BA$ :  $\pi DBH^2 / 4$ , where  $BA$  = Basal Area (cm) and  $DBH$  = Diameter at Breast Height (cm);  $A$ : total area of the plot ( $m^2$ );  $\sum C$ : total area coverage for all species;  $RC_i$ : relative coverage of species  $i$  (%).

Furthermore, we summed the value of relative density, relative frequency, and relative coverage (equation 7) to determine the importance value index (IVI) that express the dominance level of individual mangrove species (Malik et al 2015b):

$$IVI = RD + RF + RC \quad (7)$$

where the value of IVI between 0 and 300.

We implemented the Index of Shannon-Wiener (equation 8) for calculating the diversity of mangrove species (Ludwig & Reynolds 1988):

$$H' = - \sum P_i \ln (P_i); P_i = (n_i/N) \quad (8)$$

The range of  $H'$  between 0 to  $> 3$  ( $< 1$ , low diversity;  $1 < H' \leq 3$ , moderate diversity;  $H' > 3$ , high diversity), where  $n_i$  is a number of individual species  $i$  and  $N$  is the total number of species.

## Results

**Mangrove vegetation composition and structure.** A total of 2750 standing live mangrove trees recorded at 15 plots of five study sites, containing mature trees 851,





**Mangrove diversity.** The highest index value of mangrove vegetation diversity was found at sapling level (1.62), followed by seedling (1.56) (Figure 2). The mangrove diversity at all growth levels was a moderate category.

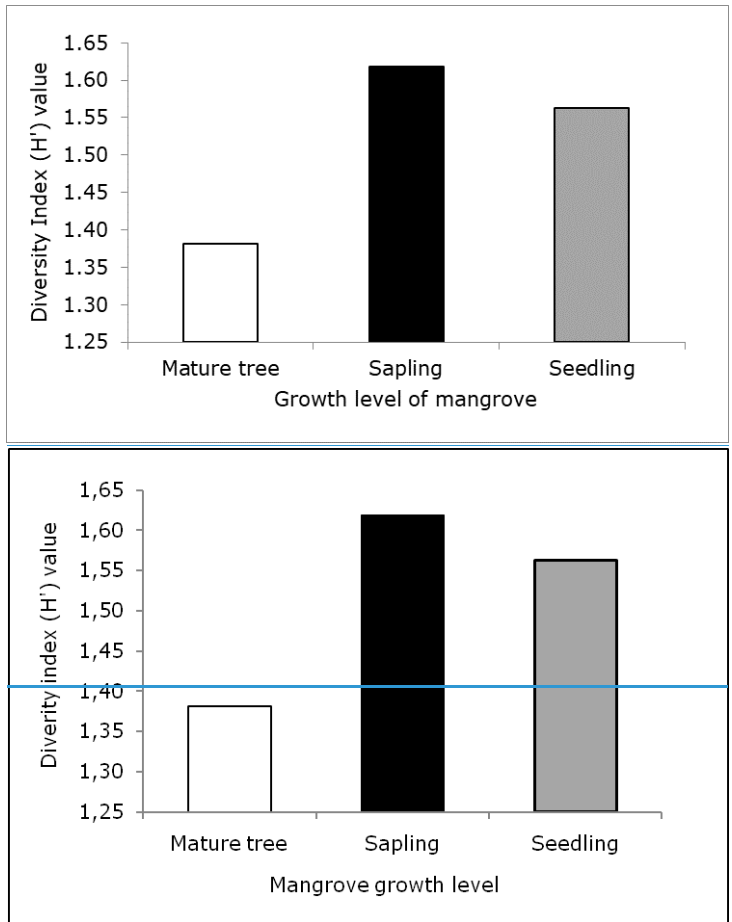


Figure 2. Diversity index (H') value of mangrove in each growth level.

**Discussion.** This study presents a biodiversity assessment of mangrove vegetation from mangrove ecotourism area in Bebanga Village, West Sulawesi. The composition of true mangrove species represented 26% and 16% of the total mangrove species in Sulawesi Island 27 species and Indonesia 43 species, respectively (Kusmana 1993, 2014) distributed in this area. Nurkin (1994) reported that the coastal area of Mamuju Regency South Sulawesi (after 2005, Mamuju Regency area was covered by the administration area of West Sulawesi Province) contained 12 true mangrove species. ~~It is demonstrating~~ It means that the mangrove species number decrease over the last two decades. The species composition reduction corresponds to a similar study in South Sulawesi as reported by Malik et al (2015b). In addition, the relative density, frequency, and coverage of mangroves were below 56%, which means there are many mangrove areas and biodiversity in alarming rate status (Table 2). Pickering & Hill (2007) reviewed that impacts of vegetation cover reduction damages to seedlings and change in species

Formatted: Centered

Commented [indra30]: on the left side, replace “,” with “.” for all the values, according to English rules. So, instead of 1,65 you should have 1.65; 1,60 - 1.60 and so on...

Commented [AM31R30]: We have edited the figure according to English rules

Commented [AM32]: We have edited this reference. The statement includes in Kusmana 2014. So Kusmana (1993) was deleted here and in the references list

Commented [indra33]: wrong grammar

Commented [AM34R33]: We have edited



composition. Malik & Rahiet alm (2017a) demonstrated the annual rate mangrove decreased between 1 and 5% in Sulawesi Island and impacted to mangrove biodiversity (Malik et al 2015b). Most of the mangrove dominated by saplings and seedlings growth level in this area (Table 1), indicating a mangrove area in regenerating status after a disturbance.

Although policy intervention in mangrove conservation at the national, regional and local levels by Indonesian government has improved in the last years (Richards & Friess 2016), unsustainable using of this forest still happens (Malik et al 2018). The rehabilitation programs for preserving of mangrove area, preventing coastal abrasion, and improving fish capture production has introduced in this area in the past years (Abu 2018), however, no great effort was put to increase the diversity of mangrove (Figure 2). It is due to mangrove re-planting merely focused on a single species of *Rhizophora*, resulting in the species become dominant in this area (Table 2). This result confirms the findings of Ellison (2000) and Primavera & Esteban (2008) who were reported that mangrove rehabilitation in Southeast Asian countries has mainly concentrated on planting one or two species, especially *Rhizophora* or red mangrove.

WTO (2010) stated the biodiversity is a direct attraction of nature-based tourism products, such as tourism in protected and ecotourism areas. However, the loss of biodiversity due to human activities is seen as a potential threat to tourist attractions in this mangrove ecotourism area. Malik et al (2018) reported that loss of mangrove vegetation area has caused fauna that inhabited in this mangrove ecotourism area in low diversity, consequential difficult to found mammals (such as monkey and bat), while bird and reptile were found to be only 4 species (bird: *Collocalia* sp., *Ciconia* sp., *Halycon* sp., and *Egretta* sp.; reptile: *Varanus* sp., *Dasia* sp., *Cerberus* sp., and *Chrysopelea* sp.). Hakim (2017) demonstrated that the change of habitat, degradation, and deforestation due to conversion into other land uses has consequences to reduce reproduction success and decline population survival which may lead to species and population disappear. Many wildlife, such as mammals, reptiles, and birds inhabit in mangrove areas will seek refuge and new habitat. In mangrove ecotourism area of Wonorejo, Surabaya, East Java, where the habitat of the long-tailed macaque (*Macaca fascicularis*), for example, mangrove clearing for aquaculture ponds and settlements have an impact to decreased this species population and them left their habitat to find food in the residential area (Anggraeni et al 2013). Proboscis monkey (*Nasalis larvatus*) is one of the protected endemic species and tourism icon in mangrove conservation areas in East Kalimantan, is being threatened also due to a variety of land use conversions, such as settlements, fish ponds, agriculture lands, and road (Atmoko 2011).

Furthermore, the loss of biodiversity is not only threat to species that inhabit mangrove ecotourism area but also tourism business. When tourist attractions in mangrove ecotourism area threatened, it has a potential decrease in tourist interest to visit the ecotourism areas. The business of tourism services such as transportation, accommodation (e.g. homestay), food and restaurants, and so on will be threatened also and subsequently, has a negative consequence to businessmen and community livelihoods who are involved in the tourism business (Habibullah et al 2016). Malik et al (2017b) calculated the potential economic loss of mangrove ecotourism business services on the basis on travel cost method in Sulawesi if mangrove lost reach 1.96 billion Rupiah/year/1000 visits or 145 thousand US Dollar/year/1000 visits (exchange rate 1 US Dollar = 13,500 Rupiah).

Since the sustainability of mangrove ecotourism area and tourism business highly depend on the existence of biodiversity, therefore it is imperative to reduce the loss of biodiversity. More attention of stakeholders and policy-makers to integrate biodiversity consideration in decision-making relating to tourism by preserve of intact mangrove and restore mangrove disturbed areas are important actions. Malik et al (2015a) report the aquaculture businesses frequently abandon ponds as soon as revenue decline (often after only five years) in Sulawesi Island. Therefore, the restoration of abandoned ponds by re-planting mangrove with a variety of species should be considered as a viable option for improving mangrove biodiversity. Brown et al (2014) provided empirical evidence that mangrove restoration project for 43 ha of abandoned ponds has been successful to

increased mangrove biodiversity in Tanakeke Island of South Sulawesi by 2171 tree/ha and 3 species within 32 months after restoration in 2010. In addition, conserving biodiversity cannot be separated from economic challenges. Thus, a balance between mangrove wood consumption through selection cutting and re-planting area on mangrove harvested, and aquaculture revitalization program to prevent the expansion of new ponds should be considered as a win-win solution.

**Conclusions.** This study presented an assessment of mangrove biodiversity for the sustainability of ecotourism area in Bebanga village, West Sulawesi province, Indonesia. Biodiversity of mangrove has decreased in this area due to disturbance from wood cutting and mainly from aquaculture pond expansions. It has a potential threat to the tourist attractions in mangrove ecotourism area and tourism business. More attention from stakeholders and decision-makers is required to conserve and restore mangrove areas lost to over-exploitation in this area. It is a high priority to maintain and possibly increase mangrove biodiversity for the sustainability of ecotourism area.

**Acknowledgements.** We would like to thank the Ministry of Research, Technology and Higher Education of the Republic of Indonesia for the financial support through Penelitian Unggulan Terapan Perguruan Tinggi (PTUPT) scheme (Grant number: 127/UN36.9/PL/2018). We also thank the Research Center of Universitas Negeri Makassar, Department of Geography Universitas Negeri Makassar, and the Governments of West Sulawesi Province and Mamuju Regency for their support of this research.

## References

- Abu A., 2018 [Gerakan rehabilitasi hutan mangrove saluleang oleh team RLA dan pemprov sulbar]. Available at: <http://lensapena.net/gerakan-rehabilitasi-hutan-mangrove-saluleang-oleh-team-rla-dan-pemprov-sulbar/>. Accessed: November, 2018. [in Indonesian]
- Anggraeni I. W. S., Rinaldi D., Mardiasuti A., 2013 Population and habitat of long-tailed macaque (*Macaca fascicularis*) in Wonorejo mangrove ecotourism, Surabaya. *Bonoworo Wetlands* 3:101-113.
- Atmoko T., 2011 Conservation of proboscis monkey and their isolated habitat in Kuala Samboja, East Kalimantan. Paper session presentation at The First International Conference of Indonesian Forestry Researchers (INAFOR), Bogor. Available at: <https://www.researchgate.net/>. Accessed: December, 2018.
- BPS Kabupaten Mamuju, 2017 [Kabupaten Mamuju dalam angka 2017. Badan Pusat Statistik (BPS) Kabupaten Mamuju]. Available at: <https://mamujukab.bps.go.id/>. 2017. Accessed: November, 2018. [in Indonesian]
- Brown B., Fadillah R., Nurdin Y., Soulsby I., Ahmad R., 2014 Case study: community based ecological mangrove rehabilitation (CBEMR) in Indonesia. *SAPIENS* 7:1-12.
- Cardinale B. J., Srivastava D. S., Duffy J. E., Wright J. P., Downing A. L., Sankaran M., Jouseau C., 2006 Effects of biodiversity on the functioning of trophic groups and ecosystems. *Nature* 443(7114):989.
- Carugati L., Gatto B., Rastelli E., Martire M.L., Coral C., Greco S., Danovaro R., 2018 Impact of mangrove forests degradation on biodiversity and ecosystem functioning. *Scientific Reports* 8: 13298.
- Christ C. C., Hillel O., Matus S., Sweeting J., 2003 Tourism and biodiversity: mapping tourism's global footprint. Conservation International and UNEP, Washington, DC, pp. 2-7.
- Ellison A. M., 2000 Mangrove restoration: do we know enough? *Restoration Ecology* 8: 219-229.
- English S., Wilkinson C., Baker V., 2007 Survey manual for tropical marine resources. 2<sup>nd</sup> edition, Australian Institute of Marine Science, Townsville, pp. 119-195.
- EU B&B Platform, 2010 Tourism sector and biodiversity conservation: best practice benchmarking. Outcome of a workshop by the European Union Business and Biodiversity Platform. Available at: <http://ec.europa.eu/environment/>

Commented [indra35]: not quoted in text

Commented [AM36R35]: We have added it in the text

Commented [indra37]: pages

Commented [AM38R37]: We have provided it

biodiversity/business/. Accessed: December, 2018.

Giri C., Oching E., Tieszen L. L., Zhu Z., Singh A., Loveland T., Masek J., Duke N., 2011 Status and distribution of mangrove forests of the world using earth observation satellite data. *Global Ecology Biogeography* 20:154-159.

Habibullah M. S., Din B. H., Chong C. W., Radam A., 2016 Tourism and biodiversity loss: implications for business sustainability. *Procedia Economics and Finance* 35:166-172.

Hakim L., 2017 Managing biodiversity for a competitive ecotourism industry in tropical developing countries: new opportunities in biological fields. *AIP Conference Proceedings* 1908(1):030008.

Harrison P. A., Berry P. M., Simpson G., Haslett J. R., Blicharska M., Bucur M., Dunford R., Egoh B., Garcia-Liorente M., Geamana N., Geertsema W., Lommelen E., Meiresonne L., Turkelboom F., 2014 Linkages between biodiversity attributes and ecosystem services: a systematic review. *Ecosystem Services* 9:191-203.

~~Kusmana C., 1993 The current status of mangrove forest management in Indonesia. Department of Silviculture, Faculty of Forestry, Bogor Agricultural University, Bogor, Indonesia.~~

Kusmana C., 2015-2014 Distribution and current status of mangrove forests in Indonesia. In: *Mangrove ecosystems of Asia*. Faridah-Hanum I., Latiff A., Hakeem K. R., Ozturk M. (eds), Springer, New York, pp. 37-60.

Ludwig J. A., Reynolds J. F., 1998 Statistical ecology. A primer on methods and computing. John Wiley and Sons, New York, pp. 85-103.

Ly T. P., Bauer T., 2014 Ecotourism in mainland Southeast Asia: theory and practice. *Tourism, Leisure and Global Change* 1:61-80.

Malik A., Fensholt R., Mertz O., 2015a Economic valuation of mangroves for comparison with commercial aquaculture in South Sulawesi, Indonesia. *Forests* 6:3028-3304.

Malik A., Fensholt R., Mertz O., 2015b Mangrove exploitation effects on biodiversity and ecosystem services. *Biodiversity and Conservation* 24:3543-3557.

~~Malik A., Mertz O., Fensholt R., 2017a Mangrove forest decline: consequences for livelihoods and environment in South Sulawesi. *Regional Environmental Change* 17: 157-169.~~

Malik A., Rahim A., 2017b Assessment of potentials for payment for mangrove ecosystem services in South Sulawesi Indonesia - Final Report DIPA BIOTROP 2017. Southeast Asian Regional Centre for Tropical Biology (SEAMEO BIOTROP), Bogor, West Java, pp. 36-39.

~~Malik A., Mertz O., Fensholt R., 2017 Mangrove forest decline: consequences for livelihoods and environment in South Sulawesi. *Regional Environmental Change* 17: 157-169.~~

Malik A., Rahim A., Sideng U., 2018 [Strategi dan desain pengembangan kawasan ekowisata mangrove di Kelurahan Bebanga, Kecamatan Kalukku, Kabupaten Mamuju] -- [Laporan Akhir Penelitian Terapan Unggulan Perguruan Tinggi (PTUPT) (PTUPT)], Universitas Negeri Makassar, Makassar, South Sulawesi, pp. 18-44. [in Indonesian]

MEA, 2005 Ecosystem and human well-being: synthesis. Island Press, Washington DC, pp. 6-24.

Mondino E., Beery T., 2018 Ecotourism as a learning tool for sustainable development. The case of Monviso Transboundary Biosphere Reserve, Italy. *Journal of Ecotourism* 18:1-15.

Nurkin B., 1994 Degradation of mangrove forests in South Sulawesi, Indonesia. *Hydrobiologia* 285:271-276.

Pickering C. M., Hill W., 2007 Impacts of recreation and tourism on plant biodiversity and vegetation in protected areas in Australia. *Journal of Environmental Management* 85:791-800.

Primavera J. H., Esteban J. M. A., 2008 A review of mangrove rehabilitation in the Philippines: successes, failures and future prospects. *Wetlands Ecology Management* 16:345-358.

Richards D. R., Friess D. A., 2016 Rates and drivers of mangrove deforestation in

**Commented [indra39]:** is this the original title? Or the paper was initially written in Indonesian?

Also provide the pages

**Commented [AM40R39]:** We have deleted this reference according to our previous comment

**Commented [indra41]:** 2014 or 2015?

**Commented [AM42R41]:** 2014. We have changed

**Commented [indra43]:** pages

**Commented [AM44R43]:** We have added it

**Commented [indra45]:** pages

**Commented [AM46R45]:** We have added it

**Commented [indra47]:** first, clearly delimitate the title. Then, put the title between [title...title].

Finally, provide the pages too

**Commented [AM48R47]:** We have edited it.

**Commented [indra49]:** pages

**Commented [AM50R49]:** We have added it

Southeast Asia, 2000-2012. Proceedings of the National Academy of Sciences of the USA 113:344-349.

[Vo Q.T., Kuenzer C., Oppelt N., 2015 How remote sensing supports mangrove ecosystem services valuation: a case study in Ca Mau province, Vietnam. Ecosystem Services, 14: 67-75.](#)

WEHAB, 2002 A framework for action on biodiversity and ecosystem management, water, energy, health, agriculture and biodiversity. Working Group Report, contribution to the World Summit on Sustainable Development, Johannesburg, South Africa, 26 August – 4 September 2002. United Nations, New York, pp. 7-9.

Wood M., 2002 Ecotourism: principles, practices, and policies for sustainability. UNEP, pp. 9-16.

WTO, 2010 Tourism and biodiversity – achieving common goals towards sustainability. UNWTO, Madrid, Spain, pp. 1-19.

Zain Z., 2014 [Objek wisata hutan bakau (mangrove) kota Mamuju, Sulawesi Barat]. Available at: <http://kompadansamandar.blogspot.co.id/2014/05/objek-wisata-hutan-bakau-mangrove-kota.html>. Accessed: April, 2016. [in Indonesian]

Formatted: Font: Verdana, 10 pt

Formatted: Space After: 0 pt

Formatted: Font: Verdana, 10 pt

Commented [indra51]: if possible, provide the pages too

Commented [AM52R51]: We have provided it

Commented [indra53]: provide the pages too

Commented [AM54R53]: We have provided it

Commented [indra55]: pages

Commented [AM56R55]: We have added it

Received: 25 May 2019. Accepted: 23 July 2019. Published online: xx August 2019.

Authors:

[Abdul Malik, Department of Geography, Faculty of Mathematics and Natural Sciences, Universitas Negeri Makassar, Jl. Malengkeri Raya Kampus UNM Parangtambung, 90224, Makassar, Indonesia, e-mail: \[abdulmalik@unm.ac.id\]\(mailto:abdulmalik@unm.ac.id\)](#)

[Abdul Rahim, Study program of Economic Development, Faculty of Economics, Universitas Negeri Makassar, Jl. Pendidikan Raya, 90222, Makassar, Indonesia, e-mail: \[abd.rahim@unm.ac.id\]\(mailto:abd.rahim@unm.ac.id\)](#)

[Uca Sideng, Department of Geography, Faculty of Mathematics and Natural Sciences, Universitas Negeri Makassar, Jl. Malengkeri Raya Kampus UNM Parangtambung, 90224, Makassar, Indonesia, e-mail: \[ucasideng@unm.ac.id\]\(mailto:ucasideng@unm.ac.id\)](#)

[Abdul Rasyid, Department of Marine Science, Faculty of Marine Sciences and Fisheries, Universitas Hasanuddin, Jl. Perintis Kemerdekaan Km. 10, 90245, Makassar, Indonesia, e-mail: \[abdrasyid@unhas.ac.id\]\(mailto:abdrasyid@unhas.ac.id\)](#)

[Jamaluddin Jumaddin, Department of Geography, Faculty of Mathematics and Natural Sciences, Universitas Negeri Makassar, Jl. Malengkeri Raya Kampus UNM Parangtambung, 90224, Makassar, Indonesia, e-mail: \[jamaluddin.j95@gmail.com\]\(mailto:jamaluddin.j95@gmail.com\)](#)

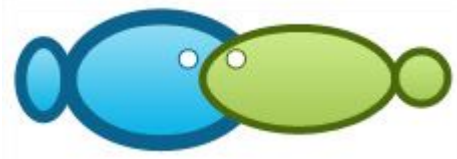
**Add here the complete name of each author, in order. Then, for each one of them, provide the complete name of the institution, the street, number, postal code, city, country and e-mail address.**

This is an open-access article distributed under the terms of the Creative Commons Attribution License, which permits unrestricted use, distribution and reproduction in any medium, provided the original author and source are credited.

How to cite this article:

Malik A., Rahim A., Sideng U., Rasyid A., Jumaddin J., 2019 [Biodiversity assessment of mangrove vegetation for the sustainability of ecotourism area in West Sulawesi Indonesia](#). AAAL Bioflux 12(4):xxx-xxx.

OPEN ACCESS



Bioflux (publishing house)  
54 Ceahlau Street,  
Cluj-Napoca 400488,  
Romania, European Union

**Certificate/Letter of acceptance**

This certificate shows that your manuscript entitled:  
**Biodiversity assessment of mangrove vegetation for the sustainability of  
ecotourism in West Sulawesi Indonesia**

Authors:  
**Abdul Malik, Abd. Rahim, Uca Sideng, Abdul Rasyid, Jamaluddin Jumaddin**

was accepted for publication in vol 12, issue 4 (2019) of the scientific/academic journal:  
Aquaculture, Aquarium, Conservation & Legislation –  
International Journal of the Bioflux Society.

Thank you for publishing with us!

Cordially yours,

Editor-in-chief:  
Claudiu Gavriiloaie, PhD





Abdul Malik <abdulmalik@unm.ac.id>

---

## Submission of the manuscript research paper

---

**gavriloaie ionel claudiu** <ionelclaudiu@yahoo.com>  
To: Abdul Malik <abdulmalik@unm.ac.id>

Thu, Aug 8, 2019 at 10:21 PM

Dear Professor Abdul Malik,

I received both the revised manuscript and the payment document.  
While my colleague Petrescu-Mag will check the bank account, I will edit the final form of the paper. When ready it will be sent to you for a final check prior publication.  
Thank you very much!

Cordially yours,  
Claudiu Gavriiloaie

[Quoted text hidden]