

PAPER NAME

**Isolation and characterization of phosphate solubilizing bacteria from corn rhizosphere.pdf**

AUTHOR

**Hilda Karim**

WORD COUNT

**3035 Words**

CHARACTER COUNT

**16768 Characters**

PAGE COUNT

**7 Pages**

FILE SIZE

**468.8KB**

SUBMISSION DATE

**Dec 14, 2022 10:16 PM GMT+8**

REPORT DATE

**Dec 14, 2022 10:16 PM GMT+8**

### ● 11% Overall Similarity

The combined total of all matches, including overlapping sources, for each database.

- 11% Internet database
- 0% Publications database

### ● Excluded from Similarity Report

- Crossref database
- Submitted Works database
- Quoted material
- Small Matches (Less than 12 words)
- Crossref Posted Content database
- Bibliographic material
- Cited material
- Manually excluded sources

PAPER • OPEN ACCESS

## Isolation and characterization of phosphate solubilizing bacteria from corn rhizosphere

**2** To cite this article: Haswania *et al* 2021 *IOP Conf. Ser.: Earth Environ. Sci.* **911** 012063

View the [article online](#) for updates and enhancements.

### You may also like

- [Screening of the drought tolerant phosphate solubilizing bacteria in dissolving P-inorganic](#)  
L E Susilowati, B H Kusumo and Z Arifin
- [The effect of biostimulant in root and population of phosphate solubilizing bacteria: a study case in upland rice](#)  
Agustin Sri Mulyatni, R H Praptana and D Santoso
- 5** [Characterization of Effective Microorganism \(Phosphate Solubilizing Bacteria\) Isolated from Rice-Field Soils](#)  
N A Rosnan, K M Aziz, M M Hashim et al.



The Electrochemical Society  
Advancing solid state & electrochemical science & technology

243rd ECS Meeting with SOFC-XVIII

Boston, MA • May 28 – June 2, 2023

**Abstract Submission Extended  
Deadline: December 16**

[Learn more and submit!](#)

# Isolation and characterization of phosphate solubilizing bacteria from corn rhizosphere

H. Swania<sup>1</sup>, H. Karim<sup>1</sup>, A.A. Azis<sup>1</sup>, N. Iriany<sup>2</sup>, O. Jumadi

<sup>1</sup> Biology Department, Faculty of Mathematics and Natural Science,  
State University of Makassar, Indonesia 90224

<sup>2</sup> Indonesian Cereals Research Institute. Jl. Dr. Ratulangi 274, Maros,  
South Sulawesi Indonesia 90514.

Email: [oslanj@unm.ac.id](mailto:oslanj@unm.ac.id)

**Abstract.** The aim of this study was to isolate and characterize the Phosphate solubilizing bacteria from the rhizosphere of *Zea mays* L., Jeneponto Regency. This research was conducted in several stages; i.e, sampling, medium preparation, sample dilution, isolation, characterization in the form of gram staining, biochemical tests, and quantitative tests of phosphate solubility. Soil samples were diluted in 0.9% NaCl and soil containing microbes was isolated on the Picovskaya medium. Three isolates were obtained which could dissolve phosphate, namely J2KN1, J3KR2, and J3TG3 isolates. The isolates were generally round in shape with raised elevations, white, slimy, smooth, shiny surface, milky white, shape like coccus and bacillus, and gram-negative. Some of the isolates had positive motility, indole, voges, methyl red, glucose, and sucrose fermentation in the biochemical test. The quantitative tests of the ability to dissolve phosphate showed that J2KN1 isolate had the highest concentration of 51.1  $\mu\text{M}$ , and the J3KR1 and J3TG3 isolates had a concentration of 45.2  $\mu\text{M}$  and 37.6  $\mu\text{M}$ , respectively.

## 1. Introduction

Corn is a horticultural commodity that has a high demand, particularly in Indonesia. The steady increase in demand makes farmers produce more corn crops every season. However, this is not directly proportional to the growth and productivity of corn in Indonesia. The low growth and productivity of corn can be caused by several factors, namely the application of unsuitable plant cultivation technology, climatic condition, and low soil fertility. One of the efforts to increase productivity is using superior varieties and optimal fertilization of inorganic fertilizers, which is the fastest and easiest way to deal with plant nutritional needs. It is easily biodegradable and can be directly absorbed by plants. Therefore, farmers rely on inorganic fertilizers. However, inorganic fertilizers have several drawbacks, such as they are expensive and cause environmental pollution if given inappropriately and excessively. Organic fertilizers are an alternative to overcome problems caused by excessive use of inorganic fertilizers [13].

The increase in organic acid levels also causes a decrease in the pH of the rhizosphere that P ions can dissolve and be available to plants. Apart from phosphatase and phytase, phosphate solubilizing bacteria also produce other enzymes capable of producing free P, such as pyrophosphatase and metaphosphatase [8]. Phosphatase solubilizing bacteria are nonpathogenic soil bacteria, and they include in the category of plant growth-promoting bacteria. These bacteria produce vitamins and phytohormones to improve plant root growth and increase nutrient uptake [6].



Phosphate solubilizing bacteria are soil microorganisms that can release P bonds and play a role in dissolving P, which is not available to become available. Plants can use it to grow and develop the availability of P elements, especially in acid soils. In addition, these P-solvent microorganisms will produce organic acids capable of chelating Al, Fe, Ca, and Mg to form a stable organometal complex. Phosphate becomes available for plants and solvent for organic phosphate and mostly in root areas [4]. Based on the description above, a study entitled isolation and characterization of phosphate solubilizing bacteria from the rhizosphere of corn in the area of marginal land in Jeneponto Regency, South Sulawesi were carried out.

## 2. Materials and Methods

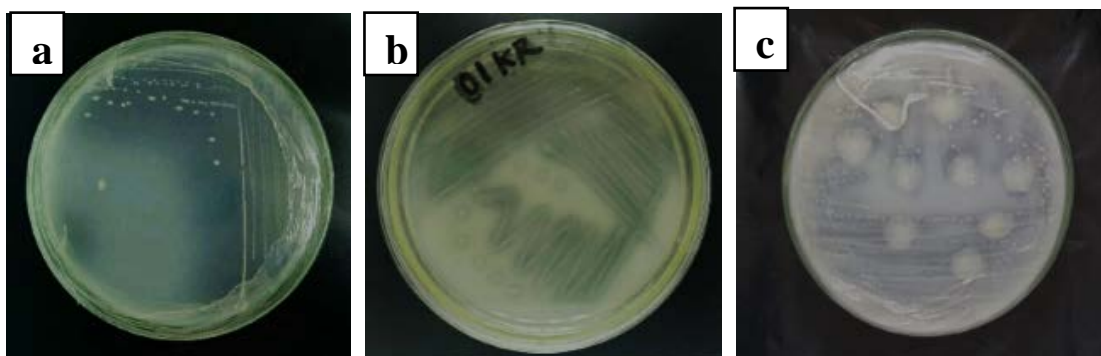
The soil sample was taken from corn plantations located in 3 points, namely Bangkala District, Tamalatea District, and North Bangkala District in Jeneponto Regency, South Sulawesi. The Pycovskaya medium has a composition of glucose 10 g, yeast extract 0.5 g,  $(\text{NH}_4)_2\text{SO}_4$  0.5 g,  $\text{MgSO}_4 \cdot 7\text{H}_2\text{O}$  0.1 g, 5 g  $\text{Ca}_3\text{PO}_4$ , 0.2 g KCl, 0.02 g  $\text{MnSO}_4 \cdot 2\text{H}_2\text{O}$ , 0.02 g  $\text{FeSO}_4 \cdot 7\text{H}_2\text{O}$ , 20 g agar, and a pH of 6.8 were dissolved in 1000 ml distilled water [20]. Then heated to boiling and sterilized using an autoclave. Soil samples were weighed as much as 5 grams and then carried out stratified dilutions. In the  $10^{-1}$  UC bottle, as much as 45 ml of physiological 0.9% NaCl solution. They are then transferred to UC bottles  $10^{-2}$  -  $10^{-3}$  containing 25 ml Physiological NaCl solution of 0.9%. Isolates were grown on Pycovskaya medium and form a clear zone are then subjected to a purification or purification stage. Isolates were incubated at  $300^\circ\text{C}$  for 72 hours [1].

Characterization of phosphate solubilizing bacteria using the gram stain method, biochemical tests, and quantitative analysis of phosphate solubilizing bacteria were carried out using the direct method using a Haemocytometer. Counting the number of dead cells is blue, while the living cells are opaque [12]. A quantitative test of the ability of bacteria to dissolve phosphate was carried out using a colorimetric method; two round-shaped needle of each selected isolate were inoculated into 40 mL of liquid Pikovskaya media, then incubated using a shaker at a speed of 120 rpm at room temperature for 72 hours. The analysis was carried out by reacting 1 mL of the supernatant to a color-forming reagent (2.5 mL of 2.5% sodium molybdate and 1 mL of 0.3% hydrazine sulfate). Phosphate concentration was measured using a spectrophotometer at a wavelength of 830 nm. The control used was liquid Pikovskaya media without the inoculants [11].

## 3. Result and Discussion

### 3.1. Isolation and purification of phosphate solubilizing bacteria

The results showed that 3 types of isolates were found, i.e. J2KN1, J3KR2 and J3TG3 which were characterized by the formation of a clear zone around the bacterial colony in the Pycovskaya medium (Figure 1).



**Figure 1.** Isolate J2KN1 which forms a clear zone on the medium (a); Isolate J3KR2 which forms a clear zone on the medium (b); Isolate J3TG3 which forms a clear zone in the Pycovskaya medium (c);

Based on this research, it was found that 3 sample isolates were included in the phosphate solubilizing bacteria, which was marked by the formation of a clear zone around the bacterial colony in the Picovskaya medium. The formation of a clear zone is caused by the activity of phosphate solubilizing bacteria in dissolving bound phosphate. The research showed that phosphate solubilizing bacteria significantly affected the increase in available phosphate in the soil; besides producing organic acids, phosphate solubilizing bacteria also produce phosphatase enzymes that can dissolve phosphate that phosphate becomes available to plants [16]. Widiawati and Suliasih reported [18] that phosphate solubilizing bacteria has the excellent ability as a biofertilizer by dissolving phosphates that are still entangled in the soil, such as Fe's elements, Mg Ca, so that these elements can be dissolved by bacteria which become available to plants. Some soil bacteria that live around the rhizosphere can excrete organic acids such as formic acid, propionic acid, lactic acid, and fumaric acid and bind to  $Fe^{2+}$  and  $Al^{3+}$  ions; they can free bound phosphate ions to become phosphate which plants can absorb.

### 3.2. Morphological characteristics of phosphate solubilizing bacteria

All isolates had a round shape (Table 1), Some isolates have wavy edges, except for J3KR2 isolates. The color of the isolates varied; white and milky white; some isolates were not slimy, except for 32TG3 isolates. The nature of the colony is round. Gram staining showed that J2KN1 was coccus, and J3KR4 and J3TG3 isolates had the form of bacilli form. J2KN1 and J3TG3 isolates was gram-negative bacteria, and J3KR2 isolates were gram-positive bacteria.

**Table 1.** Colony Characteristics of Phosphate solubilizing bacteria isolates from the rhizosphere of maize (*Zea mays* L.) in Jeneponto district.

isolates	Characteristics of the bacterial colony							
	Elevation	surface	edge	color	mucus	Colony nature	shape	Gram
J2KN1	arise	smooth	flat	Milk white	Not slimy	round	coccus	negative
J3KR2	arise	Shiny smooth	choppy	white	Not slimy	round	Basil	positive
J3TG3	arise	Shiny smooth	flat	Milk white	slimy	round	Basil	negative

Gram-positive bacteria with peptidoglycan cell walls will react with crystal violet and iodine to form a complex that is strong and difficult to penetrate by safranin. Gram-negative bacteria have a thin cell wall so that the primary paint color will dissolve so that the cell wall can be colored by safranin. Mukamto et al. [9] reported that isolation and characterization of the phosphate solvent *Bacillus* sp from the rhizosphere of the leguminosae plant showed a type of isolate similar to the genus *Azotobacter*. This isolate was characterized a gram-negative, rod-shaped, non-motile bacteria with a slimy surface. Gram-negative bacteria have a dual membrane system, namely plasma membrane and a permeable membrane that envelops the plasma membrane. Isolation and characterization of the phosphate solubilizing *Bacillus* sp from the rhizosphere of Leguminosae plants showed that several isolates had flat, raised and convex elevations [9]. The clear zone around the colony shows that there is an activity of phosphate solubilizing bacteria in dissolving bound phosphate; this is due to the dissolution of  $Ca^3PO^4$  in the Picovskaya medium [10]. This is in line with the research of George et al [5] which states that phosphate solubilizing bacteria will dissolve phosphate in the form of  $PO^4$  using the enzyme phosphatase so that a clear zone is formed around the colony of phosphate solubilizing bacteria [5].

Phosphate solubilizing bacteria isolated from three types of rhizosphere soil of banana (*Musa paradisiaca* var. Nipah) in Singkawang City showed wavy and irregular edges. The color of the bacterial isolates consisted of white, brown, and milky white. Some colonies are slimy, the colony nature was

irregular and round [3]. The surface of the isolate is smooth, shiny, and rough, and the edges of the colony show choppy and flat [18].

### 3.3. Biochemical test

The biochemical test data was obtained, namely motile, where isolates will grow around the puncture line; conversely, non-motile isolates will not grow around the puncture line. The results of the indole test showed that several positive isolates, namely J2KN1, J2TG3, and J3TG5 with the formation of dark red rings on the surface of the medium. Based on the methyl red test results, the J2KN1 and J3TG3 isolates showed positive results due to the formation of red color in the medium. Voges Proskauer test of the isolates J2KN1, J3KR2, and J3TG3 showed positive results because of the red color in the medium. Positive carbohydrate fermentation test for J2KN isolates, while found positive results for sucrose fermentation were found in J2KN1, J3KR2, and J3TG3 isolates. This is in line with the research of Etha et al [3] which states Phosphate solubilizing bacteria isolated from three types of rhizosphere soil of banana (*Musa paradisiaca* var. Nipah) in Singkawang City showed some isolates positive carbohydrate fermentation.

**Table 2.** Characteristics of the phosphate solubilizing bacteria isolates that were subjected to biochemical testing.

No	Isolates	Motility	Methyl red	Biochemical test			
				Voges-Proskauer	Indole	Glucose fermentation	Sucrose fermentation
1	J2KN1	-	+	+	+	+	+
2	J3KR2	+	+	+	-	-	+
3	J3TG3	+	+	+	+	-	+
4	control	-	-	-	-	-	-

Note: (-) = negative biochemical test, (+) = positive biochemical test

### 3.4. Test the ability of bacteria to dissolve phosphate

The isolate that dissolved the highest phosphate was J2KN1, an average absorbance of 51.1  $\mu\text{M}$  or 1.020  $\mu\text{g} / \text{ml}$ , and the isolate that dissolved the lowest phosphate was J3TG3, as much as 37.6  $\mu\text{M}$  (Table 3). The determination of phosphate solubilizing bacterial showed a growth phase with the average isolate showing an exponential phase on the third day (72 hours) of incubation before testing the ability of phosphate solubilizing bacteria to dissolve phosphate in liquid pikovskaya medium in the form of  $\text{Ca}^3\text{PO}^4$ . The highest dissolved phosphate content in the GGO1 bacterial isolate was 0.473  $\mu\text{g} / \text{ml}$  [17].

**Table 3** Phosphate concentrations for 3 isolates of phosphate solubilizing bacteria

No.	Isolates	Phosphate concentration ( $\mu\text{M}$ )
1.	J2KN1	<b>51,1 <math>\mu\text{M}</math></b>
2.	J3KR2	<b>45,2 <math>\mu\text{M}</math></b>
3.	J3TG3	<b>37,6 <math>\mu\text{M}</math></b>

Phosphatase enzyme activity is also determined by the clear zone formed around the colony. The phosphate dissolution index's value indicated the isolates' ability to dissolve the phosphate in liquid Pikovskaya media. The phosphate concentration obtained shows the concentration of phosphate that each isolate can dissolve. Bacteria such as *Pseudomonas*, *Bacillus*, and *Rhizobium* can dissolve phosphate [15]. Organic acids dissolve insoluble phosphates for use, thereby increasing the potential availability of phosphate in plants. Microorganisms isolated from the soil rhizosphere are adapted to plants and provide better growth [14].

#### 4. Conclusion

Three bacterial isolates, namely J2KN1, J3KR2, and J3TG3 dissolved phosphate by forming a halo zone (clear zone) around the bacterial colony. Several isolates were positive in the Motility test, Indol test, Proskauer Voges test, Methyl red test, and carbohydrate fermentation test. The quantitative test of the ability to dissolve phosphate showed that J2KN1 isolate had the highest concentration of 51.1  $\mu\text{M}$  therefore.

#### Acknowledgment

This work was supported by PNBP Universitas Negeri Makassar.

#### References

- [1] Arfarita, Lestari, Murwani dan Higuchi. 2017. Isolation of Indigenous Phosphatase Solubilizing bacteria From Green Bean Rhizospheres. *Journal Of Degraded and Mining Lands Management*. **4**(3) pp 845-851.
- [2] Dessy M S. Nunuk P and Isnaini N. 2013. Isolation and Potential of IAA hormone (Indol Acetic Acid) on Soybean (*Glycine max.L*) on Yellow Soil. *Jurnal USU.ac.id*. **1** (2).
- [3] Etha M., Siti K. and Riza L. 2013. Isolation of Phosphate Solubilizing Bacteria from Three Types of Rhizosphere Soil of Nipah banana Plants (*Musa paradisiaca* var. Nipah) in Singkawang city. *Journal of Protobiont* **2** (2).
- [4] Gaur.A.C; R.S. Mather and K.V. Sadasivam. 1980. Effect of organic material and phosphate-dissolving culture on the yield of wheat and greengram. *Indian J. Agron.* **25**: 501-503. Pal. S.S, 1998. Interaction of an acid tolerant strain of phosphate solubilizing bacteria with a few acid tolerant crops. *Plant and Soil*. **198**: 167-177.
- [5] George, TS., Gregori, PJ., Wood, M., Read, J and Buresh, RJ. 2002. Phosphatase activity and organic acids in the rhizosphere of potential agroforestry species and maize. *Soil Biol. Biochem.* **34**:1487-1494.
- [6] Glick, B. R. 1995. The Enhancement of Plant Growth by Free Living Bacteria. *Can. J. Microbiol.* **41**:109-117.
- [7] Ilham, Ida B D, I Gusti M O N. dan Retno. 2014. Isolation and Identification of Potential Phosphate Solubilizing Bacteria in Conventional Soil and Organic Soil. *Journal of Symbiosis* **2** (1): 173-183
- [8] Mehrvars, S. and Chaichi, M. R. 2008. Effect of Phosphate Solubilizing Microorganisms and Phosphorus Chemical Fertilizer on Forage and Grain Quality of Barely (*Hordeum vulgare* L.). *American-Eurasian J. Agric. & Environ. Sci.*, **3** (6) : 855-856.
- [9] Mukamto. Syazwani U. Weda M, Ahmad S. Laila I. Guntur T. 2015. Isolation and Characterization of *Bacillus* sp. Phosphate Solvent from the Rhizosphere of Leguminoseae Plants. *Science and Mathematics*. **3**(2).
- [10] Purwaningsih, S. 2003. Isolation, Population and Characterization of Phosphate Solubilizing Bacteria in Soil from Bogani Nani Wartabone National Park, North Sulawesi. *Biology* **3** (1): 22-31.
- [11] Novitasari, Istiani. 2017. Isolation, Characterization and Identification of Phosphate Solubilizing Bacteria which have the ability to tether nitrogen from ex-mined soil in Hambalang. *Bogor Agricultural Institute*.
- [12] Provost and Wallert. 1998. Haemocytometer Cell Counting protocol. Investigating the Biochemistry and Cellular Physiology of NHE1.

- [13] Ramadhani, Resqi H. Moch R and Moch. Dawam M. 2016. The Effect of Nitrogen Fertilizer Sources and Time of Urea on Growth and Yield of Sweet Corn (*Zea mays* Sturt. Var. *saccharata*). *Journal of Crop Production*, **4**(1) pp. 8-15.
- [14] Rfaki, Abderrazak. Lila N, dan Jamal I. 2015. Isolation and Characterization of Phosphate Solubilizing Bacteria from the Rhizosphere of Faba Bean (*Vicia faba* L) in Meknes Region, Marocco. *British Microbiology Research Journal* **6**(5). 247-254.
- [15] Rodriguez H, Fraga R. 1999. Phosphate solubilizing bacteria and their role in plant growth promotion. *Biotechnol Adv.* **17**(4)
- [16] Suliasih and Rahmat. 2007. Phosphatase Activity and Calcium Phosphate Dissolution by some Phosphate Solubilizing Bacteria. *Biodiversity* **8** (1): 23-26.
- [17] Wahyu L. Tetty M L. Atria M. 2011. The Ability of Sei Garo Phosphate solubilizing bacteria in Providing Dissolved Phosphate and its Absorption in Soybean Plants. *Biospecies*. **4**(2).
- [18] Widiawati, S dan Suliasih. 2005. Augmentation of Phosphate Solubilizing Bacteria Potential as a Growth Enhancer for Caysin in Marginal Soil. *Biodiversity*. **7**(1):10-14.
- [19] Worapon, Surapat. Charida P. Pongsak R. Tadanori A and Sophon B. 2013 Characteristics of Phosphate Solubilization by Phosphate-Solubilizing Bacteria Isolated from Agricultural Chili Soil and Their Efficiency on the Growth of Chili (*Capsicum frutescens* L. cv. Hua Rua). *Chiang Mai J. Sci.* **40**(1).
- [20] Zhang Jian, Pengcheng Wang, Ling P, Qi-An Zhang, Congsheng Y, and Jingyi Ch. 2017. Isolation and Characterization of Phosphate Solubilizing Bacteria from Mushroom Residues and Their Effect on Tomato Plant Growth Promotion. *Polish Journal of Microbiology*. **66** (1):57-65.



● **11% Overall Similarity**

Top sources found in the following databases:

- 11% Internet database
- 0% Publications database

TOP SOURCES

The sources with the highest number of matches within the submission. Overlapping sources will not be displayed.

<b>1</b>	<b>eprints.covenantuniversity.edu.ng</b> Internet	<b>3%</b>
<b>2</b>	<b>sci.ldubgd.edu.ua</b> Internet	<b>3%</b>
<b>3</b>	<b>link.springer.com</b> Internet	<b>&lt;1%</b>
<b>4</b>	<b>mail.scialert.net</b> Internet	<b>&lt;1%</b>
<b>5</b>	<b>semantic scholar.org</b> Internet	<b>&lt;1%</b>
<b>6</b>	<b>jab.alzahra.ac.ir</b> Internet	<b>&lt;1%</b>
<b>7</b>	<b>repository.ub.ac.id</b> Internet	<b>&lt;1%</b>
<b>8</b>	<b>mjm.usm.my</b> Internet	<b>&lt;1%</b>
<b>9</b>	<b>files.eric.ed.gov</b> Internet	<b>&lt;1%</b>

10

**e3s-conferences.org**

Internet

&lt;1%

● Excluded from Similarity Report

- Crossref database
- Submitted Works database
- Quoted material
- Small Matches (Less than 12 words)
- Crossref Posted Content database
- Bibliographic material
- Cited material
- Manually excluded sources

---

EXCLUDED SOURCES

<b>iopscience.iop.org</b>	<b>18%</b>
Internet	
<b>sciencegate.app</b>	<b>8%</b>
Internet	
<b>repository.umi.ac.id</b>	<b>7%</b>
Internet	
<b>repository.unja.ac.id</b>	<b>6%</b>
Internet	
<b>repository.lppm.unila.ac.id</b>	<b>6%</b>
Internet	
<b>pure.hw.ac.uk</b>	<b>6%</b>
Internet	
<b>repository.untad.ac.id</b>	<b>6%</b>
Internet	
<b>repositorioacademico.upc.edu.pe</b>	<b>6%</b>
Internet	
<b>multisitestaticcontent.uts.edu.au</b>	<b>6%</b>
Internet	

**repository.pertanian.go.id**

Internet

**5%**

---

**proceedings.com**

Internet

**1%**