

PAPER • OPEN ACCESS

Joint Workshop of KO2PI & 2nd International Conference on Mathematics, Science, Technology, Education, and their Applications 2016 (ICMSTEA 2016). 3-4 October 2016, Makassar, Indonesia and 10 October 2017

To cite this article: 2018 *J. Phys.: Conf. Ser.* **954** 011001

View the [article online](#) for updates and enhancements.

Related content

- [Foreword](#)
Zhuang Qi Hu
- [Foreword](#)
Lord Rutherford
- [2nd International Conference on Statistics, Mathematics, Teaching, and Research 2017](#)



IOP | ebooks™

Bringing you innovative digital publishing with leading voices to create your essential collection of books in STEM research.

Start exploring the collection - download the first chapter of every title for free.

Forewords from the Chairman of Committee

Assalamu'alaykum wa Rahmatullahi wa Barakatuh

First of all, I wish to extend a warm welcome to fellow delegates from the various countries and regions. I realize that you are fully dedicated to the sessions that will follow but I do hope you will also take time to enjoy sparkling Makassar with its tropical setting, friendly people, and wonderful cuisine.

This 2nd International Conference on Mathematics, Science, Technology, Education, and Their Application 2016 is organized by the Faculty of Mathematics and Natural Sciences, Universitas Negeri Makassar to bring all experts and researches in these field sharing their important thoughts and findings. The conference will be held in two days from 3rd – 4th of October 2016 with two keynote speakers, seven invited speakers, and more than 80 parallel speakers from different backgrounds.

Let me take this opportunity, on behalf of the committee members, to express my gratitude and sincere thanks to the keynote, invited and all parallel speakers for spending their valuable time with us in this conference. I do hope that your time in Makassar will be valuable and memorable.

Finally, I would like to thank all steering and organizing committee for their hard work and dedication to the success of this conference. I would like also to apologize to all of you should you find any inconvenience during this event.

Thank you very much,

Wassalamu'alaykum Warahmatullahi Wa barakatuh

Chairman of Committee,

Dr. Drs. A. Mushawwir Tayeb, M.Kes.



The 2nd ICMSTEA Speech
By The Dean of Mathematics and Natural Sciences Faculty
Universitas Negeri Makassar

Your excellency Rector of Universitas Negeri Makassar
Honorable Vice Rectors and Dean of All Faculties
Honorable Keynote Speakers
Distinguished all invited speakers from outstanding universities
Distinguished all speakers and guests
All participants,
Ladies & Gentlement,

Assalamu'alaykum Warahmatullahi Wabarakatuh. My greetings for all of you. May peace and God's blessing be upon us all. *Alhamdulillah*, all praises be to the Almighty God, Allah *subhanahu wata'ala*.

It is my pleasure to welcome you all to the opening of The 2nd International Conference on Mathematics, Science, Technology, Education & their Applications (2nd ICMSTEA). I am delighted to see that the Mathematics and Natural Science Faculty has again organized the second conference that capitalize on our strength and built on our commitment to promoting Mathematics, Science, Technology and Education.

I do hope that this conference would bring a great opportunity for all of us to strengthen our contribution to the advancement of our nation.

I would like to take this opportunity to thank the conference organizing committee for their diligent work. I would also like to thank participants, especially those of you coming from abroad, for joining us and sharing your valuable experiences. Should you find any inconveniences and shortcomings, please accept our sincere apologies.

Finally, let me wish you fruitful discussion and a very pleasant stay in Makassar.

Thank you,
Wassalamu'alaykum Warahmatullahi Wabarakatuh

Dean of Faculty of Mathematics and Natural Sciences
Universitas Negeri Makassar

Prof. Dr. Abdul Rahman, M.Pd.

Theme:

“The Role of Mathematics, Sciences, Technology, and Education towards ASEAN Economic Community and Global Challenges”.

Speakers:

Professor Valerio Sbordoni, Ph.D.
Zoology dan Evolutionary Biology
University of Rome Tor Vergata, Italy

Associate Professor Mohd. Ekhwan Toriman, Ph.D.
Development and Environment Studies
Universitas Kebangsaan Malaysia

Professor Fahrul Zaman bin Huyop, B.Sc., M.Sc., Ph.D
Biochemistry and Biotechnology
Universitas Teknologi Malaysia

Prof. Alfred Edward Szmidt, Ph.D.
Molecular Population Genetics and Phylogeography
Kyushu University, Japan

Sitti Maesuri Patahuddin, Ph.D.
Mathematics Education
University of Canberra Australia,
President Director Institute for Educational Development (IFED)

Professor Driss Boutat
Mathematics
Loire Valley University, France

Prof. Birgit Loch
Mathematics
Swinburne University of Technology, Australia

Pelindung	: Rektor Universitas Negeri Makassar	
Penanggungjawab	: Prof. Dr. Abdul Rahman, M.Pd.	(Dekan FMIPA)
Pengarah	: Prof. Dr. rer. nat. H. Muharram, M.Si. Dr. Muhammad Arsyad, M.T. Dr. Kaharuddin Arafah, M.Si. Prof. H. Muh. Arif Tiro, M.Pd, M.Sc, Ph.D. Dr. Hisyam Ihsan, M.Si. Drs. Suwardi Annas, M.Si, Ph.D. Dr. H. Agus Martawijaya, M.Pd. Dr. Djabdir, M.Pd. Dra. Hj. Sumiati Side, M.Si. Drs. M. Nur Zakaria Leo, M.Si.	(Ka. Prodi Statistika) (Koord. ICP) (Koord. Kersbang) (Kajur Fisika) (Kajur Matematika) (Kajur Kimia) (Kajur Geografi)

Panitia Pelaksana

Ketua	: Dr. Drs. A. Mushawwir Tayeb, M.Kes	(Kajur Biologi)
Wakil Ketua	: Drs. Subaer, M.Phil, Ph.D.	
Sekretaris	: Fajar Arwadi, S.Pd, M.Sc.	
Wakil Sekretaris	: Hartati, S.Si, M.Si, Ph.D.	
Bendahara	: Dr. A. Mu'nisa, S.Si, M.Si.	
Wakil	: T.P. Harmah, S.E.	

Seksi Kesekretariatan

Koordinator	: Rachmawati Muhtar, S.Si, M.Si, Ph.D.
Wakil Koordinator	: Dr. Helmi, M.Si.
Anggota	: Drs. H. Syahrudin, M.Pd. Ahmad Zaki, S.Si, M.Si. Jusniar, S.Pd, M.Pd. St. Fatmah Hiola, S.P., M.Si. Nani Kurnia, S.Si, M.Si. Irwan, S.Si, M.Si. Herman, S.Pd, M.Pd. Kamaruddin, S.Sos, M.Si. Sitti Rahma Yunus, S.Pd, M.Pd. Husain, S.Si, M.Pd. Ahmad Fudhail Majid, S.Pd, M.Si.

Seksi Acara

Koordinator	: Dr. A. Asmawati Azis, M.Si.
Wakil Koordinator	: Drs. Abd. Haris Bakri, M.Si.
Anggota	: Pariabti Palloan, S.Si, MT. Dr. Ir. Hj. Rosdiana Ngitung, M.P. Dr. Hasri, M.Si. Rosmini Maru, S.Pd, M.Si, Ph.D. Sitti Busyrah Muchsin, S.Pd, M.Pd. Syahrullah Asyari, S.Pd, M.Pd. Hj. Muliana, SE, M.Pd. Drs. Haksani, M.Pd.

Seksi Perlengkapan

Koordinator : Dr. Awi Dassa, M.S.
Wakil Koordinator : Dr. Muhiddin P, M.Pd.
Anggota : Dr. Alimuddin Ali., M.Si.
Sukarna, S.Pd, M.Si.
Drs. Ibrahim, M.Si.
Faisal, S.Pd, M.Pd.
Sawiah, SE.
Syamsuddin Mas'ud
Hardin, S.Si, S.Pd, M.Pd.

Seksi Publikasi dan Dokumentasi

Koordinator : Dr. Adnan BG, M.S.
Wakil Koordinator : Dr. Ahmad Yani, M.Si.
Anggota : Nasrul Ihsan, S.Si., M.Si.
Ansari Saleh Ahmar, S.Si, M.Sc.
A. Rahmat Saleh, S.Pd, M.Pd.
Andi Irma Suryani, S.Pd, M.Si.
Jafaruddin, S.Pd, M.Pd.
Andi Irhamsyah, S.Si, M.Si.

Seksi Konsumsi

Koordinator : Dr. Ir. Hilda Karim, M.Si.
Wakil Koordinator : Dr. Bunga Dara Amin, M.Ed.
Anggota : Dr. Ernawati Sjahruddin Kaseng, S.Pi, M.Si.
Dra. Syamsiah, M.Si.
Dra. Nurhayati, M.Si.
Nurlina, SH.

Tim Reviewer

Koordinator : Prof. Oslan Jumadi, S.Si, M.Phil, Ph.D.
Wakil Koordinator : Muh. Abdy, S.Si, M.Si, Ph.D.
Anggota : Prof. Dr. Jasruddin M, M.Si.
Prof. Muris, M.Si, Ph.D.
Prof. Dr. Ir. Yusmina Hala, M.Si.
Prof. Dr. Usman Mulbar, M.Pd.
Prof. Dr. Muh. Danial, M.Pd.

Tim Penyunting

Koordinator : Dr. Syafruddin Side, M.Si.
Wakil Koordinator : Dr. Ir. Wiharto Caronge, M.Si.
Anggota : Uca, S.Si, M.P., Ph.D.
Iwan Dini, S.Si, M.Si.
Hartono, S.Si, S.Pd, M.Biotech.
Bustang, S.Pd, M.Sc.
Prasetyo, S.Pd.
Muh. Husnul Khuluq, S..Pd., M.Sc.
Said Fachry Assagaf, S.Pd, M.Sc.
Sahlan Sidjara, S.Si, M.Sc.

PAPER • OPEN ACCESS

Adsorption of Cd(II) Metal Ion on Adsorbent beads from Biomass *Saccharomyces cereviceae* - Chitosan

To cite this article: Hasri and Mudasir 2018 *J. Phys.: Conf. Ser.* **954** 012020

View the [article online](#) for updates and enhancements.

Adsorption of Cd(II) Metal Ion on Adsorbent beads from Biomass *Saccharomyces cereviceae* - Chitosan

Hasri¹ & Mudasir²

¹Department of Chemistry, Faculty of Mathematics and Natural Sciences, Universitas Negeri Makassar, Parangtambung, Makassar, Indonesia

²Department of Chemistry, Faculty of Mathematics and Natural Sciences, Universitas Gadjah Mada, Sekip Utara, Yogyakarta, Indonesia, 55281

hasriu@unm.ac.id

Abstract. The adsorbent beads that was preparation from *Saccharomyces cereviceae* culture strain FN CC 3012 and shrimp shells waste and its application for adsorption of Cd (II) metal ion has been studied. The study start with combination of *Saccharomyces cereviceae* biomass to chitosan (Sc-Chi), contact time, pH of solution and initial concentration of cations. Total Cd(II) metal ion adsorbed was calculated from the difference of metal ion concentration before and after adsorption by AAS. The results showed that optimum condition for adsorption of Cd(II) ions by Sc-Chi beads was achieved with solution pH of 4, contact time of 60 minutes and initial concentration adsorption 100mg/L. The hydroxyl (-OH) and amino (-NH₂) functional groups were believed to be responsible for the adsorption of Cd(II) ions.

1. Introduction

Decreased levels of heavy metal waste, especially waste of waters have become a serious concern of various parties. In line with the several methods have been made in reducing the presence of heavy metals such as waste reduction methods, precipitation, ion exchange method, coagulation, solvent extraction, reverse osmosis, adsorption or in combination with other [1][2]. However, the adsorption method is simpler easily applied and cheaper in terms of cost.

Adsorption methods made from natural materials, is now experiencing rapid development especially materials focused on material that has a high affinity, selectivity and ability to absorb metal cations in particular [3].

One of promising adsorbent material is using microorganisms as adsorbent. The use of microorganisms is very promising considering both living and dead microorganisms has the ability to accumulate metals, because the cell wall composed of polysaccharides, lipids and protein which is carboxylic group, hydroxyl, sulfhydryl, phosphates and amino acids that able to binding metal ions [4]-[8].

On the other side, the selection matrix of chitosan as a supporter of microorganisms, additionally the chitosan resources that abundant especially on crab and shrimp waste, non-toxic and the results showed that the chitosan has active sites such as OH, NH₂ and -NHCO-, this group can form chelates with metal cations.

Microorganisms such as *S. cereviceae* as adsorbent has higher surface area that is suitable for absorption of cations [9]. In addition, biomass *S. cereviceae*, either dry (dead) and dead have the same



ability and easily decomposed. Technically biomass very difficult to used repeatedly for low mechanical strength. Therefore, it needs to be modified to overcome the shortage of biomass. Through the combination with chitosan, it is possible to improve the mechanical properties, chemical properties, increasing the porosity and the application can increase the ability to absorb metal cations [10]. The combination of both active sites of the adsorbent and suitable characteristics metal ion is an important factor in progress adsorption takes place [11].

2. Methods

2.1. Materials

Shrimp shell waste (*Penaeus monodon*) was obtained from P.T. Kima, Makassar. Pure culture of *S. cereviceae* strain FN CC 3012 was a collection of Microbiology Laboratory, (PAU), Universitas Gadjah Mada, Yogyakarta. Reagents in analytical grade comprising $\text{Cd}(\text{NO}_3)_2$, HCl, NaOH, CH_3COOH . Distilled water and double distilled water were acquired from the Chemistry Laboratories, UGM.

2.2. Equipments

Includes chemical glass, hot plates, analytical balance (OHAUS), Atomic Absorption Spectrometer (Perkin Elmer Model 5100 PC).

2.3. Experimental Section

2.3.1. Microorganism production. Pure culture of *S. cereviceae*. It was maintained on potato glucose agar at 30°C. To produce biomass powder, a 100 ml of potato glucose medium was inoculated in the 250 ml conical flasks with spore suspension and grown in submerged culture conditions. Biomass of mycelium harvested, by filtration from the growth medium and washed several time using doubly distilled water. The obtained biomass was dried at 60°C. Further processing, the powders 100 mesh.

2.3.2. Combination of *S. Cereviceae*. Chitosan was prepared from shrimp shell waste through deproteination followed by demineralization and deasetilation processes according to the method reported earlier (Gadd, G. M., and White, C., 1993). Amount of chitosan powder mixture of *S. cereviceae* (0,100 gram) was completely dissolved in 20 ml of 2% (w/w) acetic acid. The adsorbent Sc-Chi were stirred slowly for 30 minute, then washed with distilled water until the solution became neutral. characterized using an FTIR (Shimadzu Prestige-21), X-ray diffraction electron, EDX (Shimadzu XRD-6000). The adsorbent after combination (Sc-Chi) were dried and stored before use.

2.3.3. Preparation of Metal Stock Solution. Metal solutions were prepared by diluting 1000 mg l^{-1} of CdI_2 solution with double distilled water to make concentration range from 10 to 200 mg l^{-1} . Each solution, the initial Cd(II) concentration and the concentration in the samples after adsorption experiment were determined using an atomic absorption spectrometer.

2.3.4. Adsorption studies. Adsorption of Cd(II) ions onto Sc-Chi from aqueous solution was investigated in batch experiments. The effects of the pH, contact time, the initial concentration of Cd(II) ions, and absorption capacity were also studied.

2.3.5. Effect of pH. On the sorption rate of Sc-Chi adsorbent were investigated in the pH from 2,0 to 9,0. Using volume 10 ml of Cd(II) ions solution 100 mg l^{-1} . The pH of the solution was adjusted using 0,1M HCl and 0,1M NaOH. 0,1gram of Sc-Chi adsorbent were transferred to this medium and the reaction mixture was stirrer for 60 minute. Uptakes of Cd(II) ions were determined from the difference of Cd(II) in the initial and final solution. The Cd(II) ions concentration, the samples was analyzed using an atomic absorption spectrophotometer (AAS)

2.4. Data Analysis

The amount of metal ion adsorbed by using adsorbent obtained by using the following expression:

$$q = (C_0 - C_e)V/m \quad (1)$$

q is the amount of metal ion adsorbed onto the unit amount of the adsorbent (mgg^{-1}). C_0 and C_e are the initial and equilibrium concentration of Cd(II) ion (mg l^{-1}) after sorption, respectively. V is the volume of the adsorption medium (l) and m is the amount of the adsorbent (g).

The empirical Langmuir equation which is valid for monolayer sorption onto a completely homogeneous surface is given by equation 2:

$$q_e = q_{\max} K C_e / (1 + K C_e) \quad (2)$$

where q_e is the equilibrium metal ion concentration on the adsorbent (mgg^{-1}), C_e is the equilibrium metal ion concentration in the solution (mg l^{-1}), q_{\max} is the maximum monolayer sorption capacity of the adsorbent (mgg^{-1}), and K is the Langmuir sorption constant (l mg^{-1}) related with the free energy of sorption [8][12][13].

The Freundlich model assumes a heterogeneous adsorption surface and active sites with different energy. The equation representing Freundlich model is:

$$q_e = K_f C_e^n \quad (3)$$

Model Freundlich assumption :

where K_f is a constant relating the sorption capacity and n is an empirical parameter relating the sorption intensity, which varies with the heterogeneity of the material [14].

3. Result and Discussion

The weight ratio between the biomass *S. cereviceae* ratio on chitosan done with a variation of 0% to 100%, the highest adsorption was obtained at a ratio of 10%. The composition is an ideal composition, each functional group either chitosan or *S.cereviceae* means adsorbent Sc-Chi has been optimized in binding metal ions Cd (II).

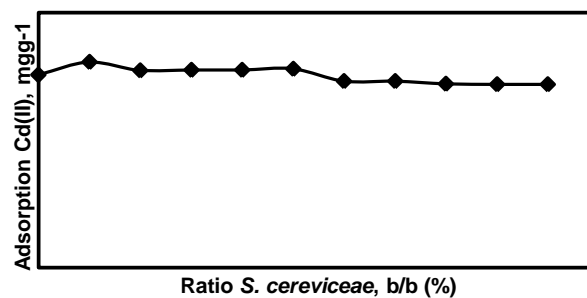


Figure 1. Ratio Chitosan with *S.cereviceae* after interaction with Cd(II) ions

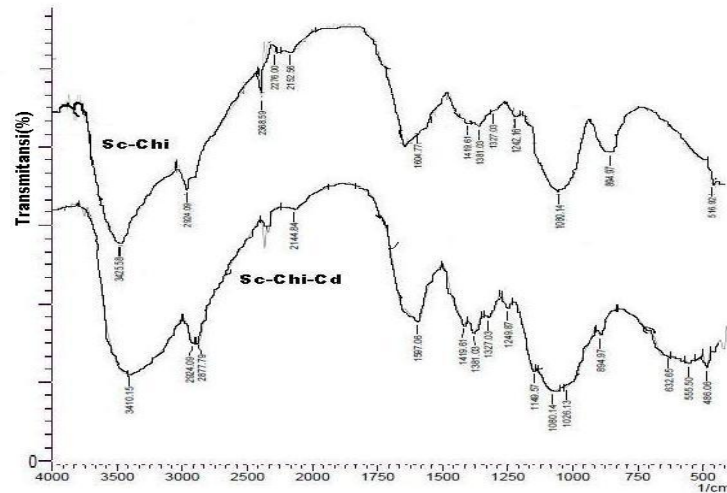


Figure 2. Infrared spectrum of adsorbent Sc-Chi before and after interaction with Cd(II) ions.

Results of FTIR spectra biomass *S. (Sc)* shows the absorption peak at 3387 cm⁻¹ as the -OH group and the -NH of polysaccharides are overlapped, the absorption peak at 1651 cm⁻¹ supported a peak at 1033 cm⁻¹ indicates the group C = O carboxylic asymmetry and stretching vibration cm⁻¹ indicates the group NH although not sharply (Figure 2). Based on the results of the identification FTIR spectra known that biomass *S.cereviceae* (Sc) has -OH groups, -COOH and -NH₂. It is supported by Gadd, G. M., 1990, states that immobilization cell support matrix for example; alginate, poliakrilamide, and chitosan has a high adsorption efficiency, although the diffusion restriction would be a problem Gadd and white, 1993; Tobin et. All., 1994). The study used by Sc-Chi adsorbent ratio of 10%. *S.cereviceae* XRD analysis results in Figure. 3 there are three peaks at 2θ = 18,9o; 19.8o and 18.5o. peak chitosan (Chi) at 2θ = 20,2o then biomass *Saccharomyces cerevisiae* (Sc) with 2θ = 18,9o, After modified, amended the form of diffraction peaks at 2θ = 19.8o crystal is a reflection of the (100). This reinforces the information that modification Sc-Chi has occurred,, the diffraction pattern is between the two adsorbents.

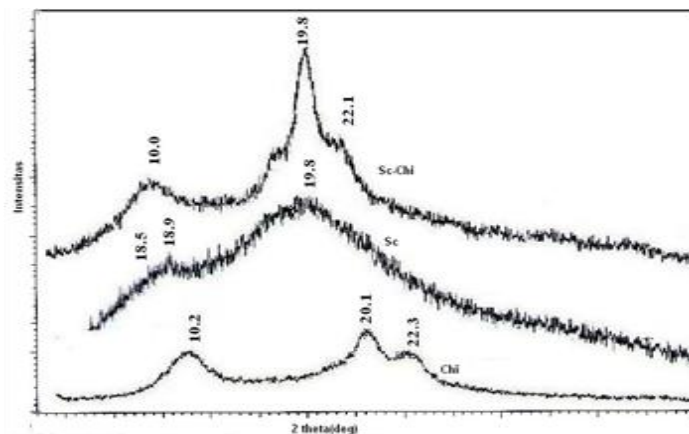


Figure 3. Diffractogram X-Ray of *S. cereviceae*, chitosan and adsorbent Sc-Chi.

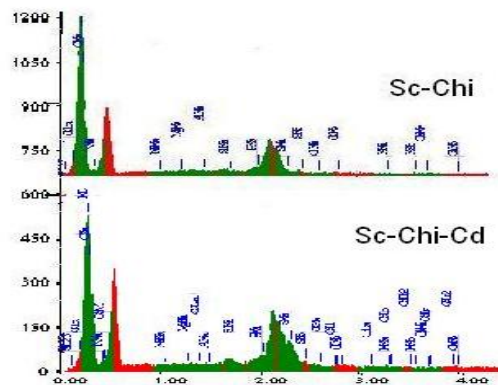


Figure 4. EDX adsorbent Sc-Chi before and after interaction with Cd(II)

The characterization results on EDX spectra (Figure 4), the adsorbent constituent elements Sc-Chi showed sharper spectra and growing constituent elements.

3.1. Effect of pH

Acidity (pH) represent important factor which have an in with metal ion adsorption process in condensation effect of active site or H⁺ ion competition of cation for binding of active site, at the same time have an effect on to metal ion interaction with active site.

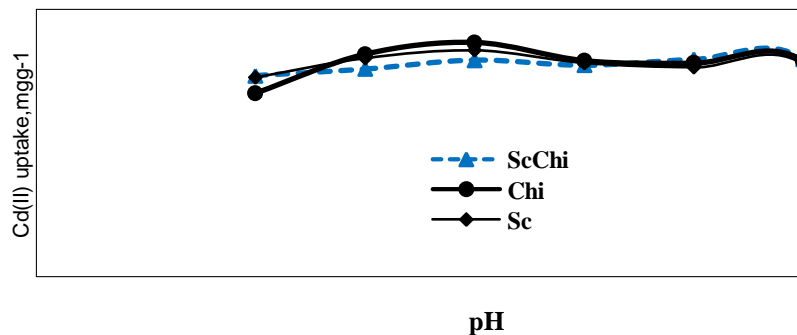


Figure 5. Effect of pH on Sc-Chi adsorbent, Cd(II) 100mgL⁻¹; sample volume of 10 ml; time contact 60 minute.

Figure 5. The sorption of Cd(II) increase as the pH increased. This is likely due to the protonation of the functional groups on the *Saccharomyces cereviceae* immobilized on chitosan structure [10]. At higher pH of 2,0, the sorption quantity increased up to pH of 6,0. At higher than 7,0, Pb(II) ions precipitated out because of high concentration of OH⁻ ions [7][8].

3.2. Effect of Contact Time

Maximum Cd(II) ions sorption with Sc-Chi adsorbent was initial period of contact time up to 60 minute. After that decreased amount of Cd(II) ions in solution

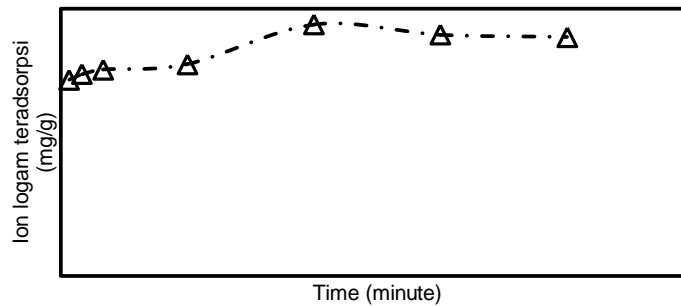


Figure 6. Effect of contact time on Sc-Chi adsorbent, Cd(II) 100mgL⁻¹; sample volume of 10 ml.

This rapid sorption stage indicate that surface sorption occur on Sc-Chi adsorbent. The extent of adsorption efficiency increases sharply with time and attains equilibrium at about 60 minute

3.3. Effect of Initial Cd(II) Ion Concentration

The sorption of Cd(II) ion Sc-Chi adsorbent was carried out at different initial Cd(II) ion concentration 10 - 200 mgL⁻¹.

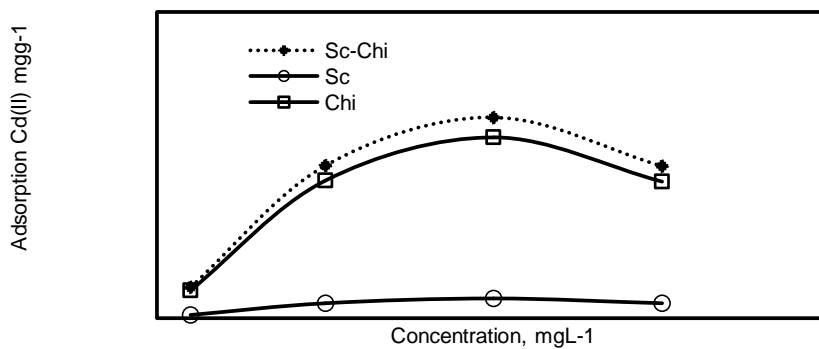


Figure 7. Effect of initial concentration on sorption of Cd(II) ions on Sc-Chi adsorbent; volume of 10 ml; time contact 60 minute.

Adsorption of Cd(II) ions was increased as the initial concentration up to 25mgL⁻¹, all Cd(II) ions present in solution could interact with binding site. Nearly 100% adsorption was observed when concentration increased from 10-25 mgL⁻¹. This could be because at higher concentration, as more ions are competing for the available binding sites [10].

Analysis in the of the isotherm data is important in order to develop an equation. Adsorption isotherm also describes how solutes interact with adsorbent and so is critical in optimizing the use of adsorbent. The lead uptake capacity of Sc-Chi adsorbent was evaluated using pseudo order-2 adsorption isotherm.

Table 1. The number of reaction rate constant (k) and the correlation coefficient (R²) metal ion adsorption kinetics model of Cd (II)

Kinetics Model	Reaction rate constant (k)	
	Sc-Chi	R ²
Orde-1	0,006 min ⁻¹	0,434

Kinetics Model	Reaction rate constant (k)	
	Sc-Chi	R ²
Orde-2	20,45 M min ⁻¹	0,356
Orde pseudo-2	0,035 g mol ⁻¹ min ⁻¹	0,995

Table. 1 shows that the pseudo-second-order more appropriate with the Sc-Chi adsorbent because forming the linear regression than model of kinetics first order and order-2, this indicates that the adsorption of metal ions Cd (II) following model of pseudo kinetics second order. The reaction rate constant of Sc-Chi adsorbent larger than before modification, the amount of adsorption rate due to the number of active group that acts on the adsorbent Sc-Chi unequal or crowding so that the reaction rate is slower than the biomass of *Saccharomyces cereviceae* Sc, but chitosan shows the adsorption rate same with an adsorbent Sc-Chi, this is likely due to the active site that play a part in adsorbing metal ions Cd (II) is not much different.

4. Conclusion

The result of research showed that optimum condition of adsorption of Cd(II) ion by Sc-Chi adsorbent with ratio of 10%, pH of solution of 7, contact time of 60 minutes and initial concentration adsorption 25mg l⁻¹. This adsorbent can be a good candidat for adsorption of not only Cd(II) ions but also other heavy metal ions in wasterwater stream.

Acknowledgement

The authors woud like thanks to Directore of Research and Community Services, Directorate General of Higher Education (DP2M-DIKTI), National Education Departement of Indonesia, for financial support of this research (Research Grant for Doctoral Program, 2009, with contract number: LPPM-UGM/1156/2009).

References

- [1] Mahajan, S. P., 2002, Pollution in Process Industries, Tata McGraw-Hill Pub. Co. Ltd., New Delhi
- [2] Kurita, K., Sannan, T., Iwakura, Y., 1998, Binding of Metal Cations, *J. Appli. Poly. Sci.*, **23**, pp. 511-515
- [3] Veglio, F, Beolchini, F and Toro I., 1998, Kinetic Modelling of Copper Biosorption by Immobilized biomass, *Ind. Eng. Chem. Res.*, **37**, pp. 1107- 1111
- [4] Darjito, Danar, P., and Siti Nasirotnun Nisa., 2006. Study On Adsorption of Cd(II) by Chitosan-Alumina, *J. Indo. Chem.*, **6**, 3, pp. 238-244.
- [5] Gadd, G. M., 1992, Microbial Control of Heavy Metal Pollution, In *Microbial Control of Polution*, Fry, J. C., Gadd, G. M., Helbert, R. A., Jones, R. W., and Watson-Craik, I.A., (eds), Society for General Microbiology Symposium, Cambridge University Press, UK., pp. 58-88
- [6] Khoo, K.M.; Ting, Y.P., 2001, Biosorption of gold by immobilized fungal biomass. *Biochem. Engin. J.*, **8**, pp.51-59
- [7] Tsezos, M., and Volesky, B., 1981, Biosorption of Uranium and Thorium, *Biotech. Bioeng.*, **23**, pp. 583-604
- [8] Volesky B.,Holan, Z.R., 1995, *Biosorption of Heavy Metals*, *Biotechnol.*,**11**, pp. 234-250
- [9] Gadd, G. M., and White, C., 1993, Microbial Treatment of Metal Pollution a Working Biotechnology, *Tibtech*, **11**, pp. 353-359
- [10] Tobin, J. M., White, C. dan gadd, G. M., 1994, Metal Accumulation by Fungi: Application in Environment Biotechnology, *J. Ind. Microbiol.*, **13**, pp. 126-130
- [11] J. acharya, et.al. 2009. *Chemical Eng. J.* **150**, pp. 25-39.
- [12] Hong, N. K., Meyer, S.P., Lee, K.S., 1989, Isolation and Properties of Humus Mineral

- Complexes, In : Interaction of Soil Mineral with Natural Organic and Microbes (P.M and M. Schnitzer, eds), *Soul Sci. Soc*, **VI**, pp. 103-108
- [13] Holan, Z.R., an Volesky, B. 1995. Accumulation of cadmium, lead, and nickel by fungal and wood biosorbents. *Appl. Bio. Chem. Biotechnol., Prog*, **11**, pp.235-250.
- [14] I. Langmuir: 1918, *J.Am.Chem.Soc.*, **40**, pp. 1361-1403